

5 6 7
JUN 2019

MEDUVIP



Dr Raphael LASSERRE, CH PAU

5 6 7
JUN 2019



M : medical

EDU : educational

VI : videos

P : patients

5 6 7
JUN 2019



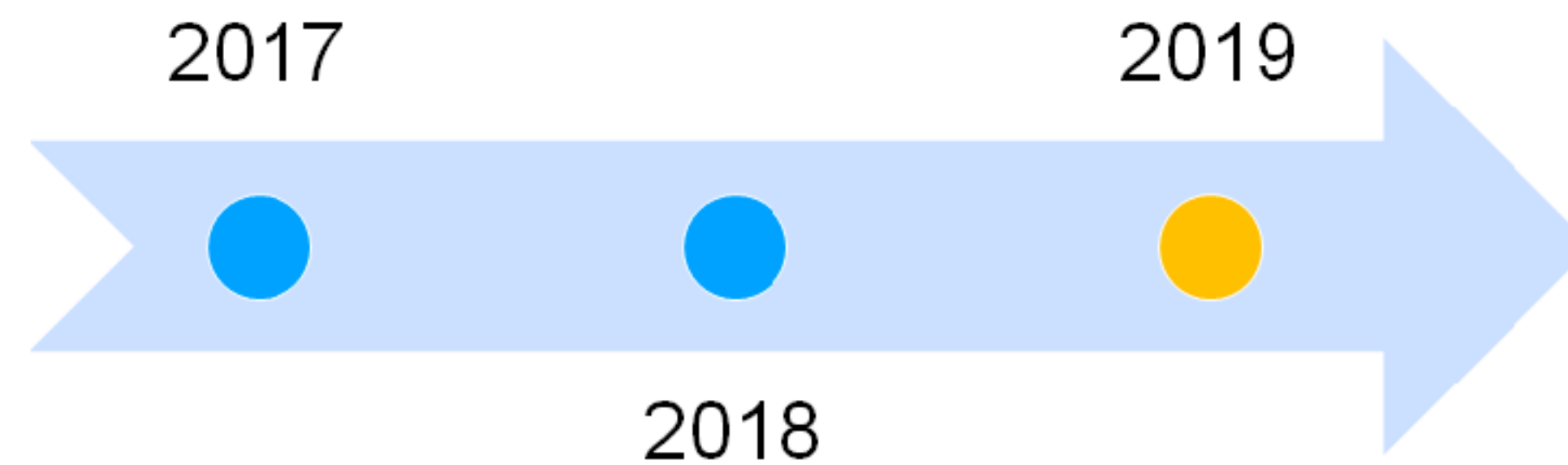
M : medical

EDU : educational

VI : videos

P : physicians

MEDUVIP => video learning



Apprenants



patients

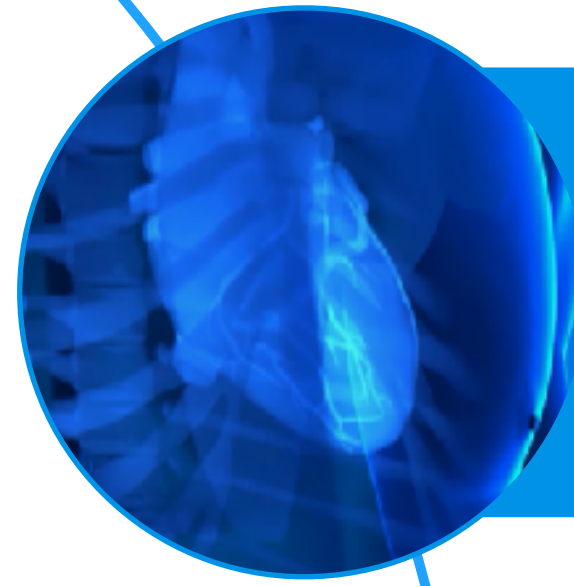
médecins

Apprenants

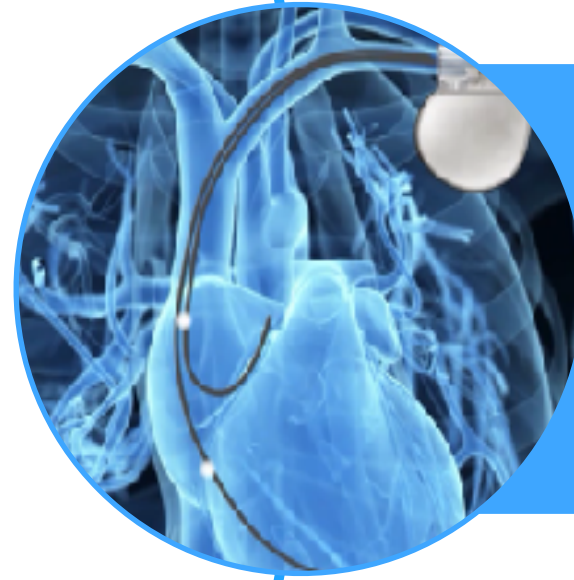


patients

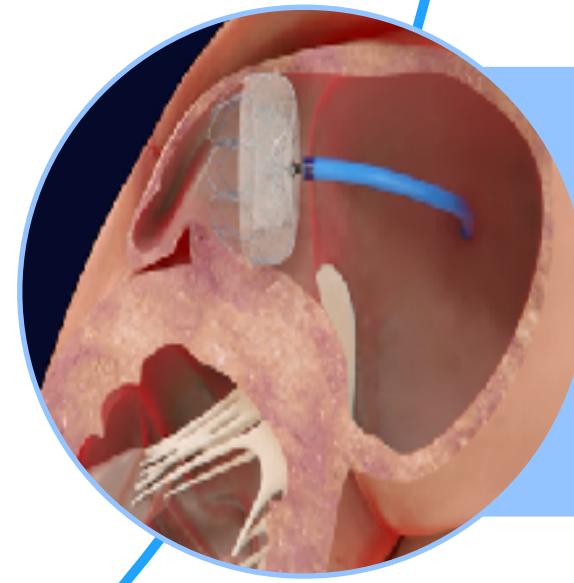
médecins



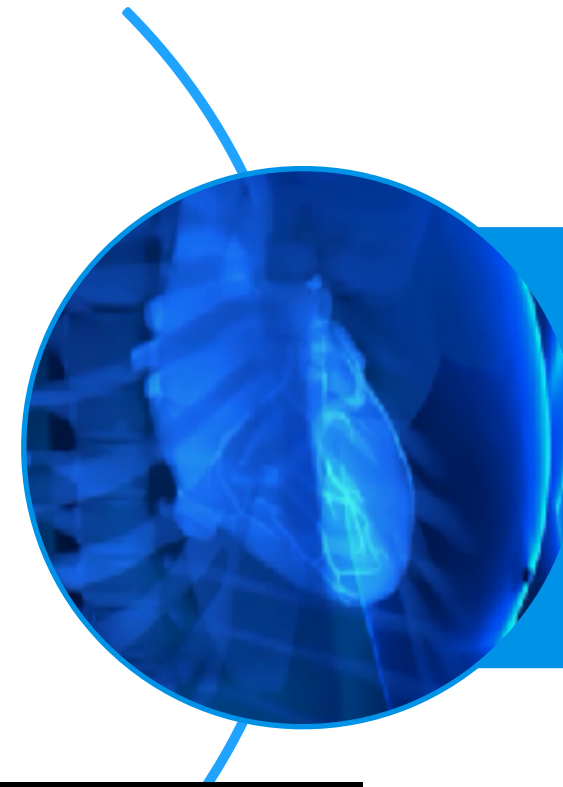
Cardio interventionnelle



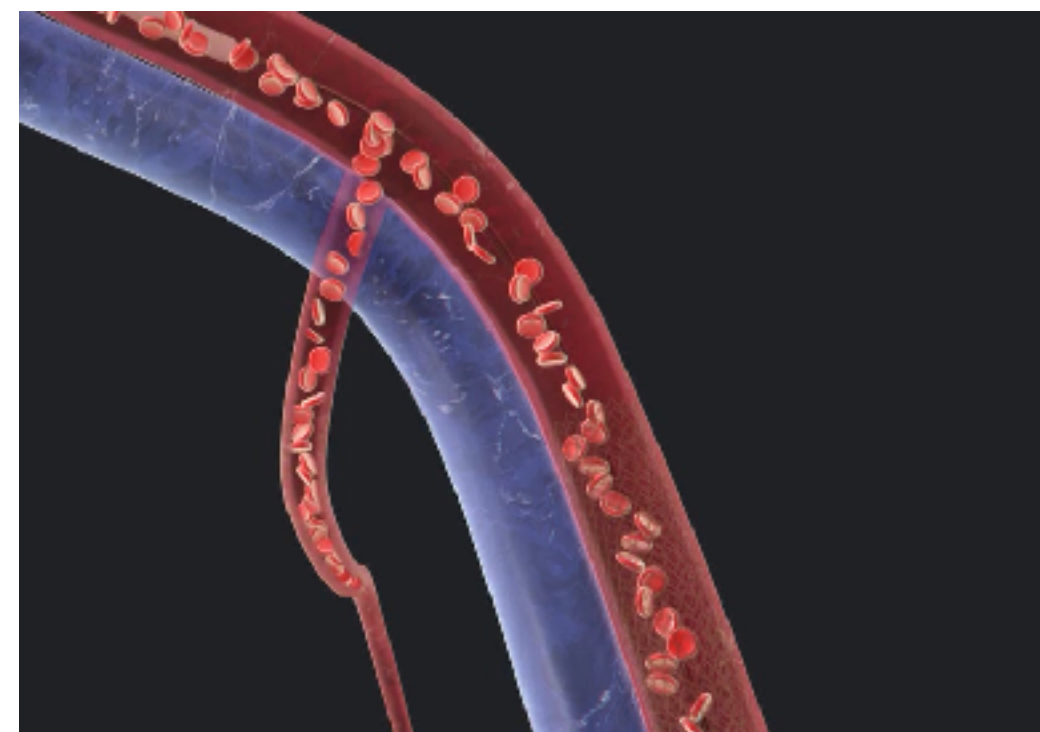
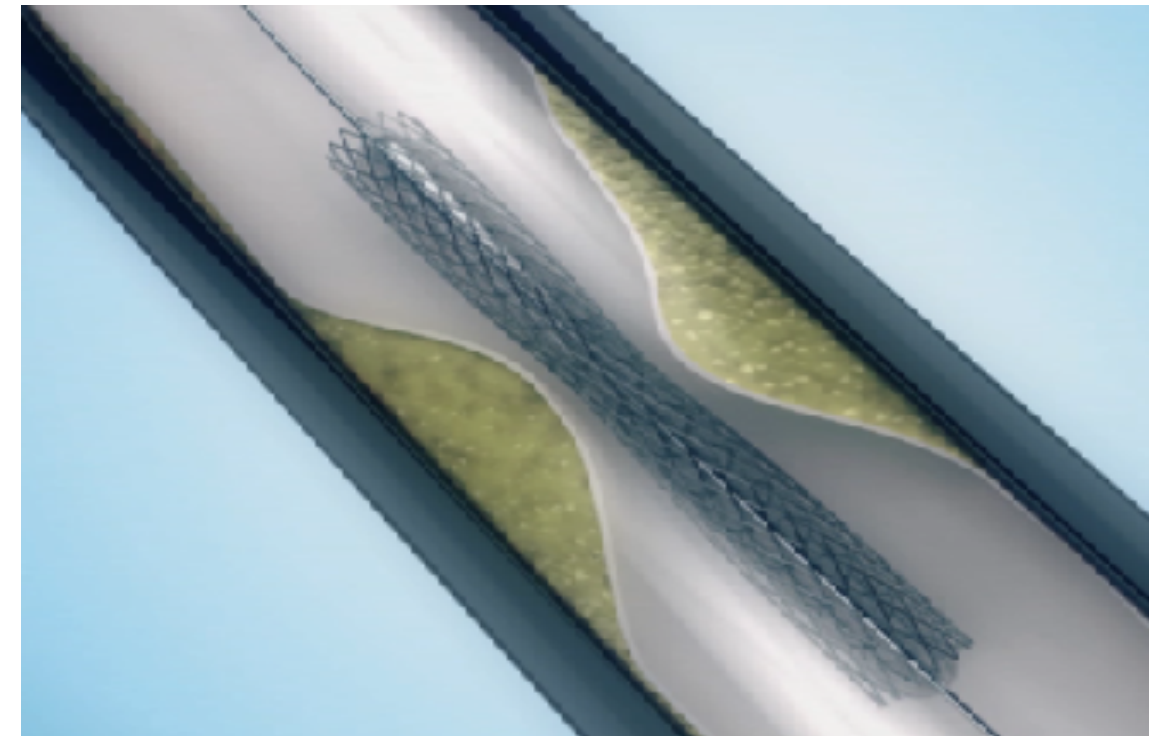
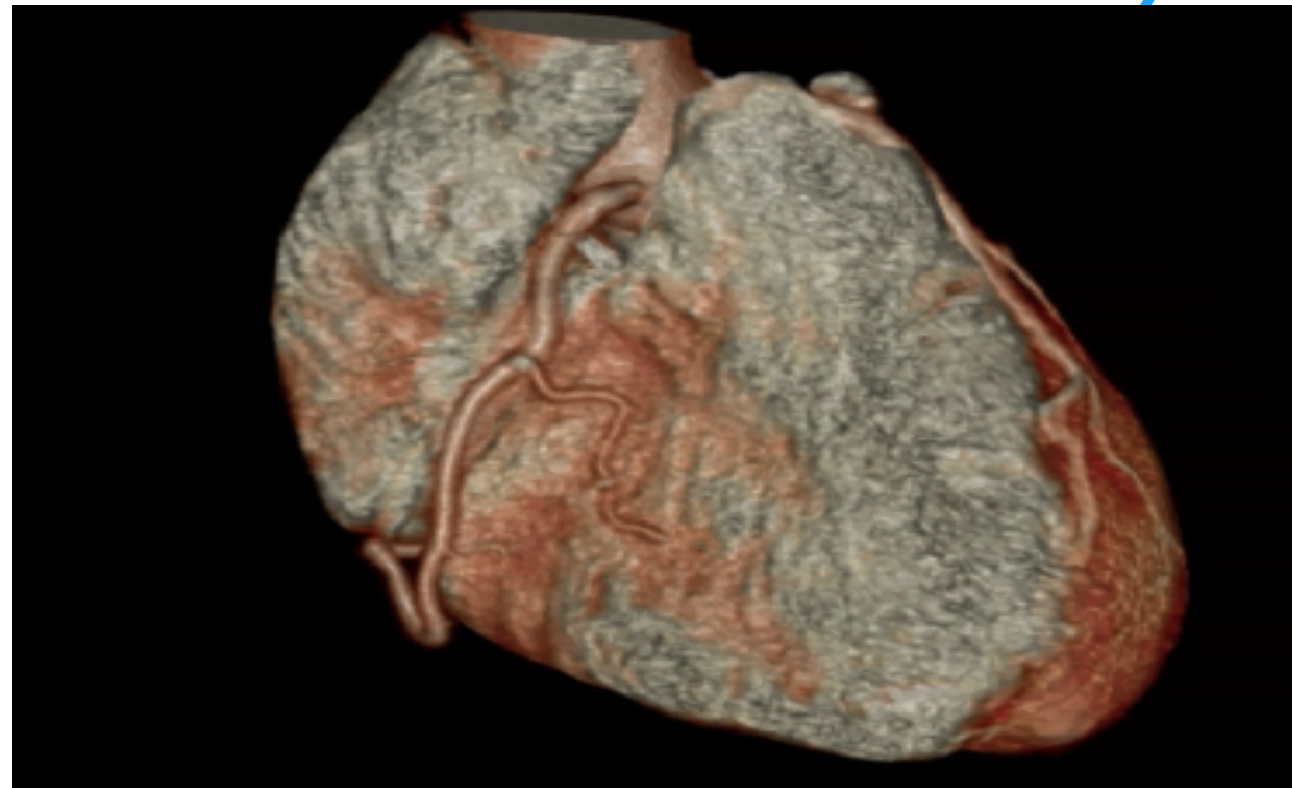
Stimulation / ablation

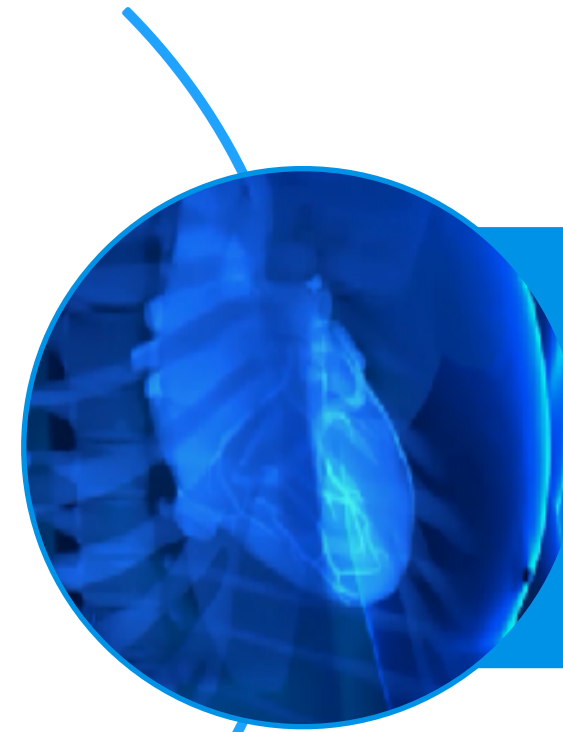


Structural



Cardio interventionnelle





Cardio interventionelle

UK

PORTUGAIS

?

WHAT IS A CORONARY ANGIOGRAPHY ?

?

WHAT ARE THE MAIN PRINCIPLES OF THIS EXAMINATION ?

?

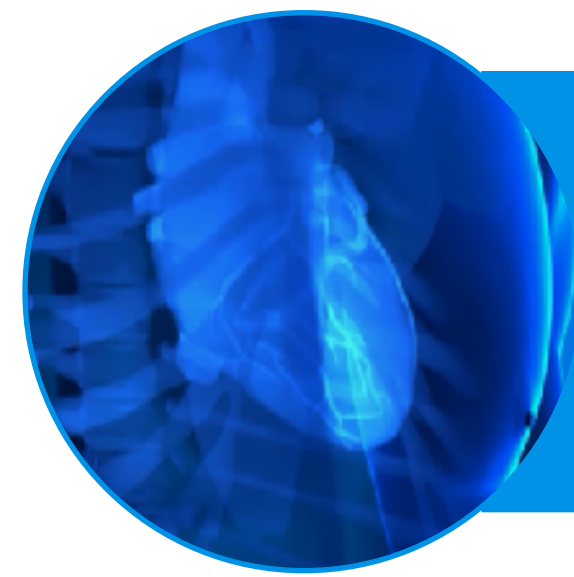
WHAT ARE THE MAIN STEPS ?

Exemplo n°1

Coronária direita com um estreitamento superior a 90%

Implantação do stent

Desaparecimento completo do estreitamento



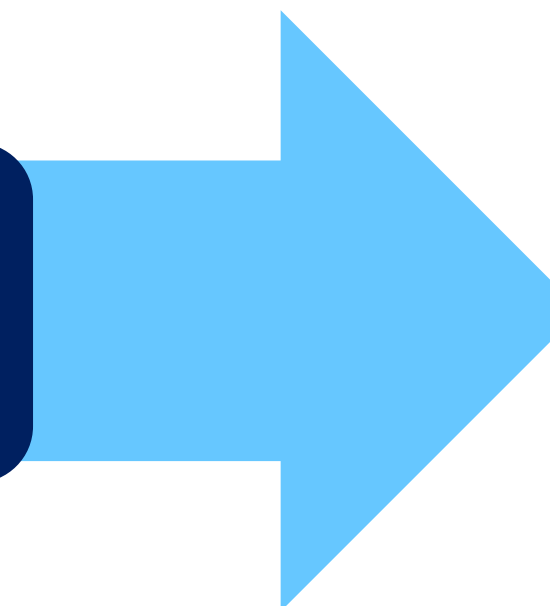
Cardio interventionnelle

22 centres



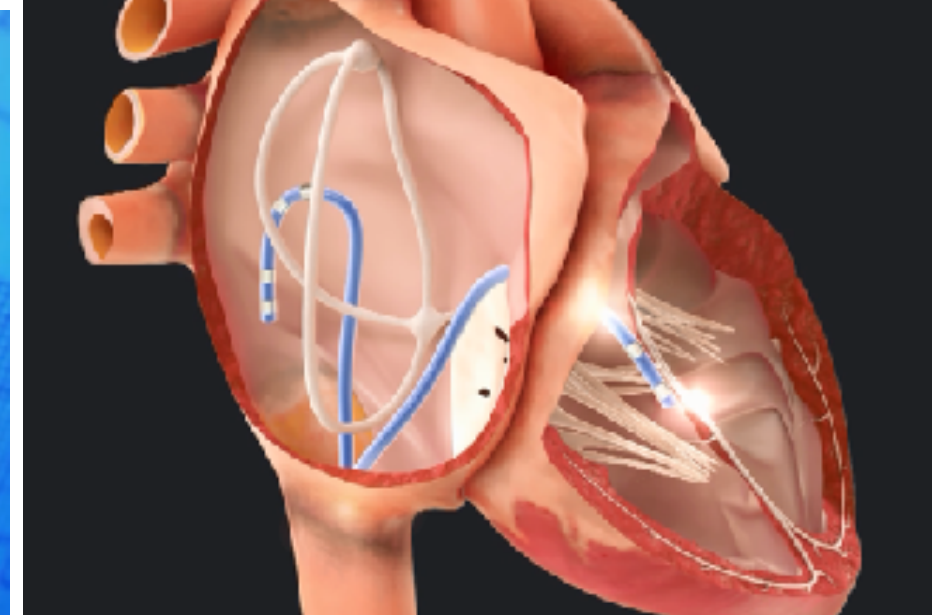
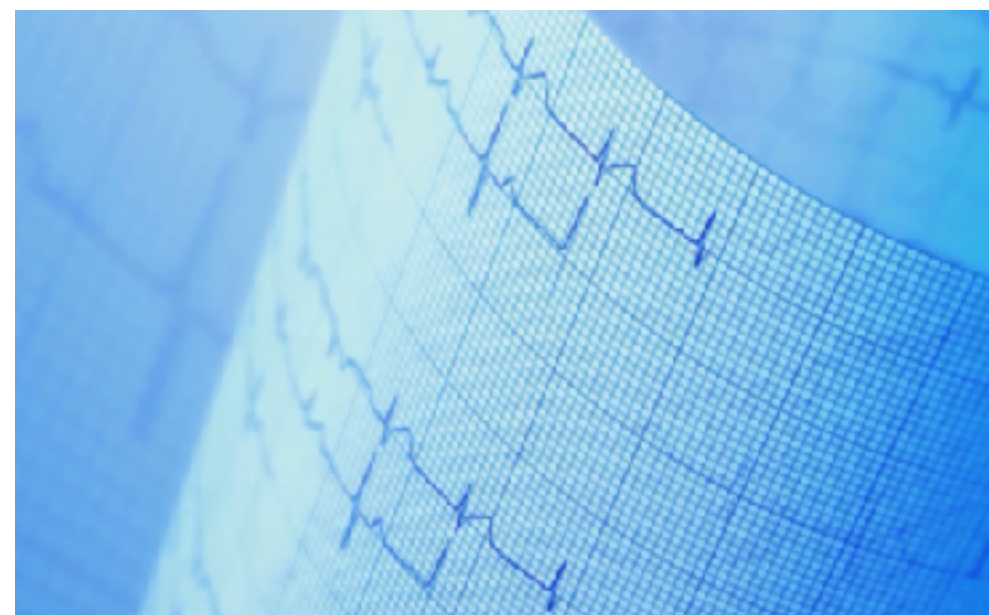
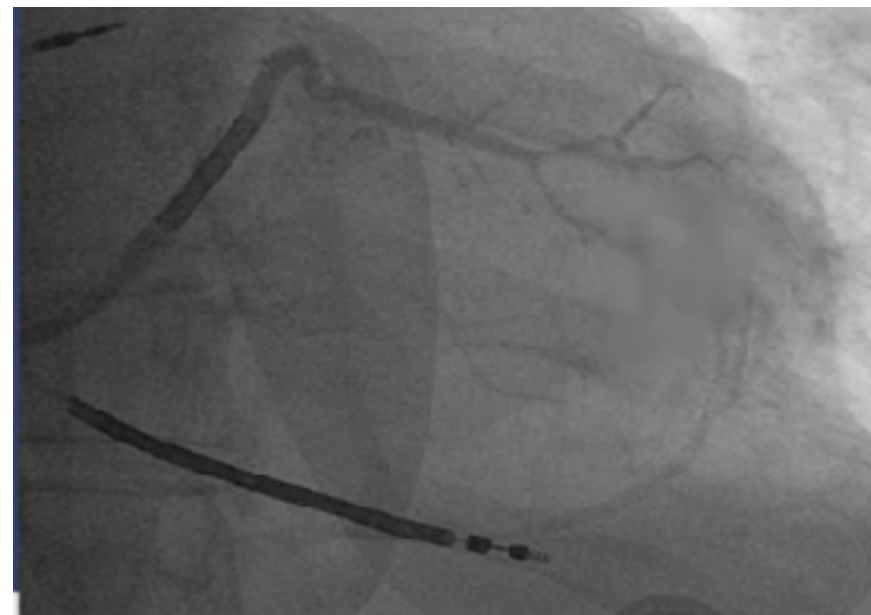
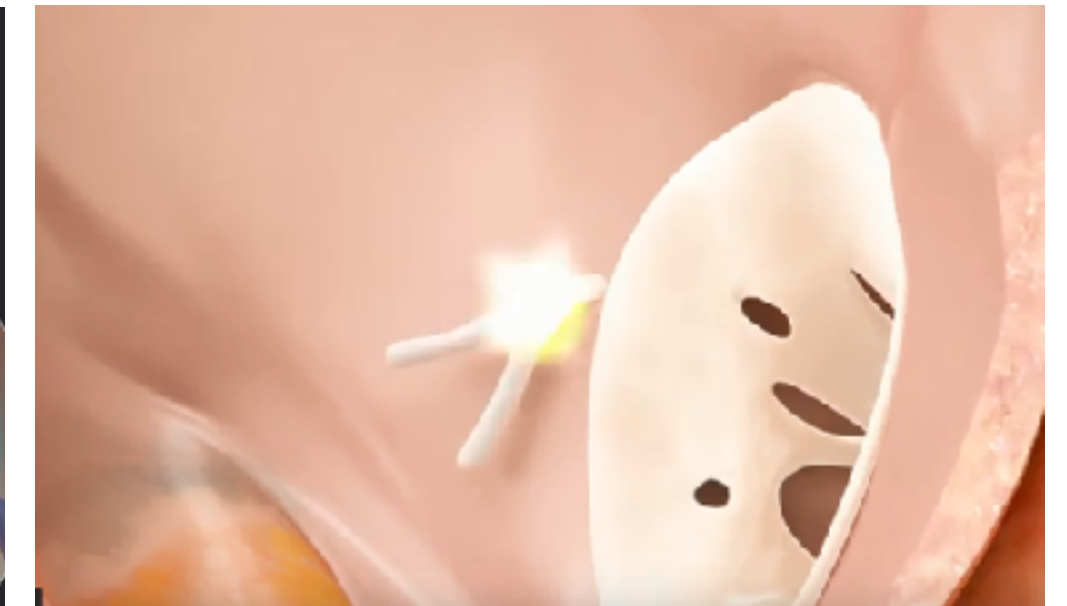
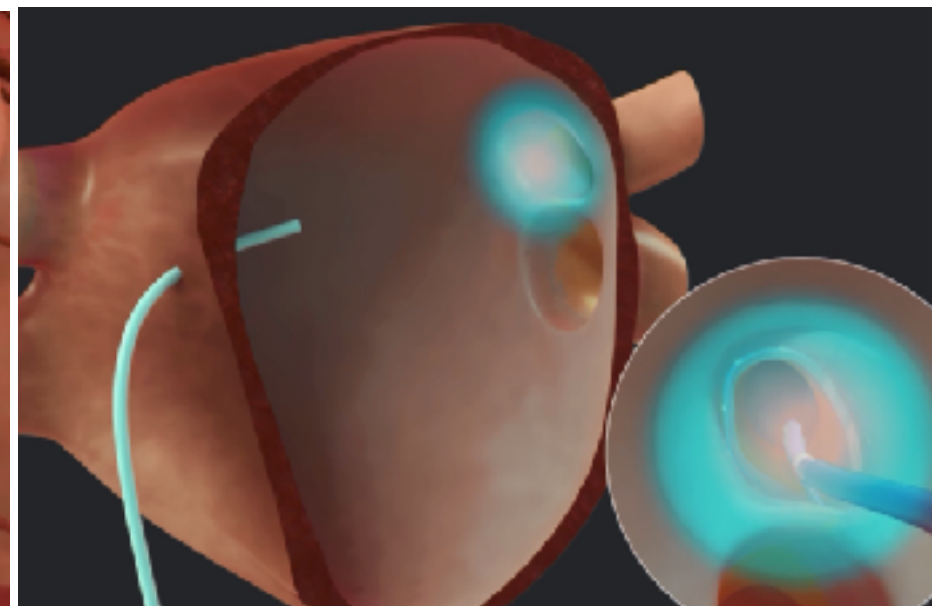
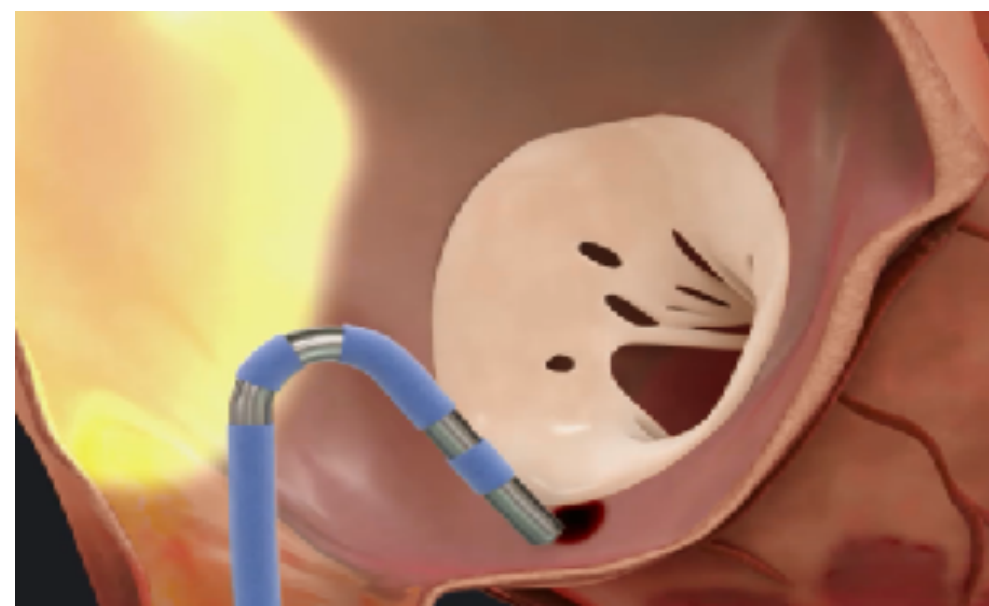
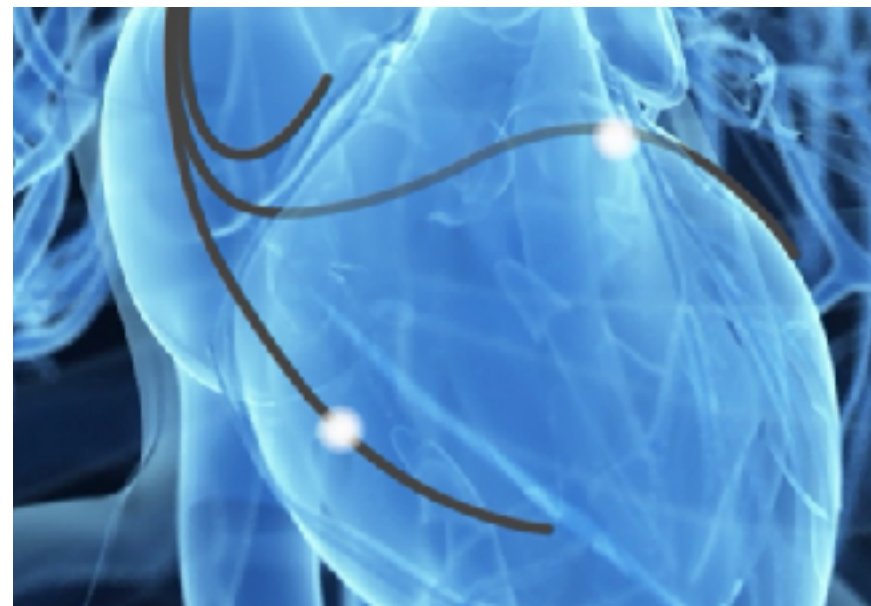
2018 :
3 centres pilotes

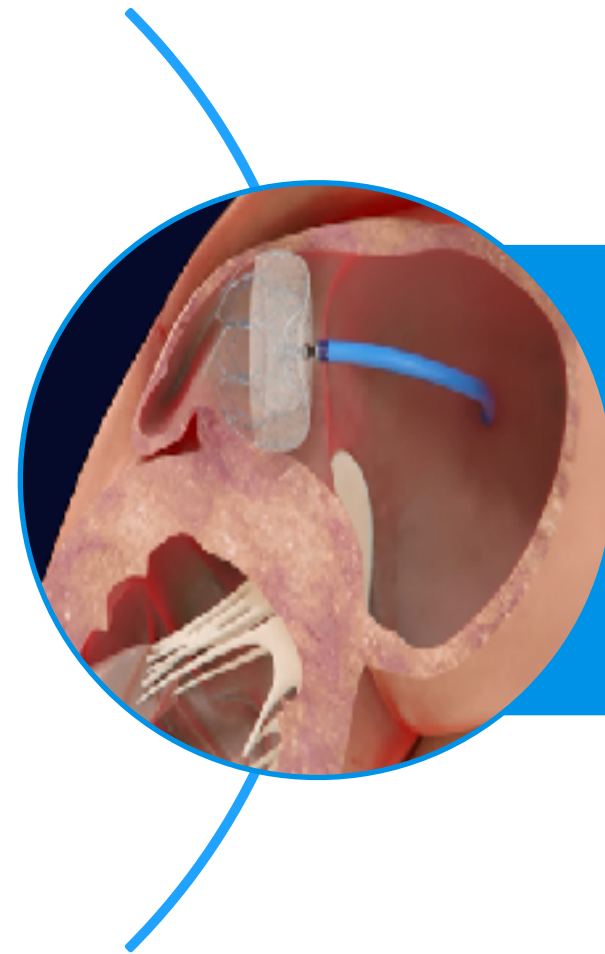
2019 :
40 centres



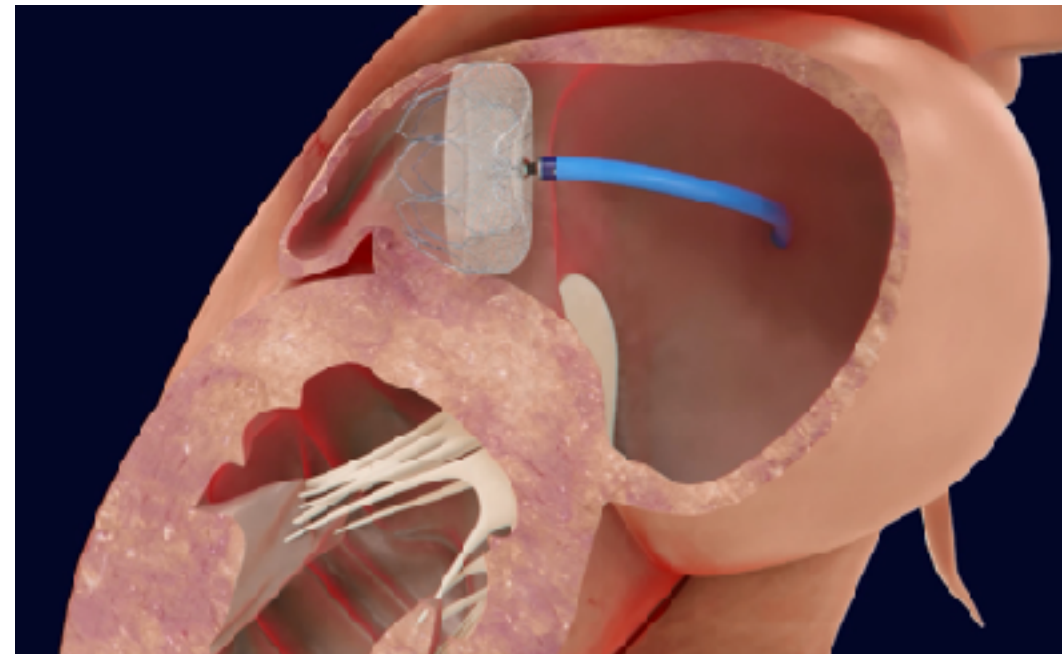


Stimulation / ablation





Structural



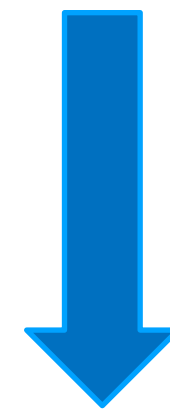
FAA



Boston
Scientific
Advancing science for life™



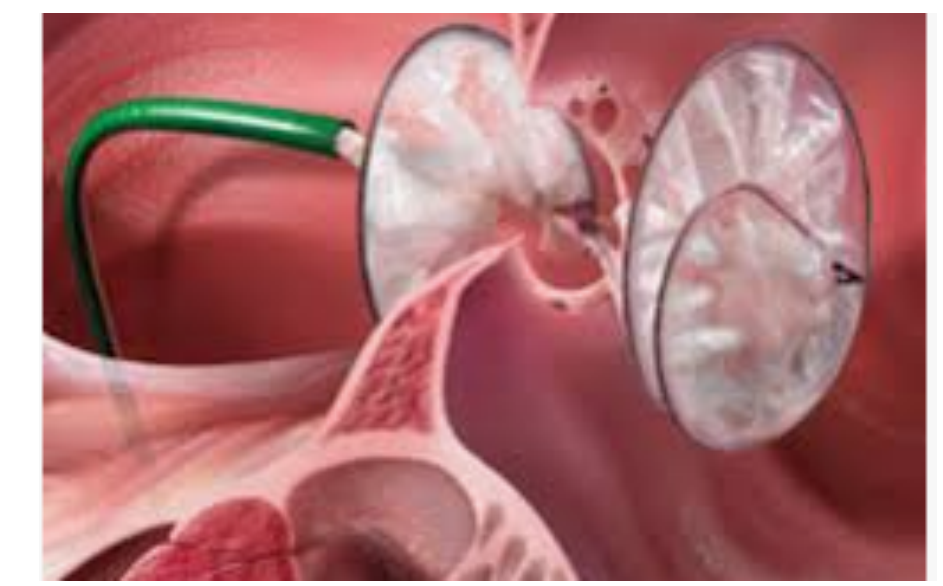
TAVI



AUTOMNE 2019



MITRACLIP



FOP/CIA

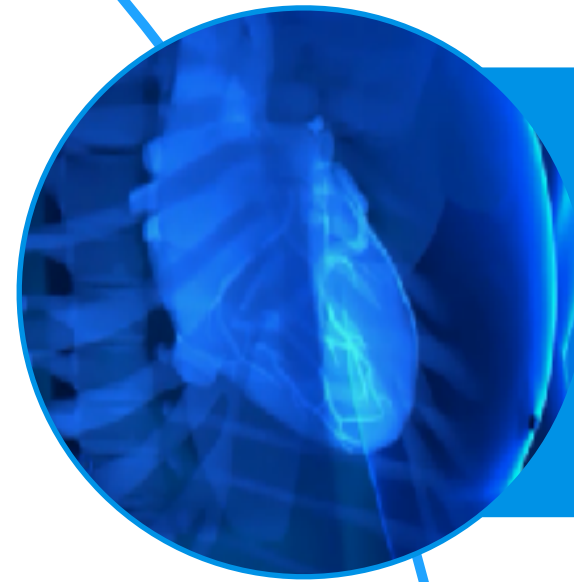
Apprenant



patients

médecins

5 6 7
JUN 2019



s and tricks Academy

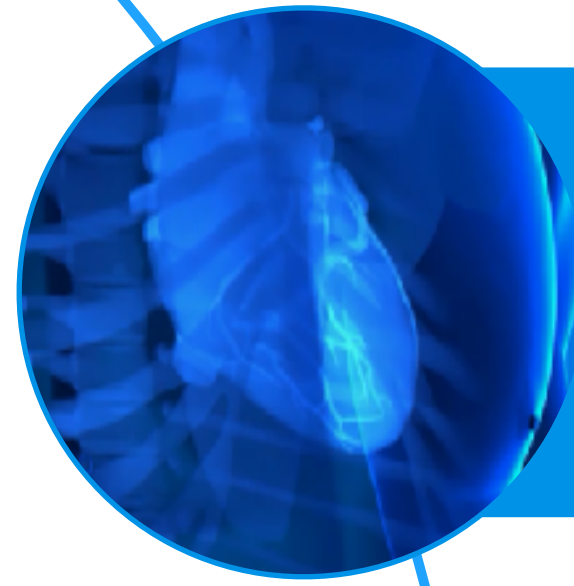


s and tricks devices CTO

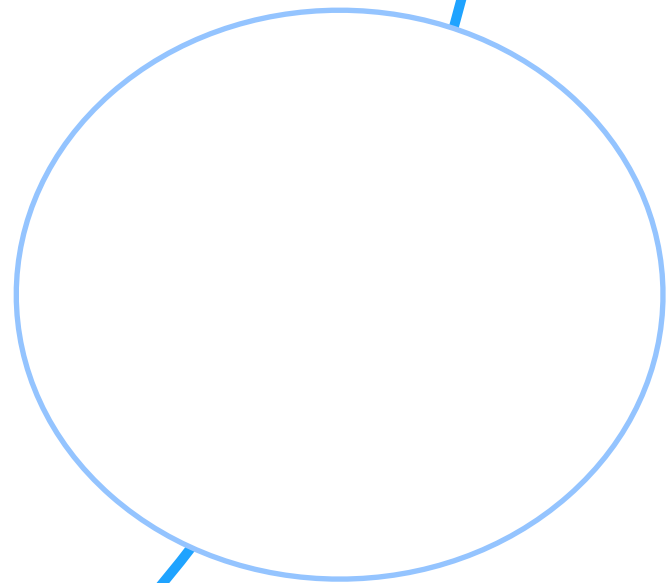
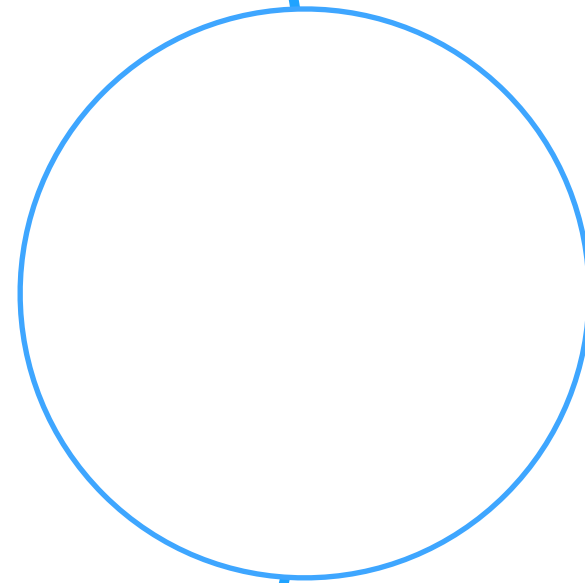


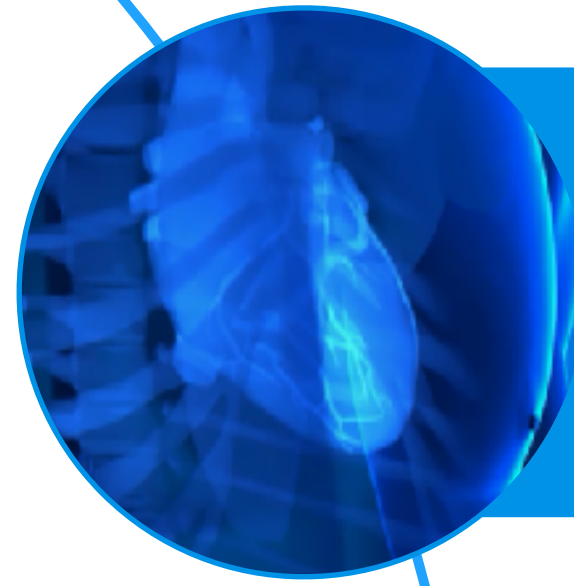
thmologie

5 6 7
JUN 2019

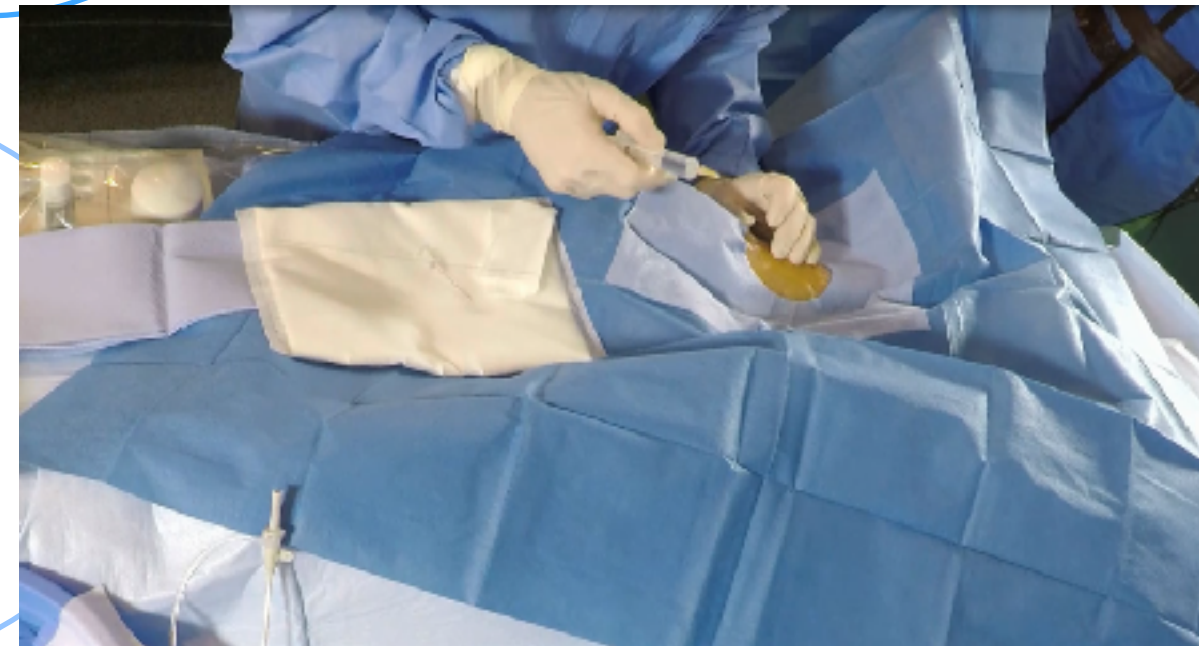
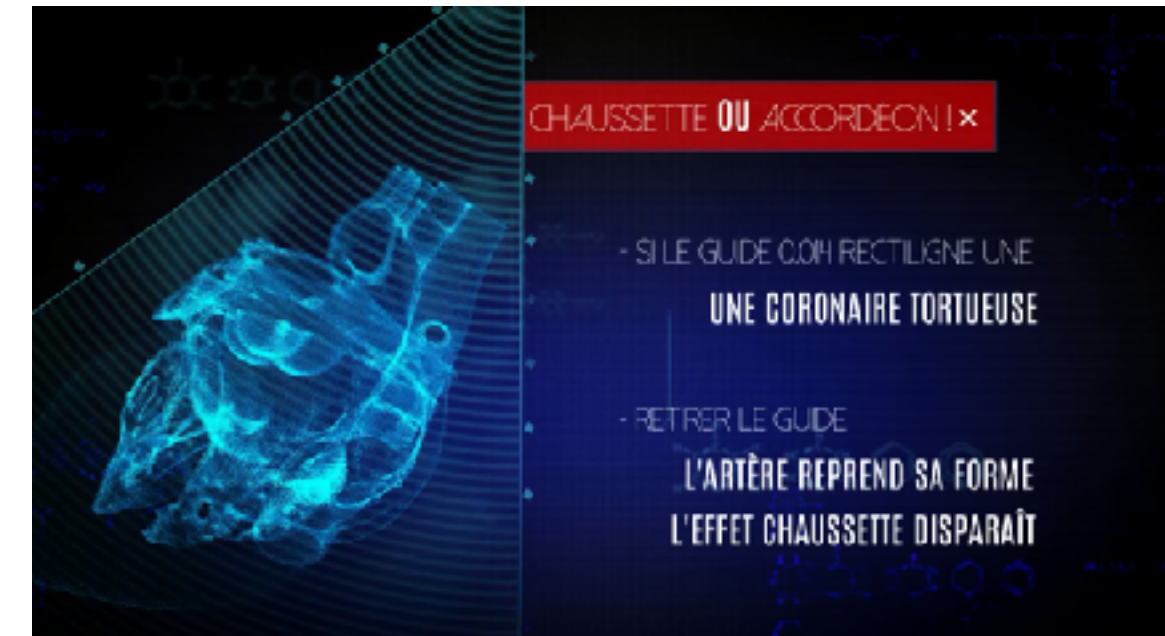
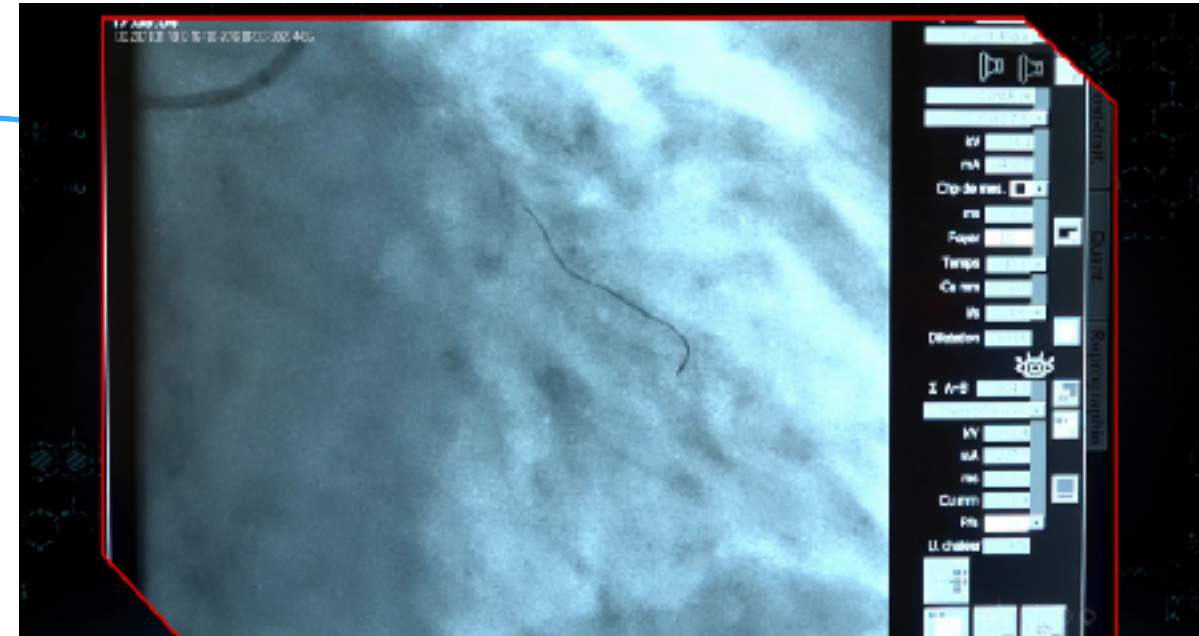


s and tricks Academy

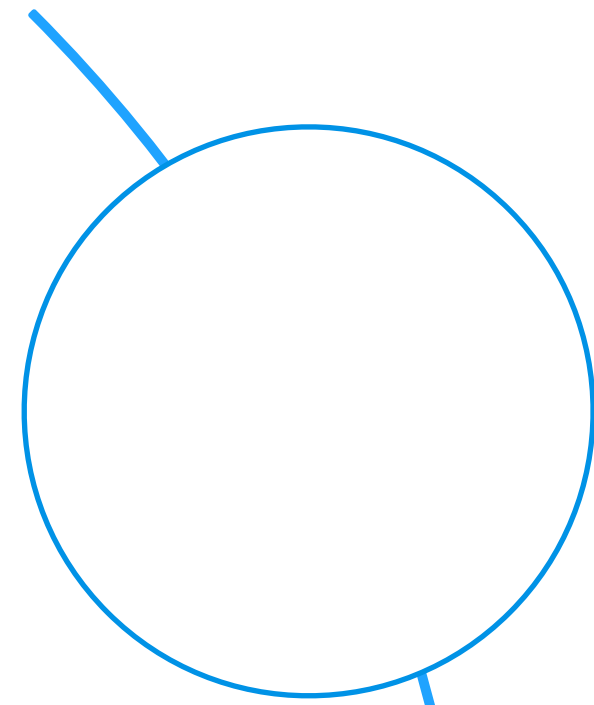




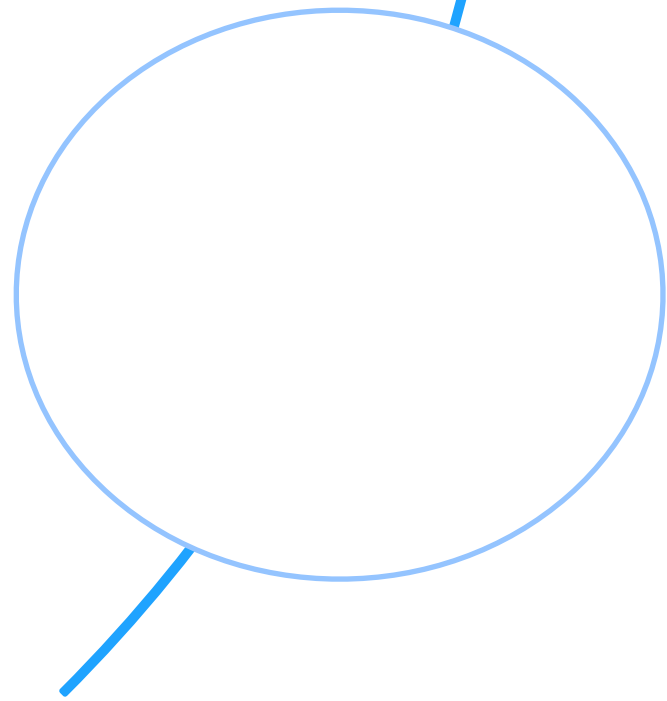
...s and tricks Academy



5 6 7
JUN 2019



s and tricks devices CTO



BIOTRONIK excellence for life
Tricks and tricks devices CTO

Le BLIMP
Ballon de diamètre **0.6mm** & Longueur **5mm**

LE TRAP IT

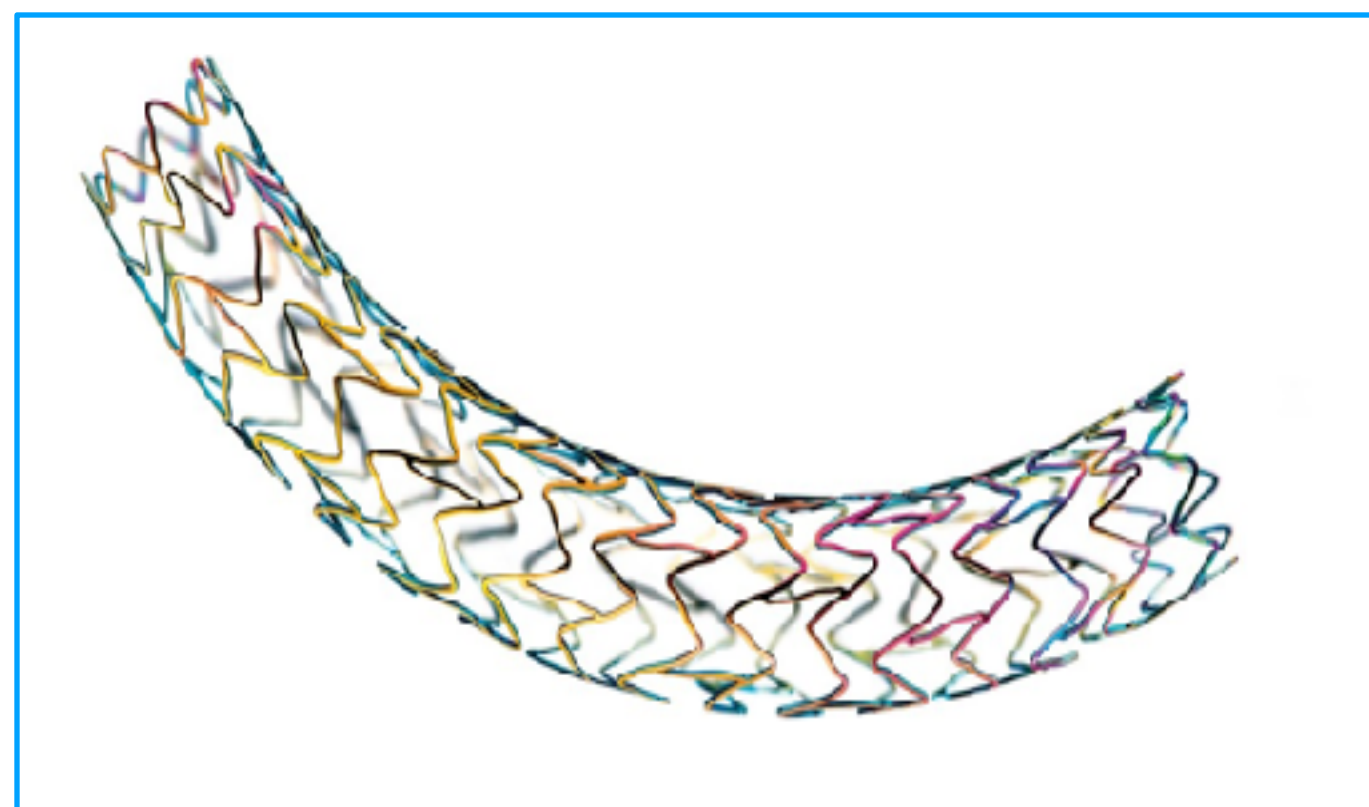
Dual lumen micro catheter NHANCER RX

Reverse wire technique
Bifurcation CTO wiring
Wiring acute angulated bifurcations
Parallel wiring technique

IMDS is exclusively distributed in France by BIOTRONIK

GUIDION RAPID EXCHANGE GUIDE EXTENSION

Flexible radiopaque a-traumatic tip
Hydrophilic coated 10 cm
Reinforced shaft
Exit markers at 95 cm and 105 cm
25 cm Rapid exchange section
Push rod
150 cm Usable length

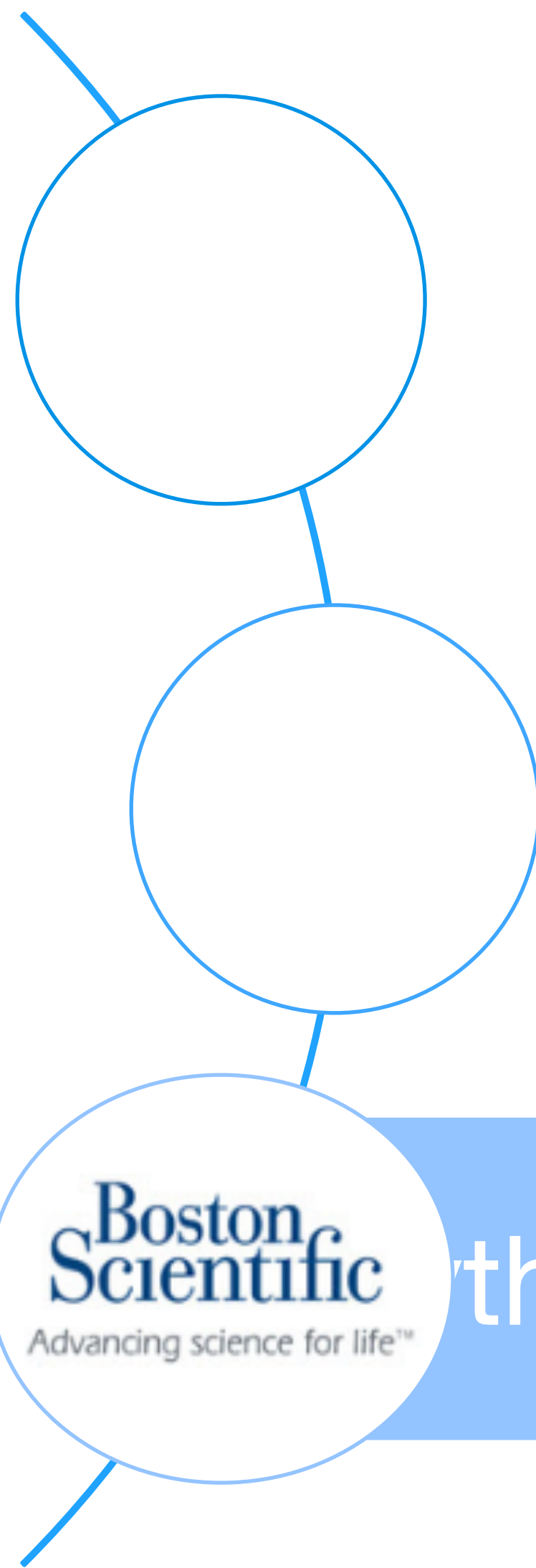


Zero-Gravity eliminates strain to the:

- Back
- Neck
- Shoulders
- Hips

ZERO-GRAVITY™

5 6 7
JUN 2019



rythmologie

Boston Scientific *Advancing science for life™* **Chmologie**

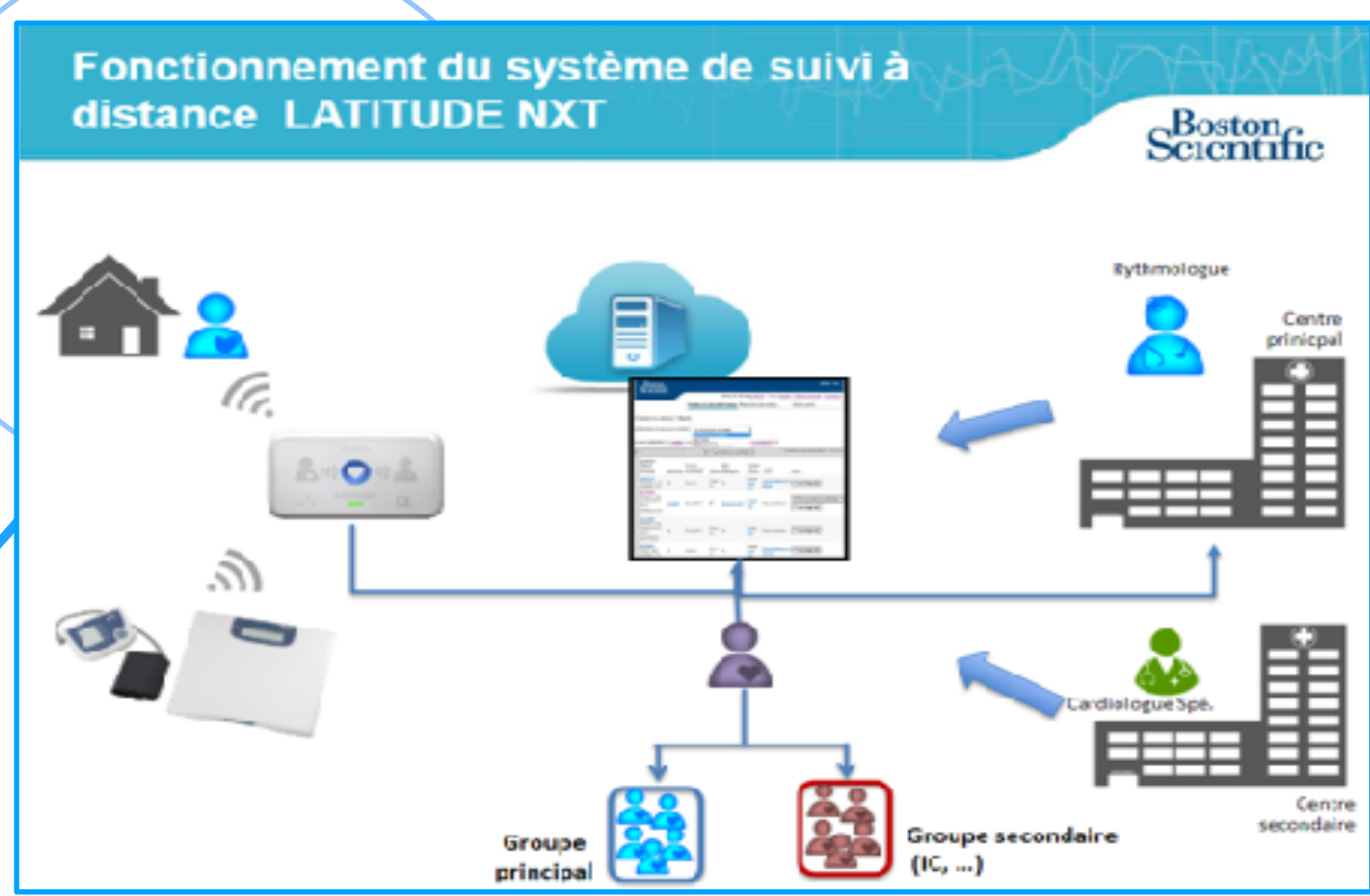
BASES THÉORIQUES

CONDUCTION INTRACARDIAQUE NORMALE (NCEUD SINUSAL - NCEUD AURICULO-VENTRICULAIRE)

Mesures électriques en temps réel

- Détection
- Impédance
- Seuil

Paramètre	Valeur	Unité	Normale
Amp. intracav.	1,1	12,2	(N.R.)
Fréquence ventriculaire	80	min ⁻¹	
Impédance de stimulation	524	Ω	(N.R.)
Seuil Atrial	0,5 V @ 0,4 ms	(N.A.)	
Seuil V	0,7 V @ 0,4 ms	(N.R.)	



5 6 7
JUIN 2019



5 6 7
JUN 2019



5 6 7
JUN 2019

Fonctionnement
du cœur

Les symptômes

1 PROFESSEUR

Le sel

L'activité
physique

10 ENFANTS



Les diurétiques

Les
médicaments





That's all Folks!

5 6 7
JUN 2019



5 6 7
JUN 2019



5 6 7
JUN 2019



5 6 7
JUN 2019



5 6 7
JUN 2019



5 6 7
JUN 2019



5 6 7
JUN 2019



