

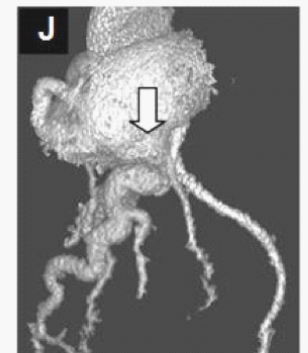
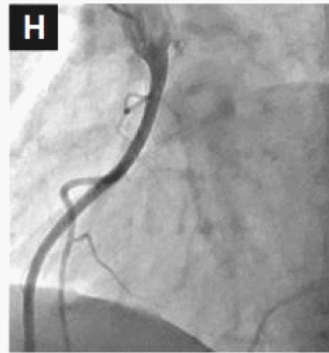
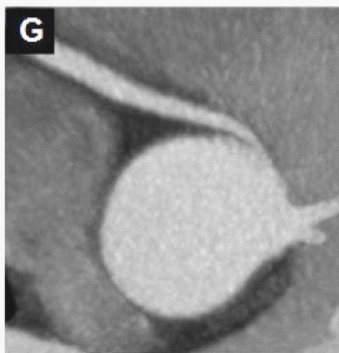
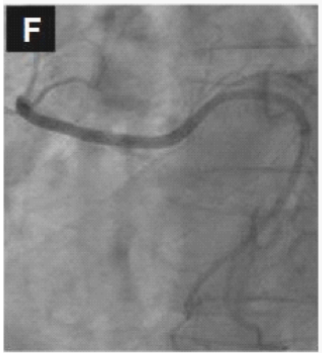
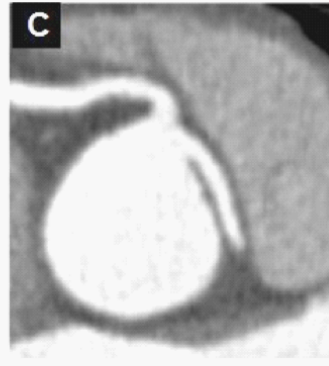
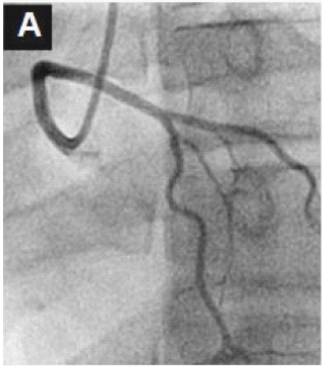
Les pièges d'une anatomie coronaire anormale

Pierre Aubry (Paris), Patrick Dupouy (Antony), Warda Ferrag (Paris),
Xavier Halna du Fretay (Aran), Fabien Hyafil (Paris), Jean-Michel Juliard (Paris),
Phalla Ou (Paris), Jean-Pierre Laissy (Paris)
pour le groupe ANOCOR

Deux situations

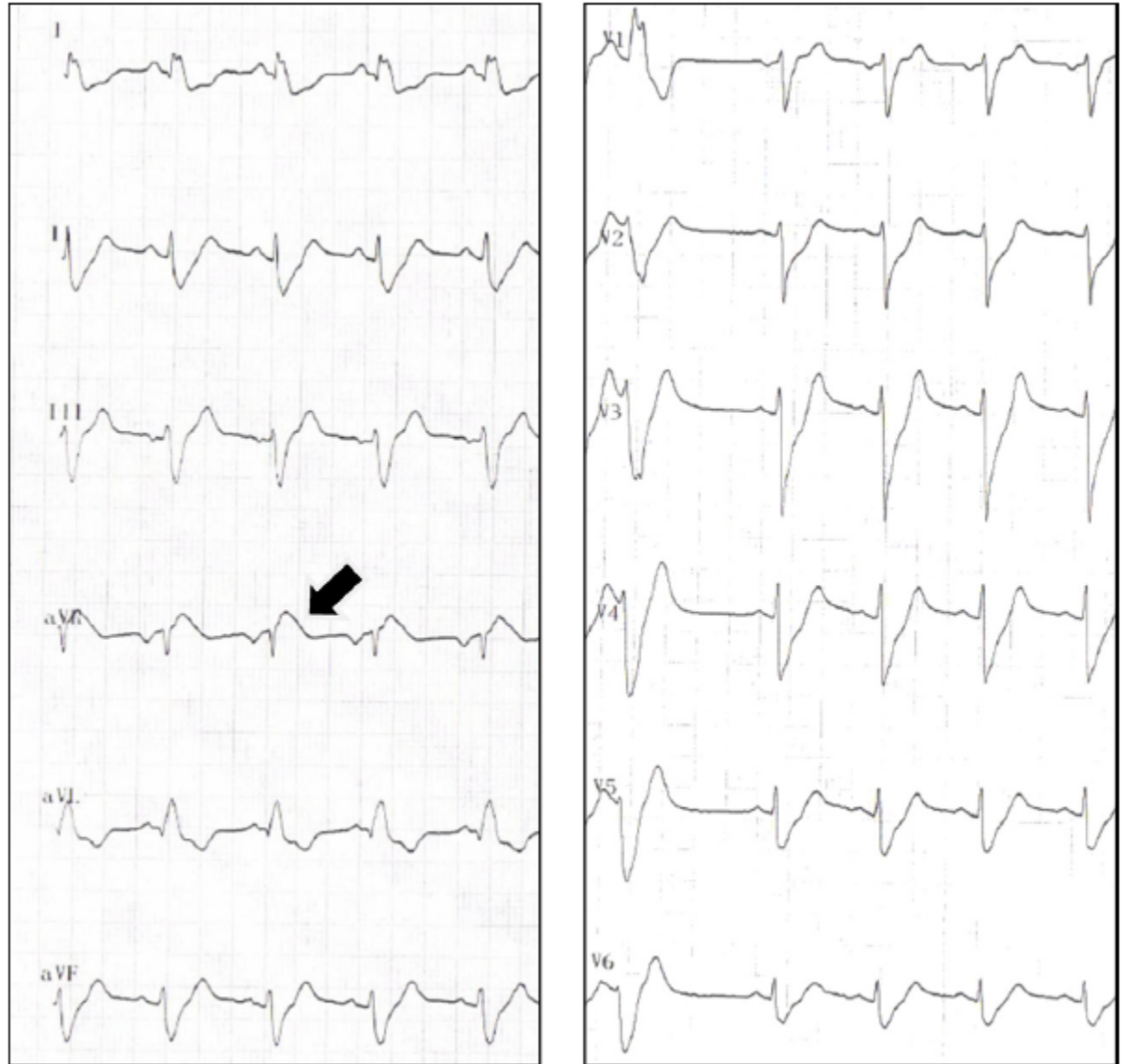
- SCA avec geste interventionnel nécessaire sur une coronaire ectopique : **difficultés techniques**
- Prise en charge d'une coronaire ectopique : **difficultés d'interprétation et de choix thérapeutique**

Connexions ectopiques proximales

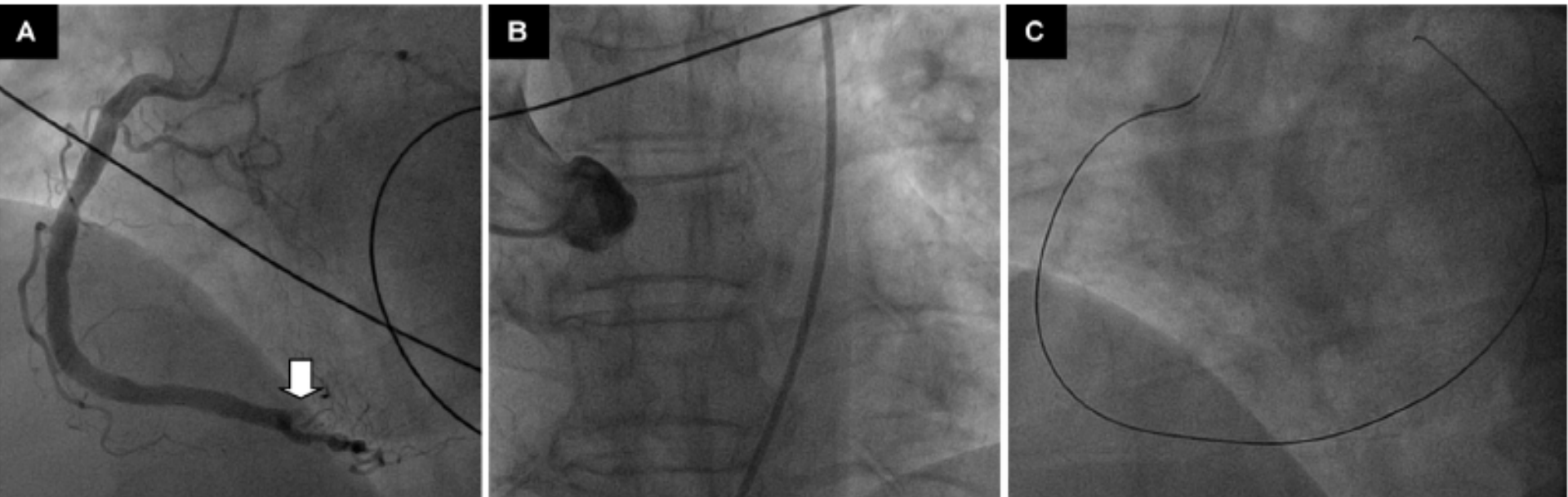


SCA et artère coronaire ectopique

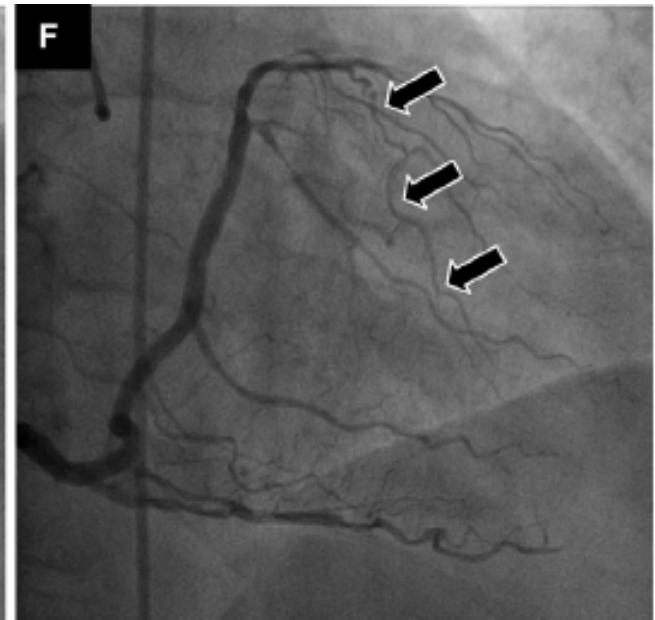
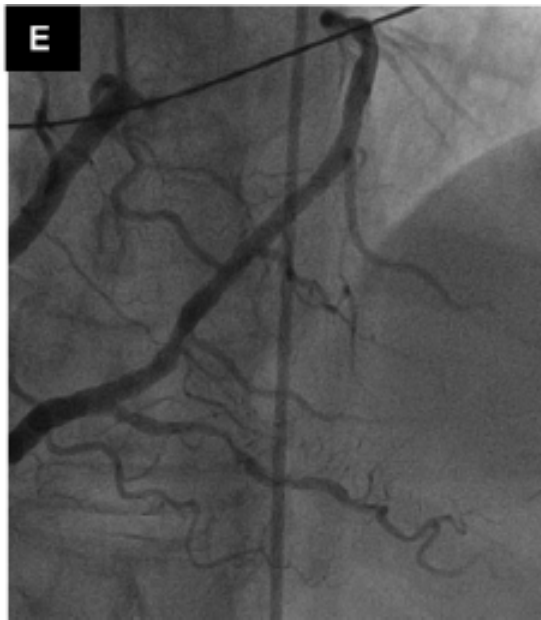
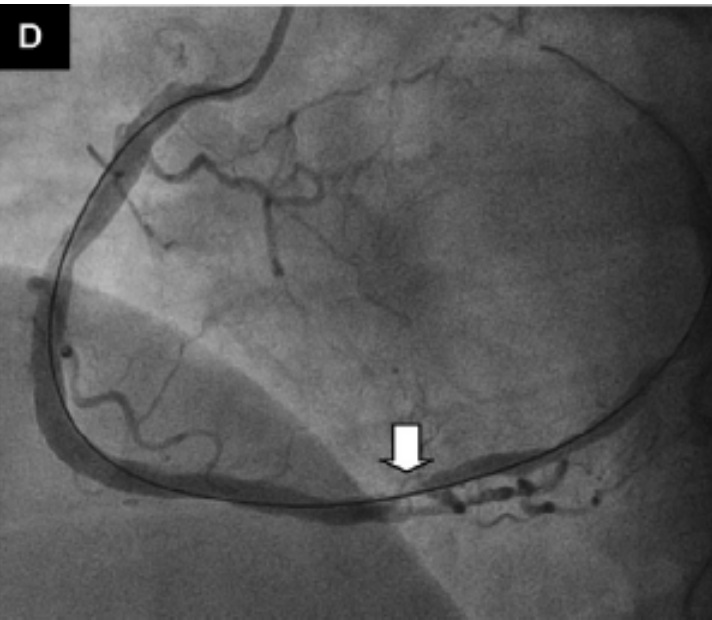
Mr S. 67 ans
Tabagisme
Douleur thoracique
OAP
Akinésie antérieure



SCA et artère coronaire ectopique



SCA et artère coronaire ectopique

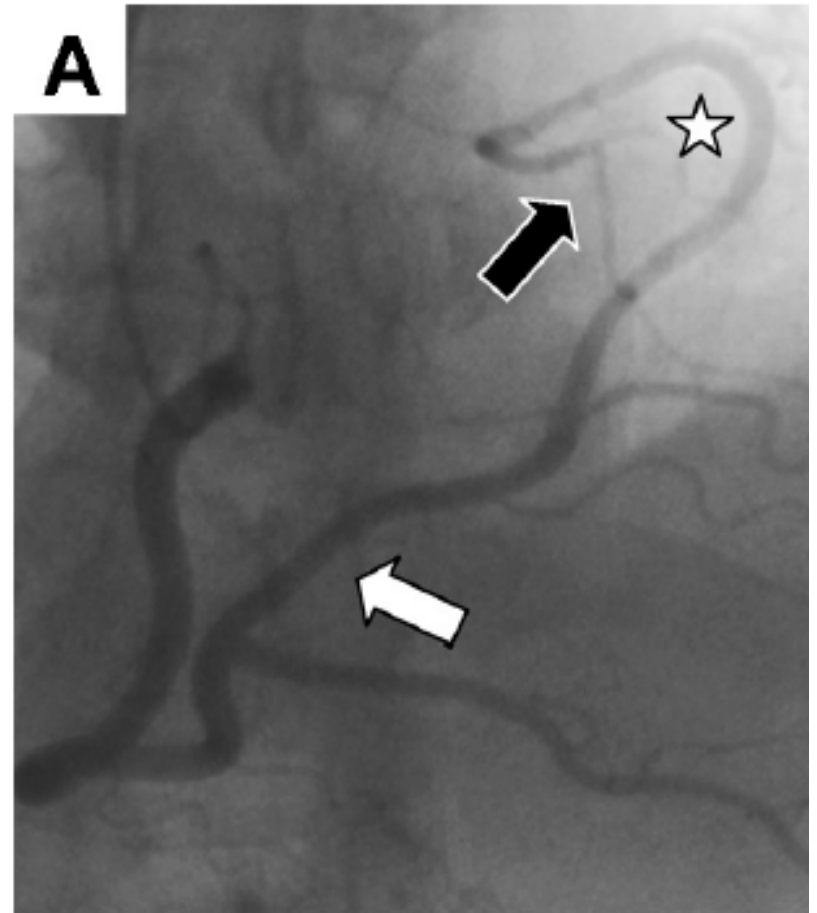


SCA et artère coronaire ectopique

TABLE 1 Demographic and angiographic characteristics of the ANOCOR cohort

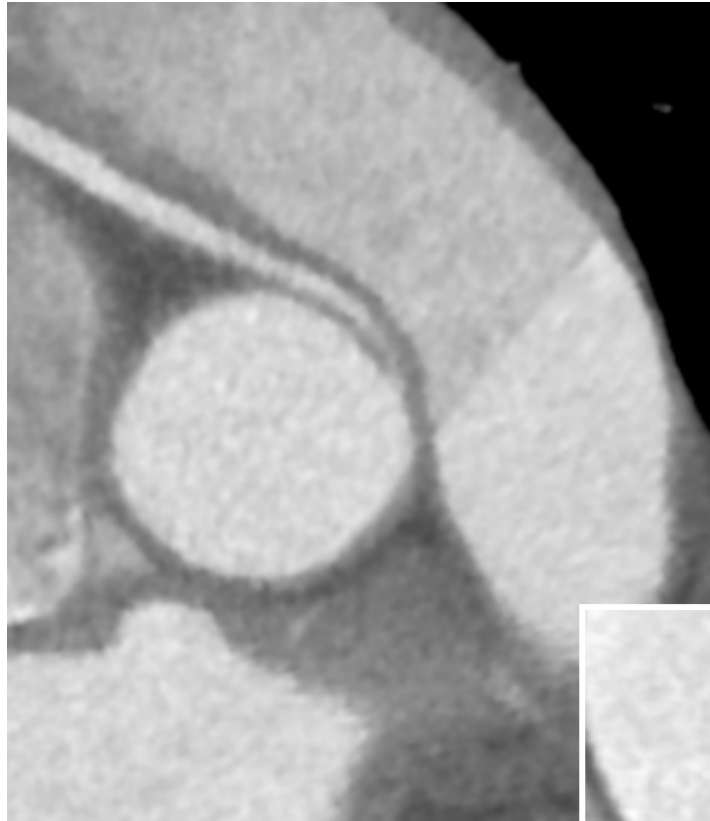
Parameters	
Number of subjects, n	472
Mean age, y (SD)	63 (13)
Gender male, %	76.2
Invasive CA alone, n (%)	297 (62.9)
Computed tomography CA alone, n (%)	20 (4.3)
Invasive + computed tomography CA, n (%)	155 (32.8)
Total number of anomalous connections	496
Type of artery	
Left main, n (%)	60 (12.1)
Left anterior descending, n (%)	27 (5.4)
Circumflex, n (%)	235 (47.4)
Right, n (%)	165 (33.3)
Other, n (%)	9 (1.8)
Site of connection	
Opposite sinus or contralateral artery, n (%)	451 (90.8)
Appropriate sinus	4 (0.8)
Noncoronary sinus	2 (0.4)
High take off ascending aorta	29 (6.0)
Single coronary artery	6 (1.2)
Pulmonary artery	4 (0.8)
Initial course	
Prepulmonary, n (%)	30 (6.0)
Retropulmonary, n (%)	46 (9.3)
Preaortic, n (%)	154 (31.1)
Retroaortic, n (%)	242 (48.8)
Other, n (%)	7 (1.4)
Normal, n (%)	14 (2.8)
Undetermined, n (%)	3 (0.6)

Abbreviations: CA, coronary angiography; SD, standard deviation.

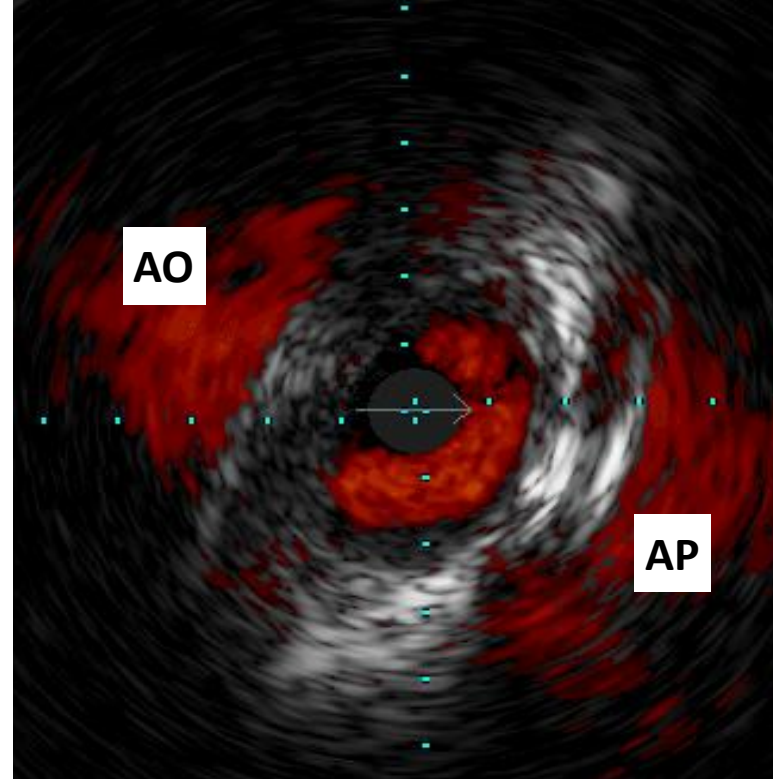
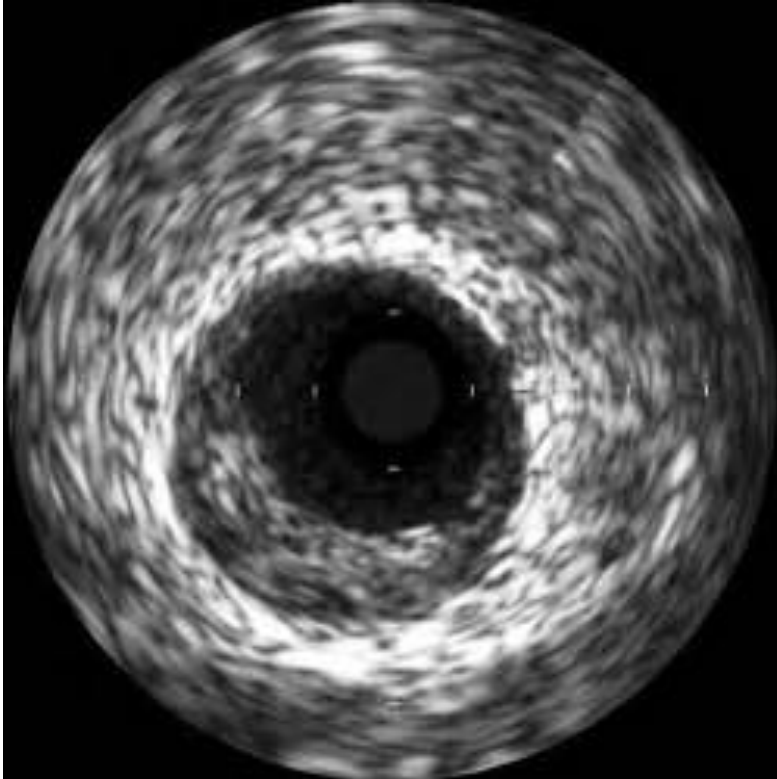


Koutsoukis A. Congenit Heart Dis 2017

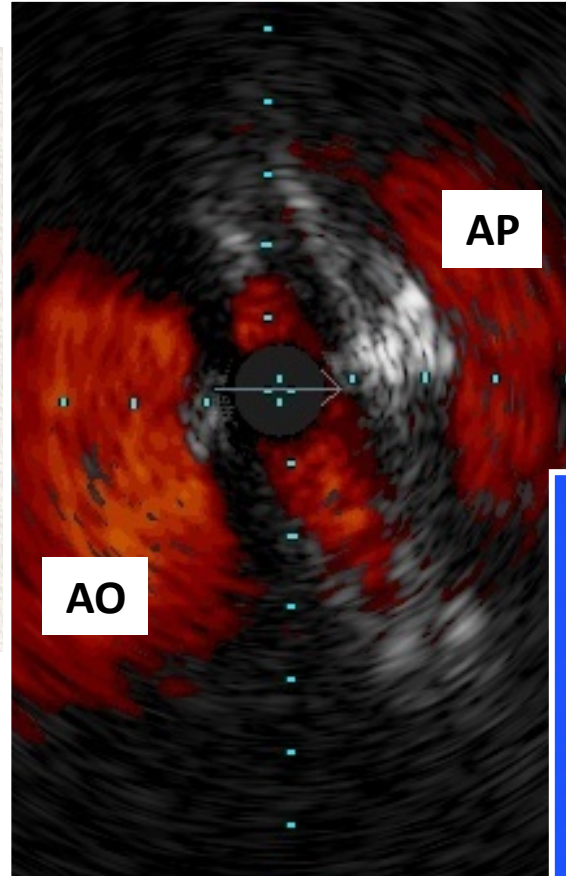
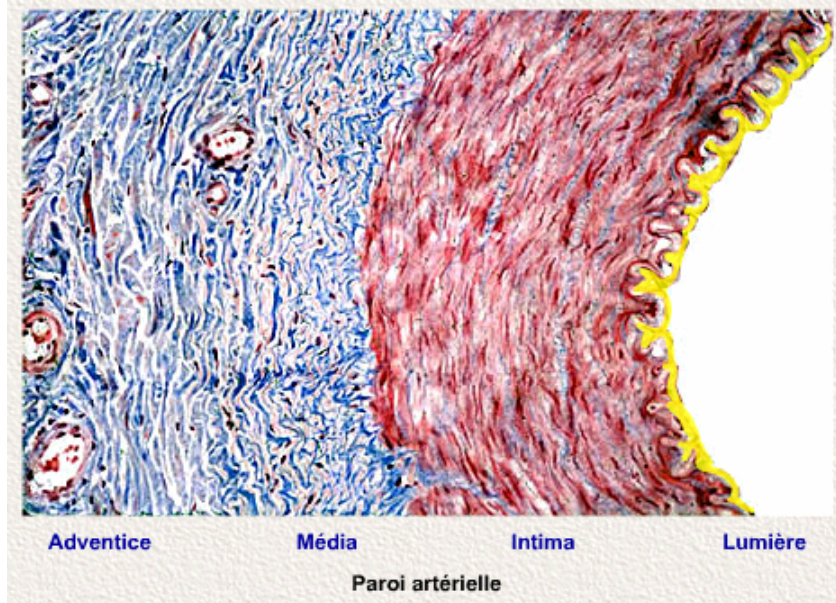
Modifications morphologiques d'une artère coronaire ectopique



Modifications morphologiques d'une artère coronaire ectopique

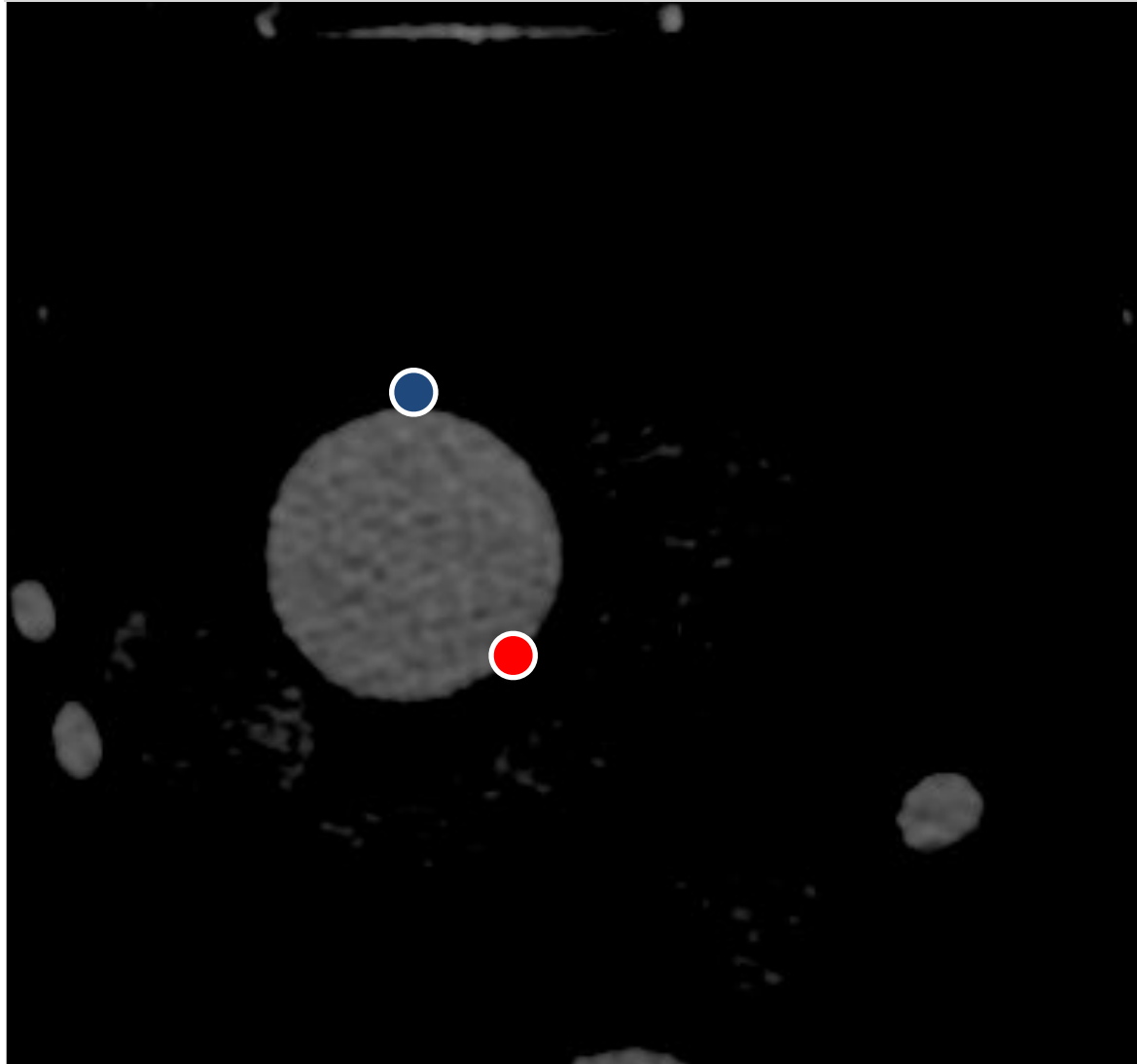


Modifications morphologiques d'une artère coronaire ectopique

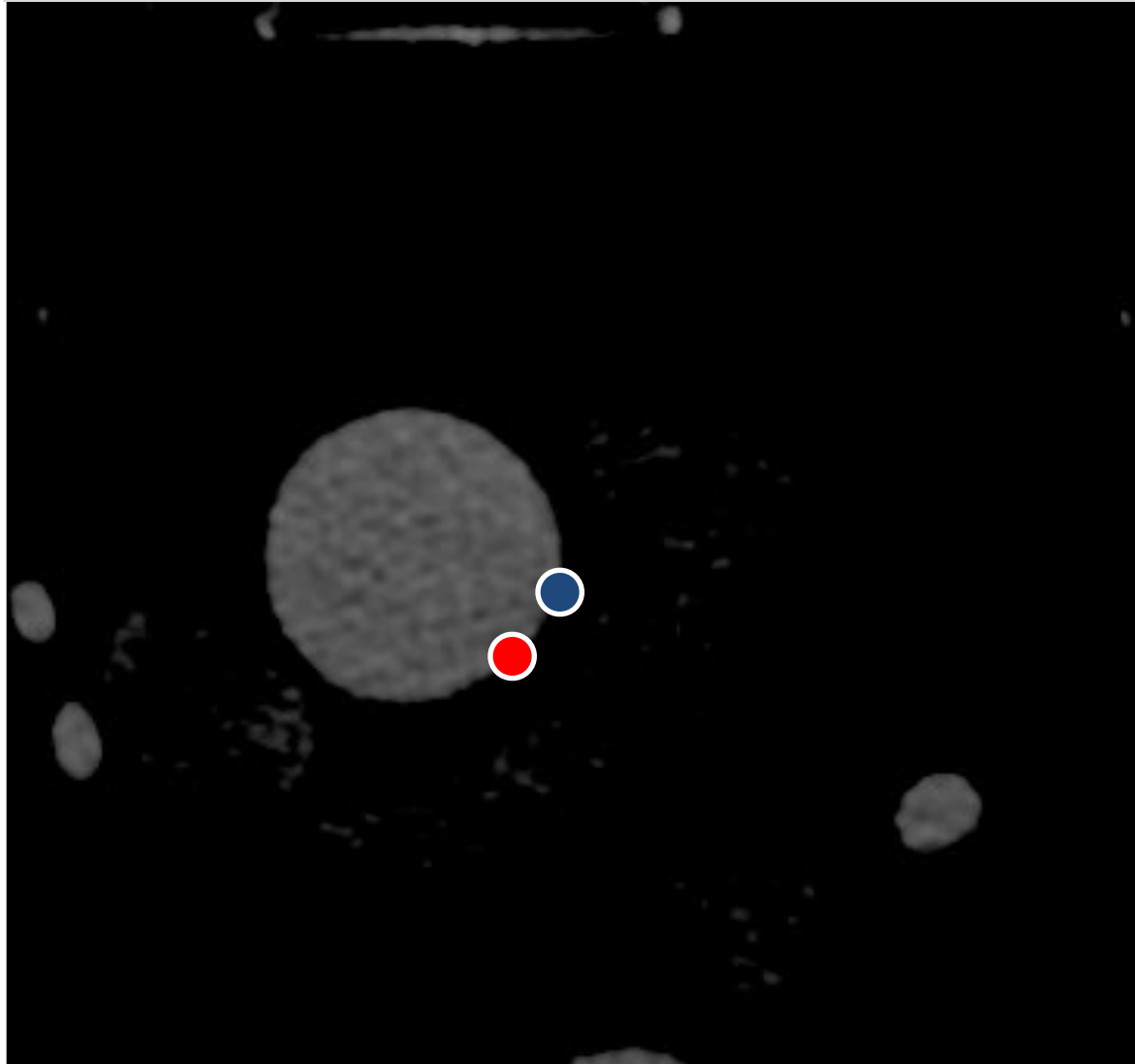


Hata Y et al.
Cardiovasc Pathol 2014

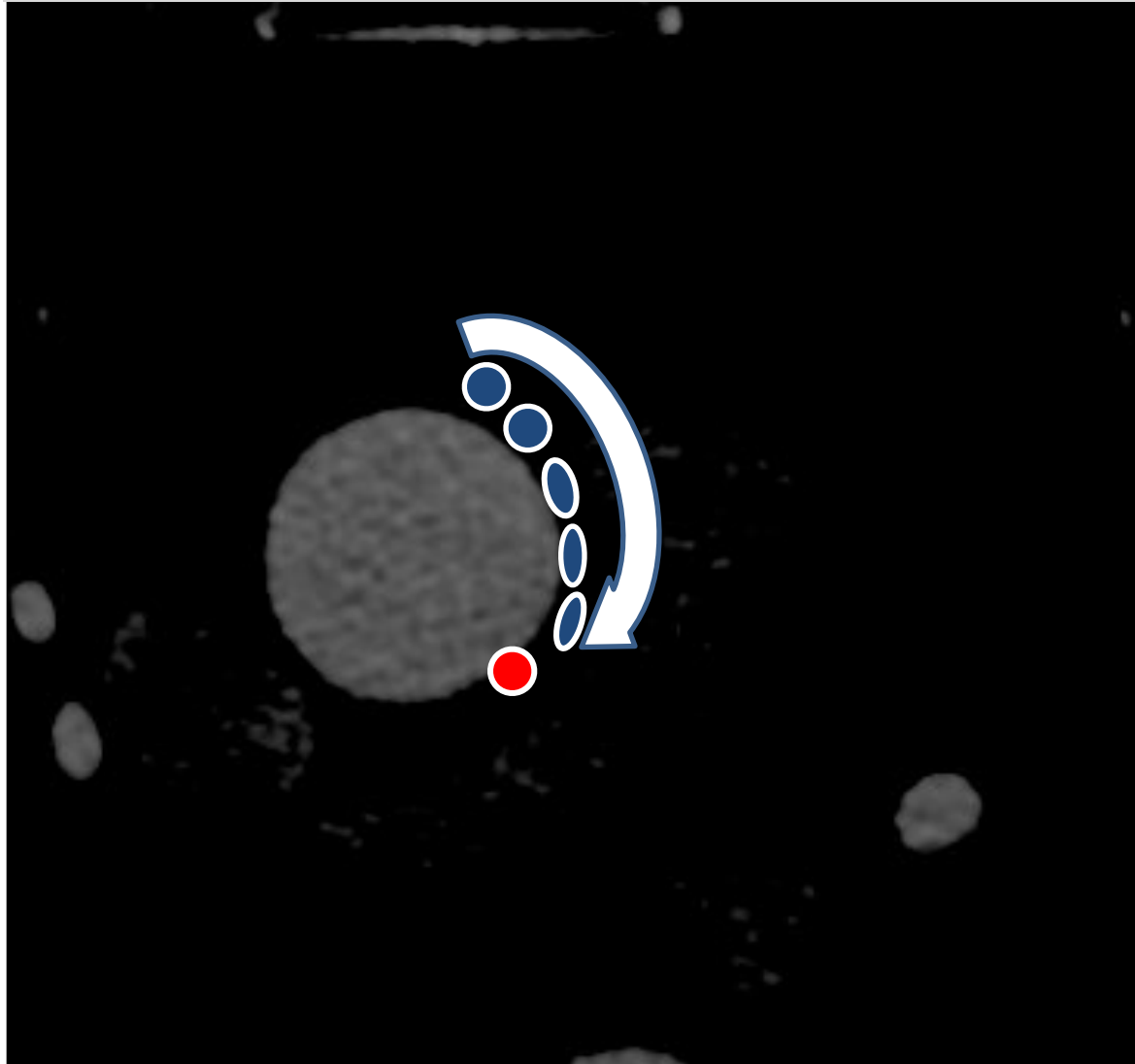
connexions coronaires normales

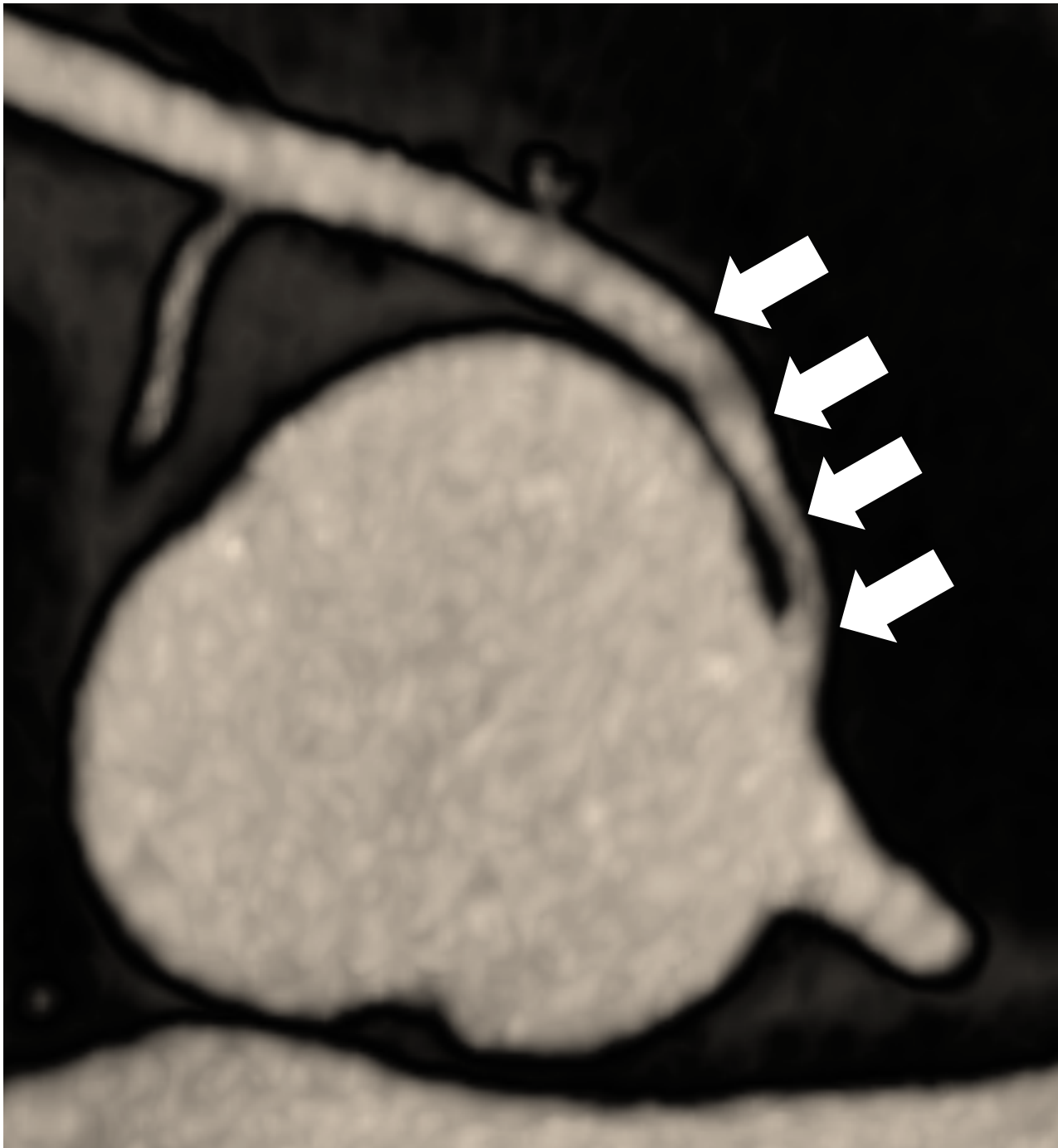


connexion ectopique droite



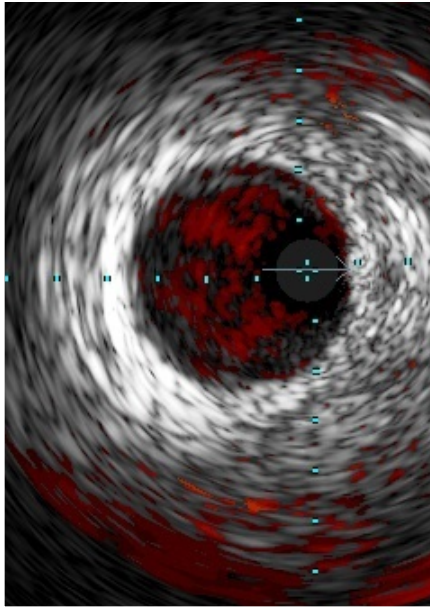
connexion ectopique droite



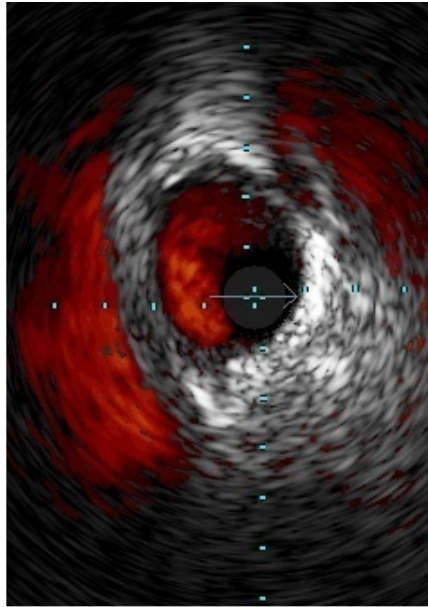


connexion ectopique droite (échographie endocoronaire)

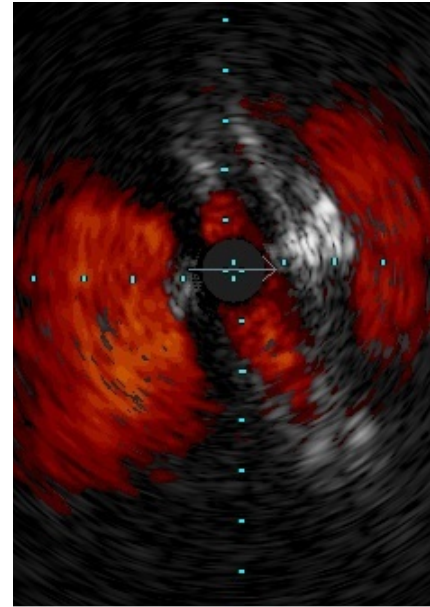
extramural



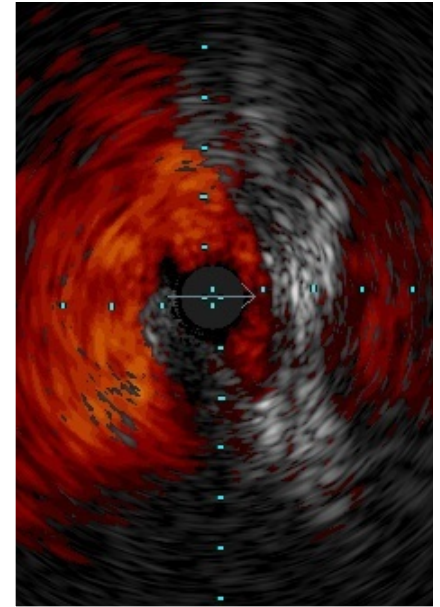
juxtamural



intramural

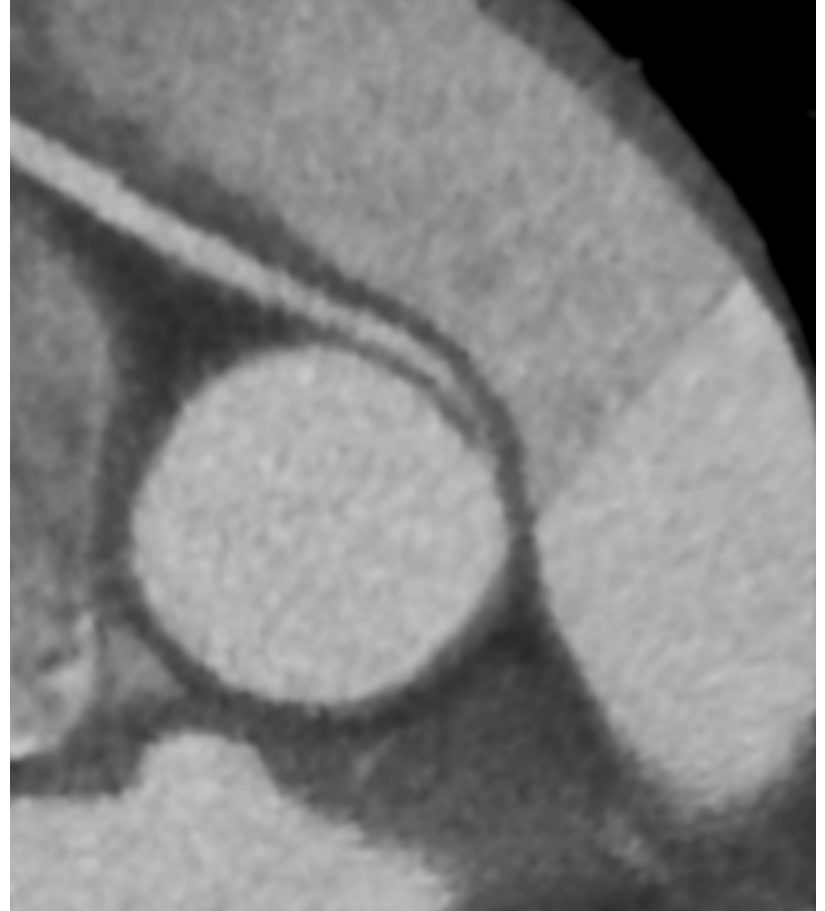


ostium



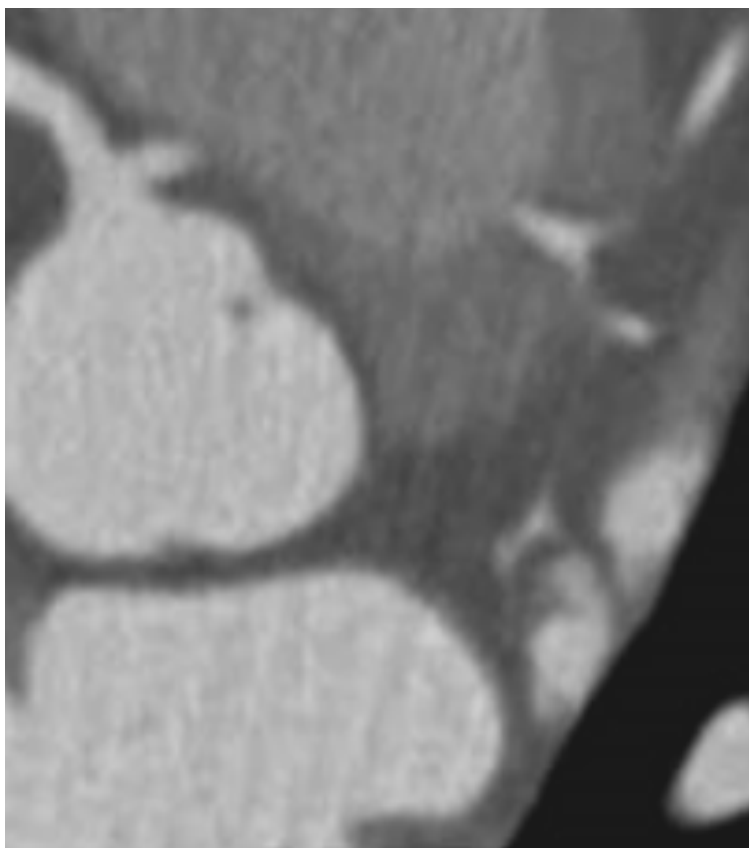
Classification d'une artère coronaire ectopique

formes à risque mort subite/ischémie myocardique



Connexion ectopique tronc commun

trajet rétropulmonaire

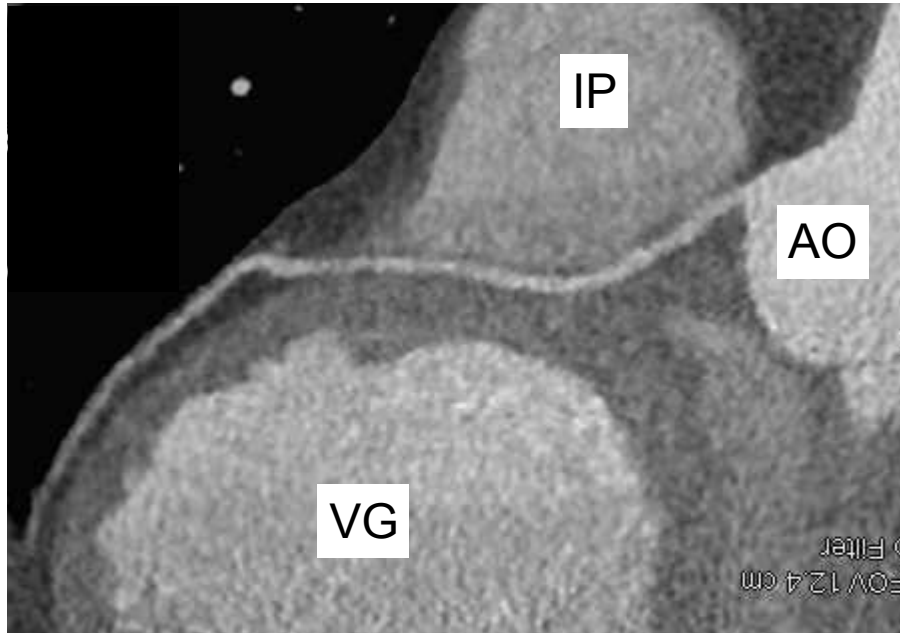


trajet préaortique

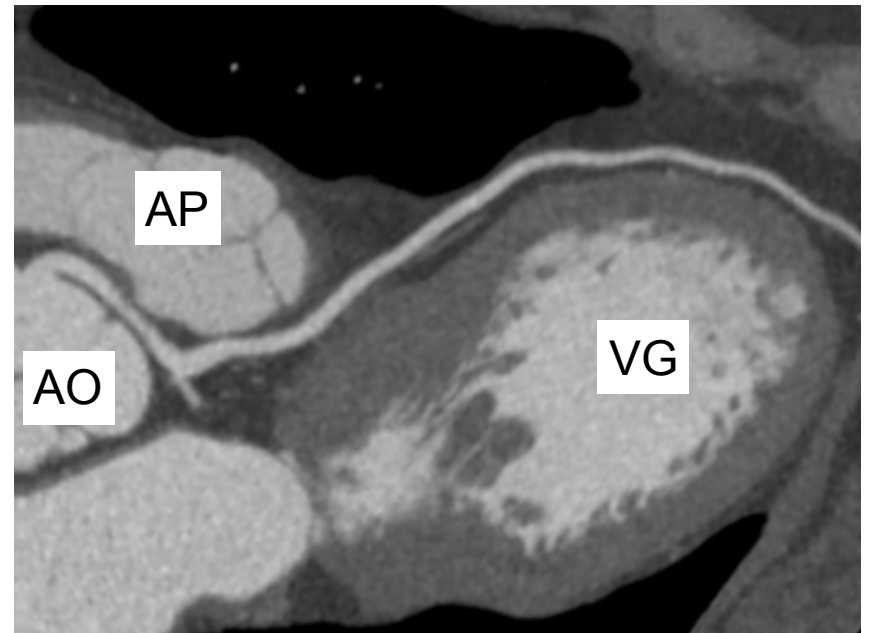


Connexion ectopique tronc commun

trajet rétropulmonaire

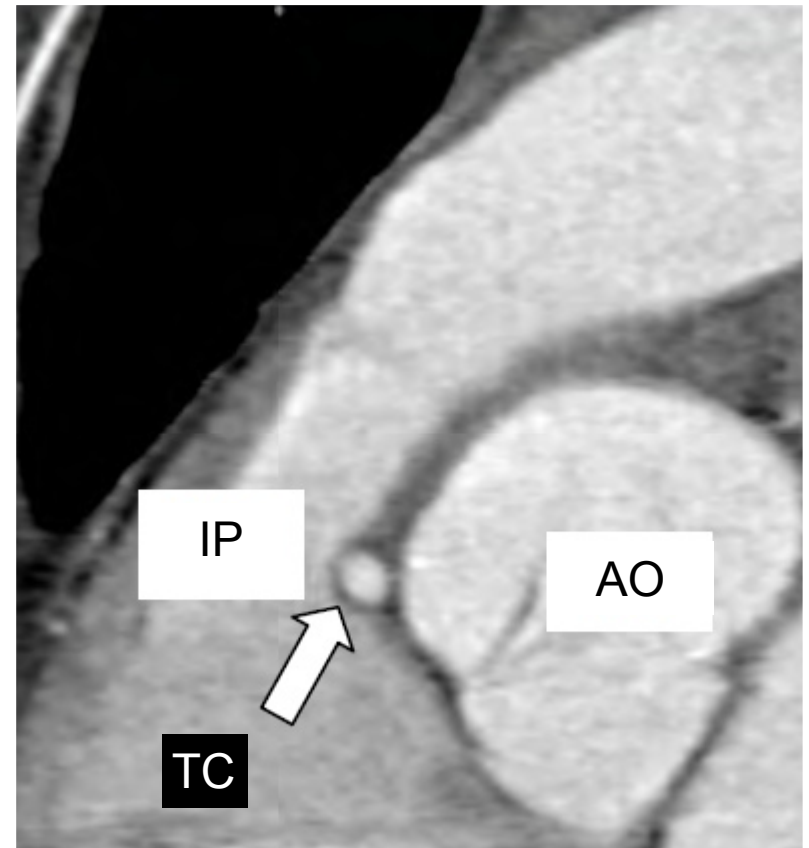
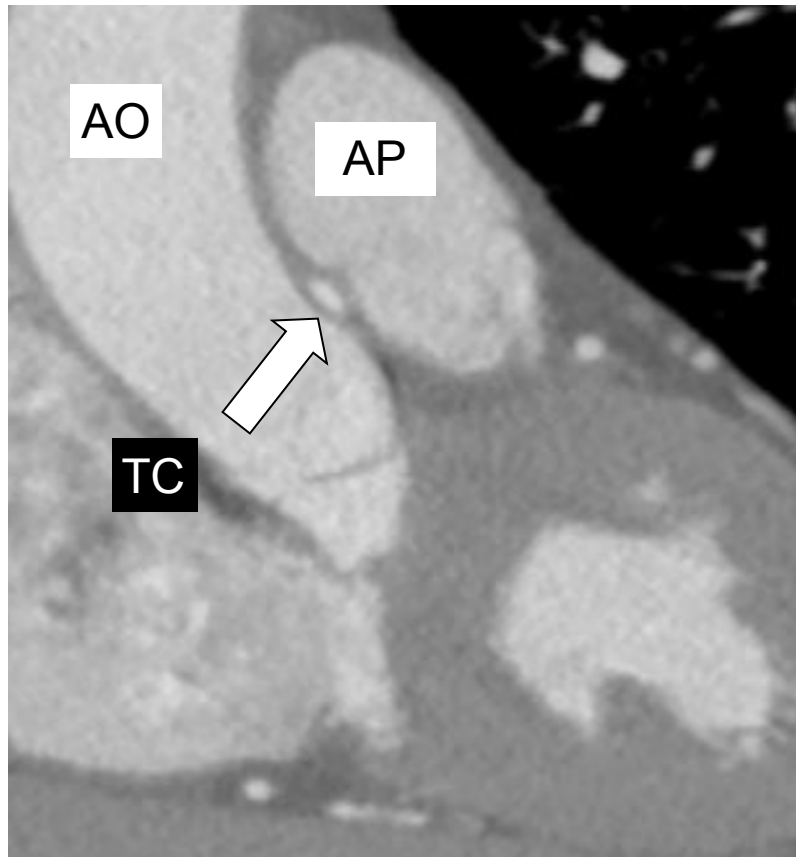


trajet préaortique



Classification d'une artère coronaire ectopique

trajet préaortique



trajet rétropulmonaire



Registry

Interobserver variability in the classification of congenital coronary abnormalities: A substudy of the anomalous connections of the coronary arteries registry

TABLE 5 Interobserver variability for the assessment of a preaortic course ($\kappa = 0.497$, 95% CI, 0.40–0.59; $P < .05$)

		Angiographic committee		
		Preaortic course	Other courses*	Total
Investigators	Preaortic course	78	27	105
	Other courses ^a	63	275	338
	Total	141	302	443

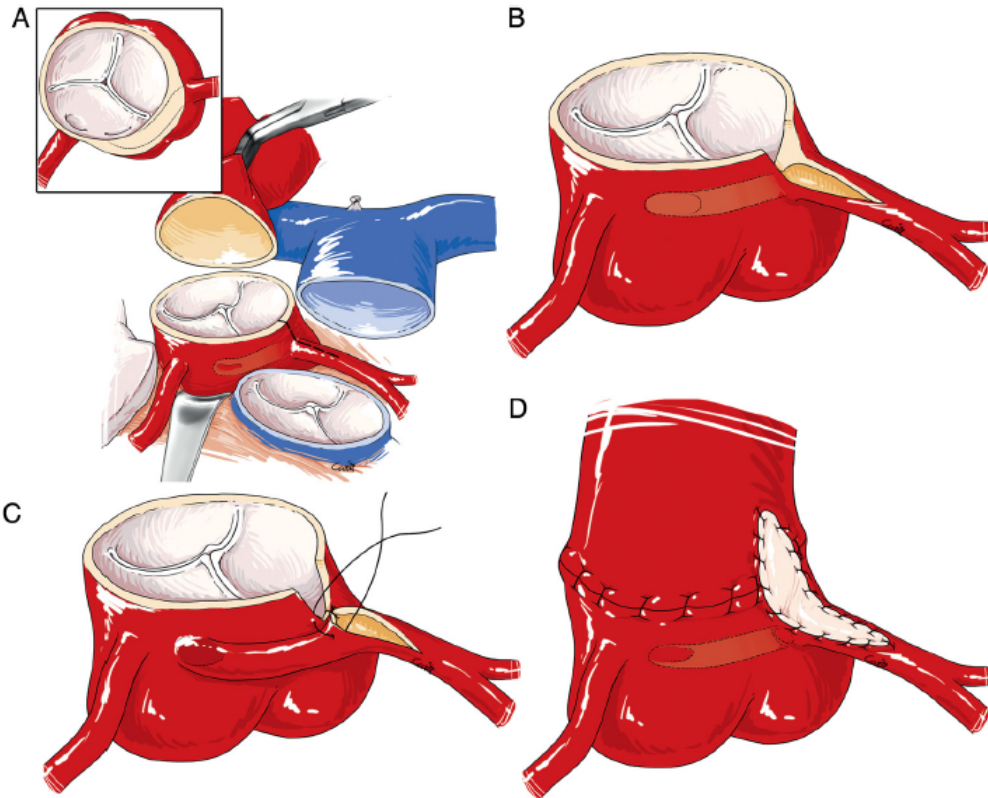
^aIncluding undetermined course.

Prise en charge d'une artère coronaire ectopique à risque

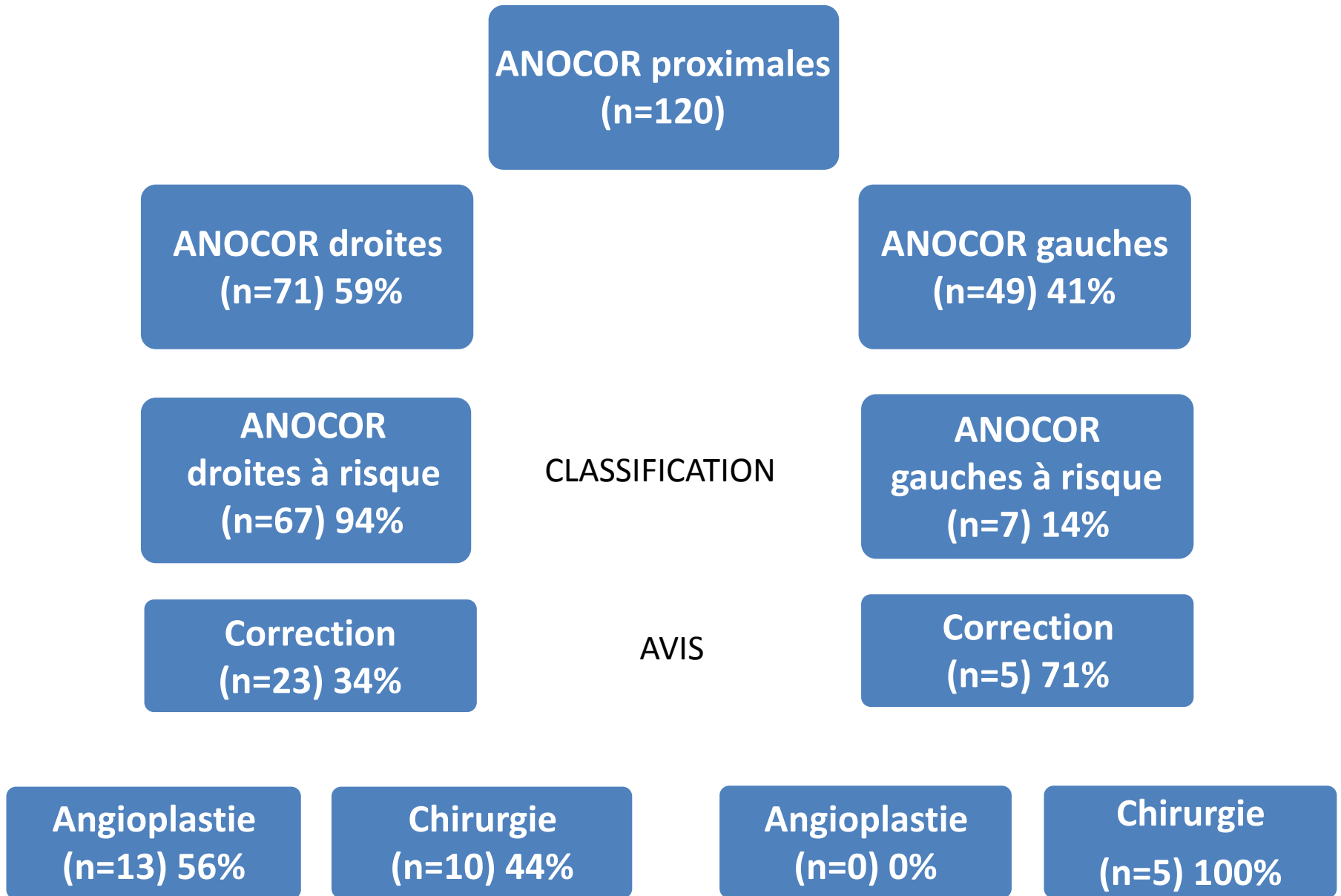
pas de correction

correction

restriction sportive



Activité du staff ANOCOR 2015 - 2017



ANOCOR RISK

cohorte observationnelle prospective

ANOCOR associés à un risque ischémie/mort subite

formes anatomiques avec trajet interartériel

arrêts cardiaques récupérés

début du recrutement : été 2018



merci

pcaubry@yahoo.fr

