



APPAC

PALAIS
DE CONGRES
BIARRITZ
7/8/9
JUN 2017

Clinique
Saint-Hilaire 

La bifurcation revisitée : Intérêt des catheters double-lumière

M.Godin

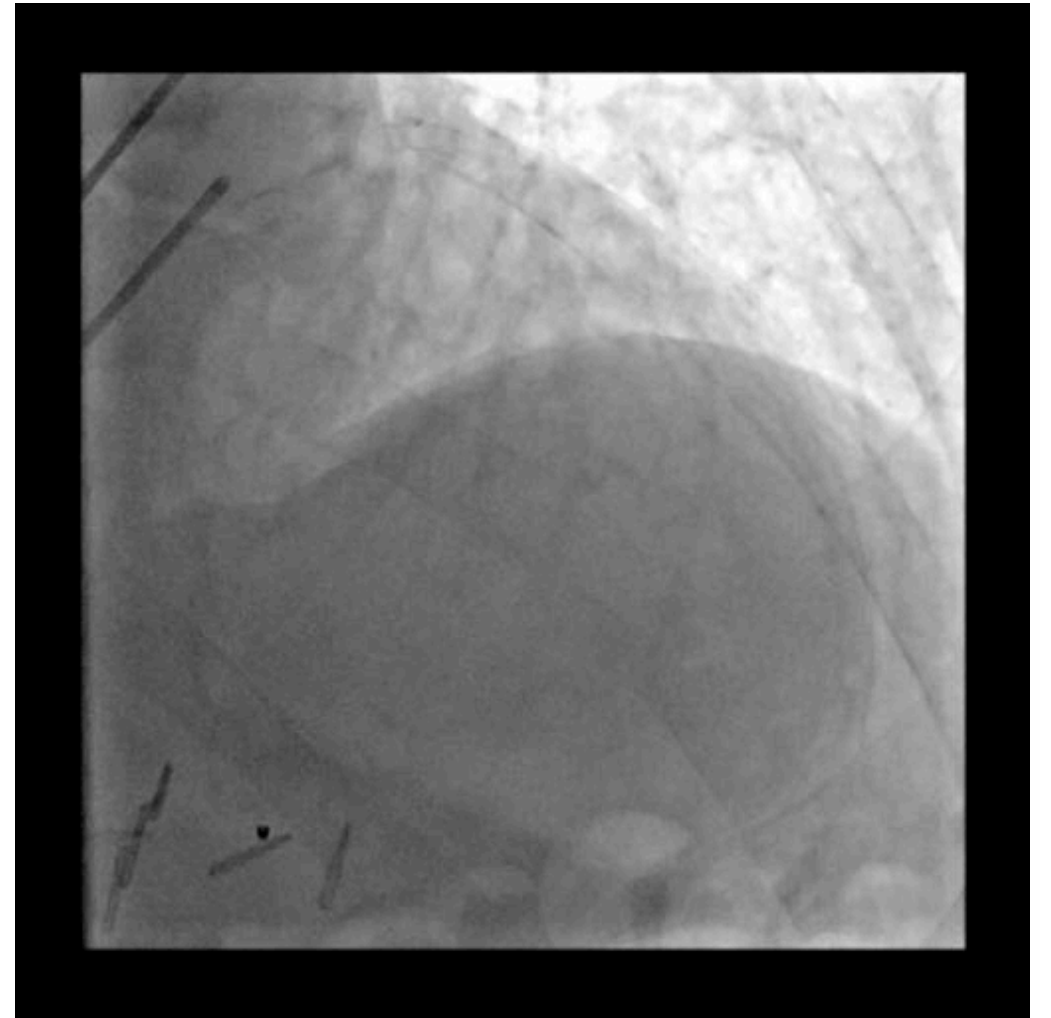
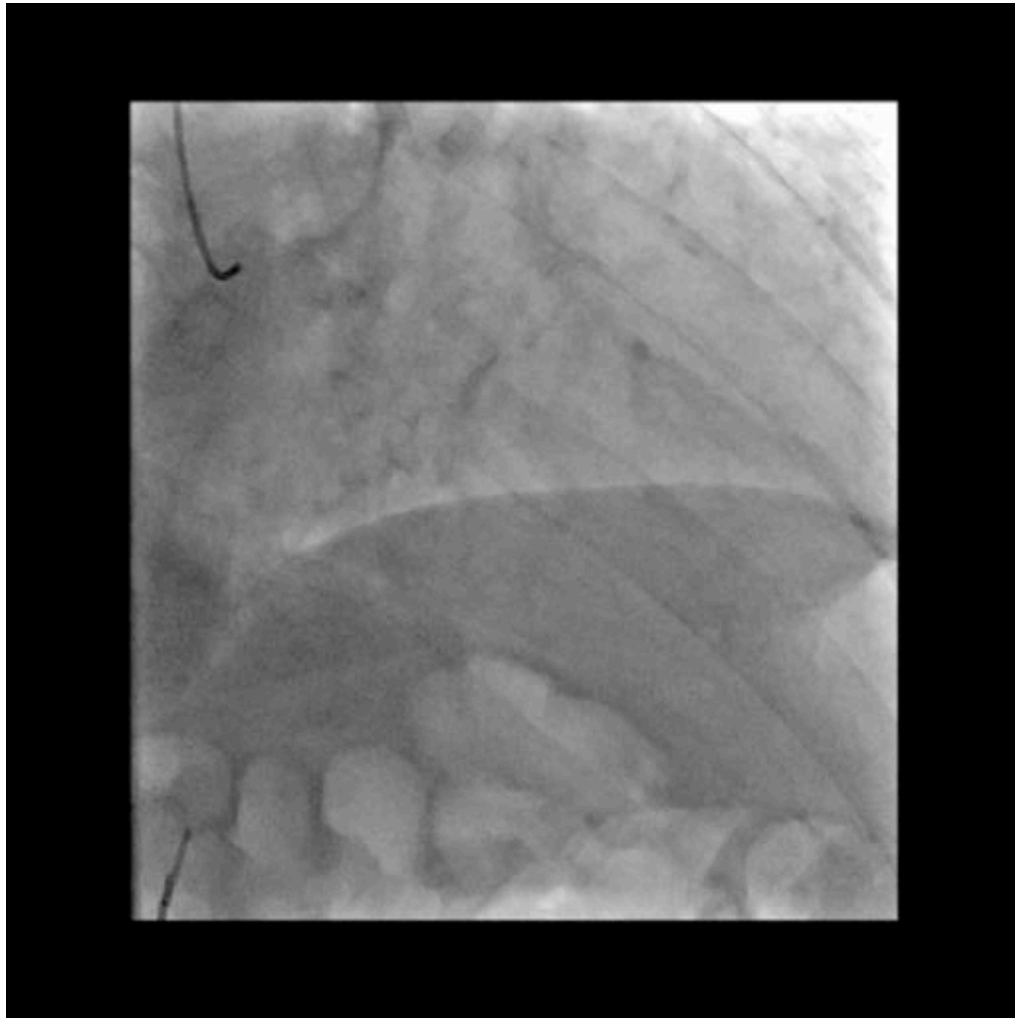


Disclosure Statement of Financial Interest

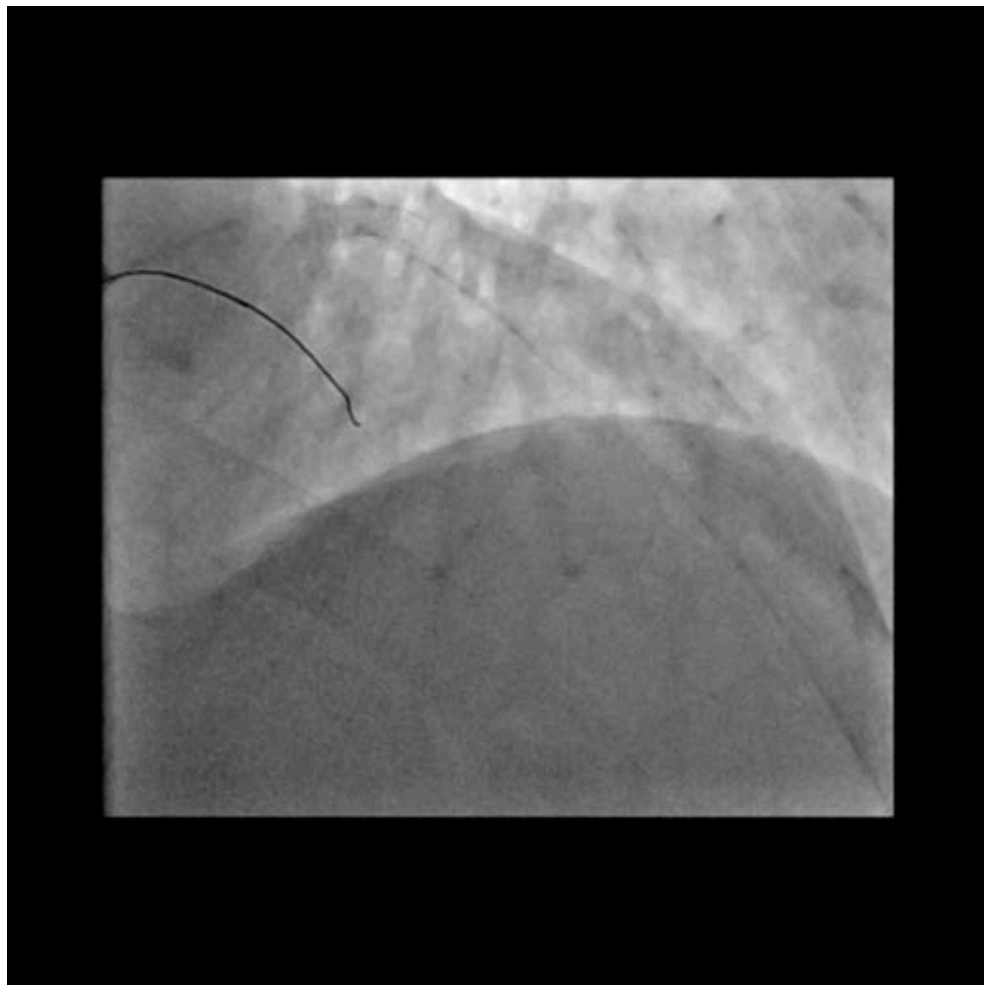
Within the past 12 months, I or my spouse/partner have had a financial interest/arrangement or affiliation with the organization(s) listed below.

Affiliation/Financial Relationship	Company
<ul style="list-style-type: none">• Grant/Research Support• Consulting Fees/Honoraria	<ul style="list-style-type: none">•• Abbott vascular , St Jude Medical, Pfizer, Astra Zeneca, Lilly, Biotronik
<ul style="list-style-type: none">• Major Stock Shareholder/Equity• Royalty Income• Ownership/Founder• Intellectual Property Rights• Other Financial Benefit	<ul style="list-style-type: none">•••••

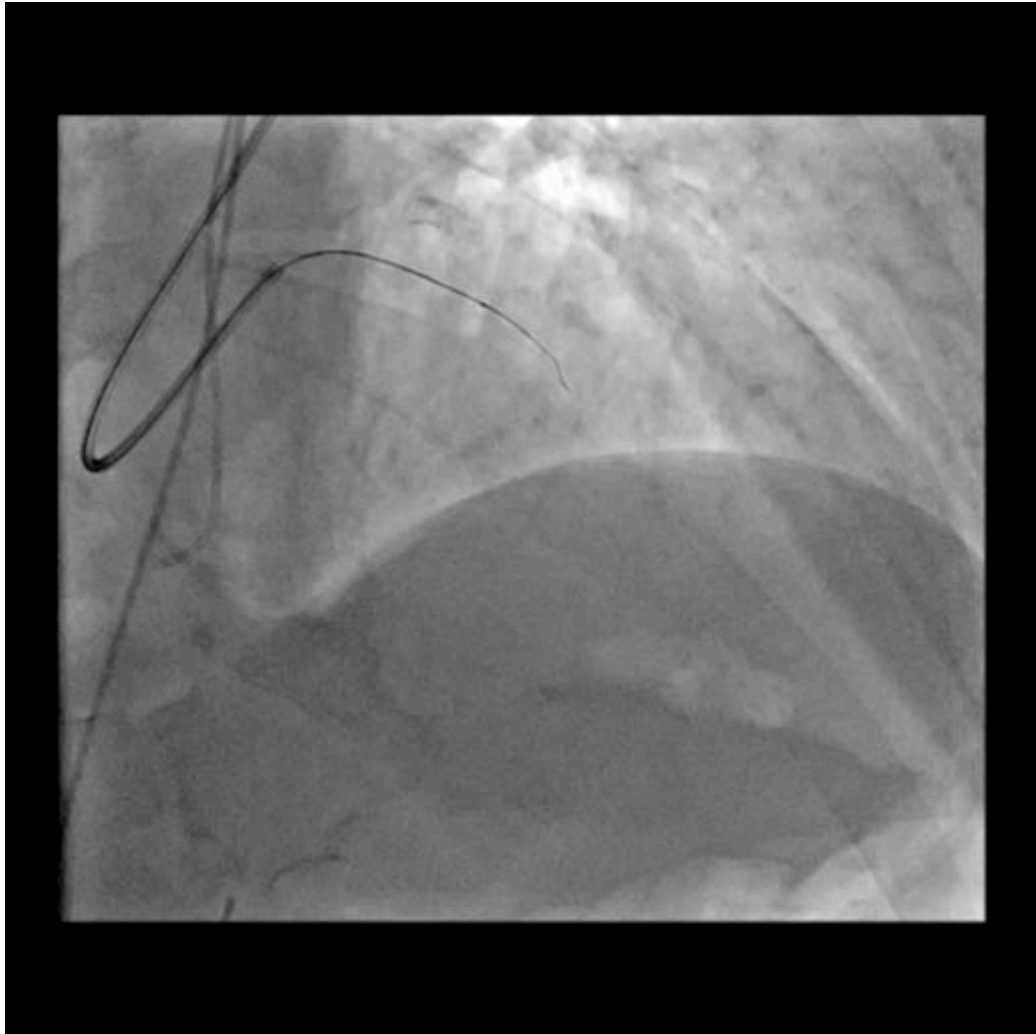
J-CTO SCORE : 2



Simple abord et pas de double injection...

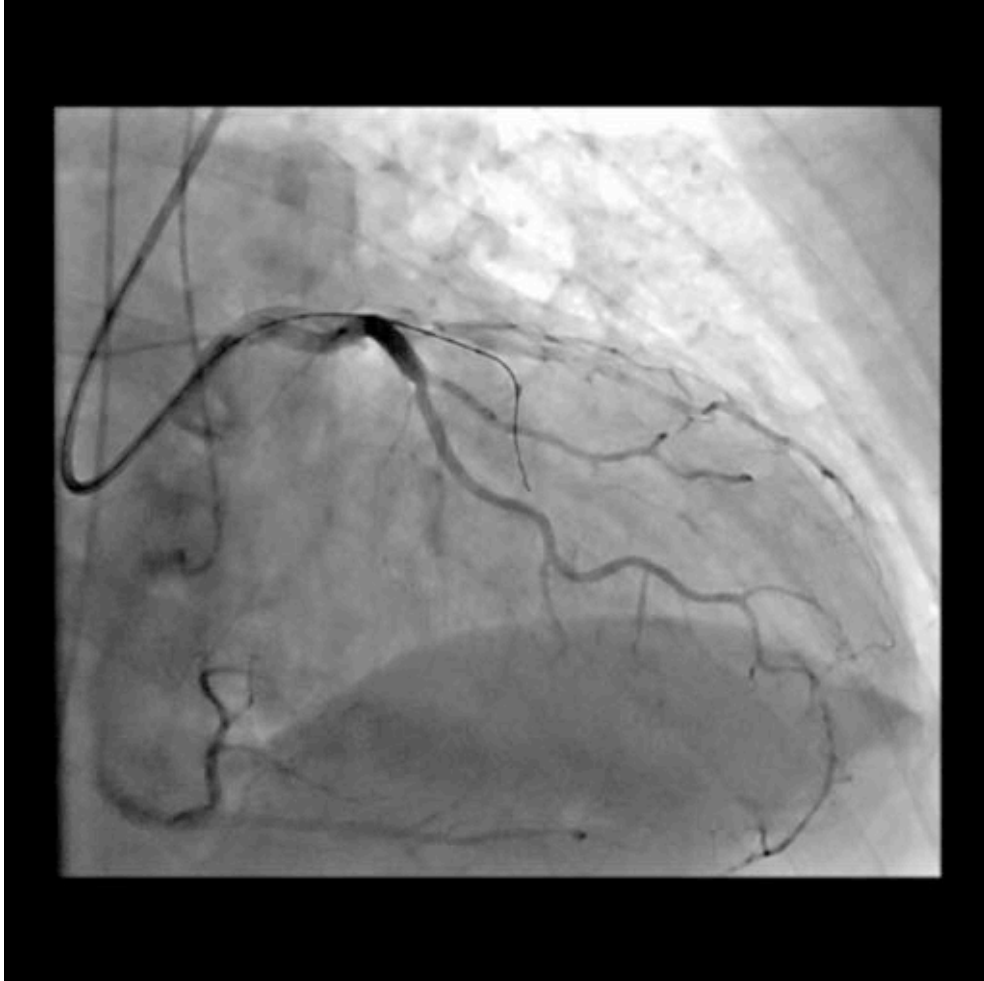


Finecross et Gaia 2 et....
franchissement :
besoin d'une injection controlatérale !!!



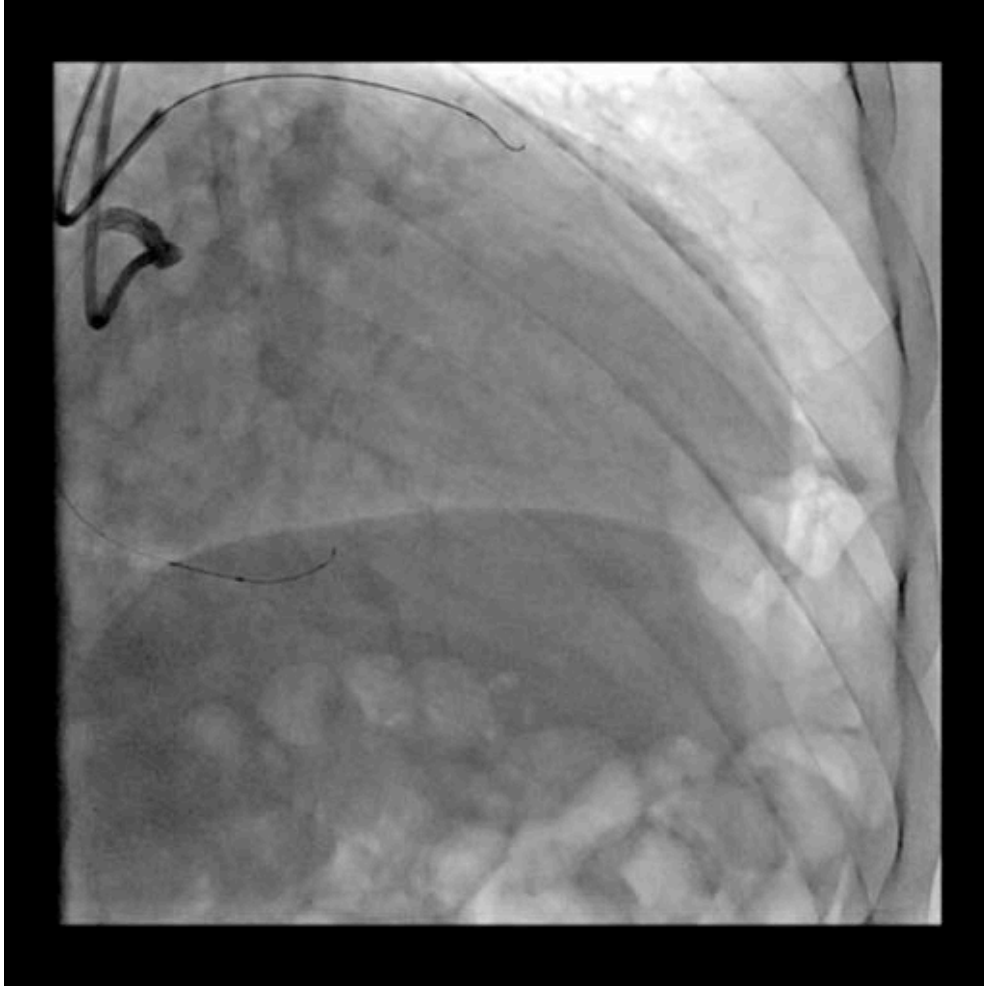
Echec Gaia-Fielder XT

Décision de passage en rétrograde : Problème du choix du vaisseau



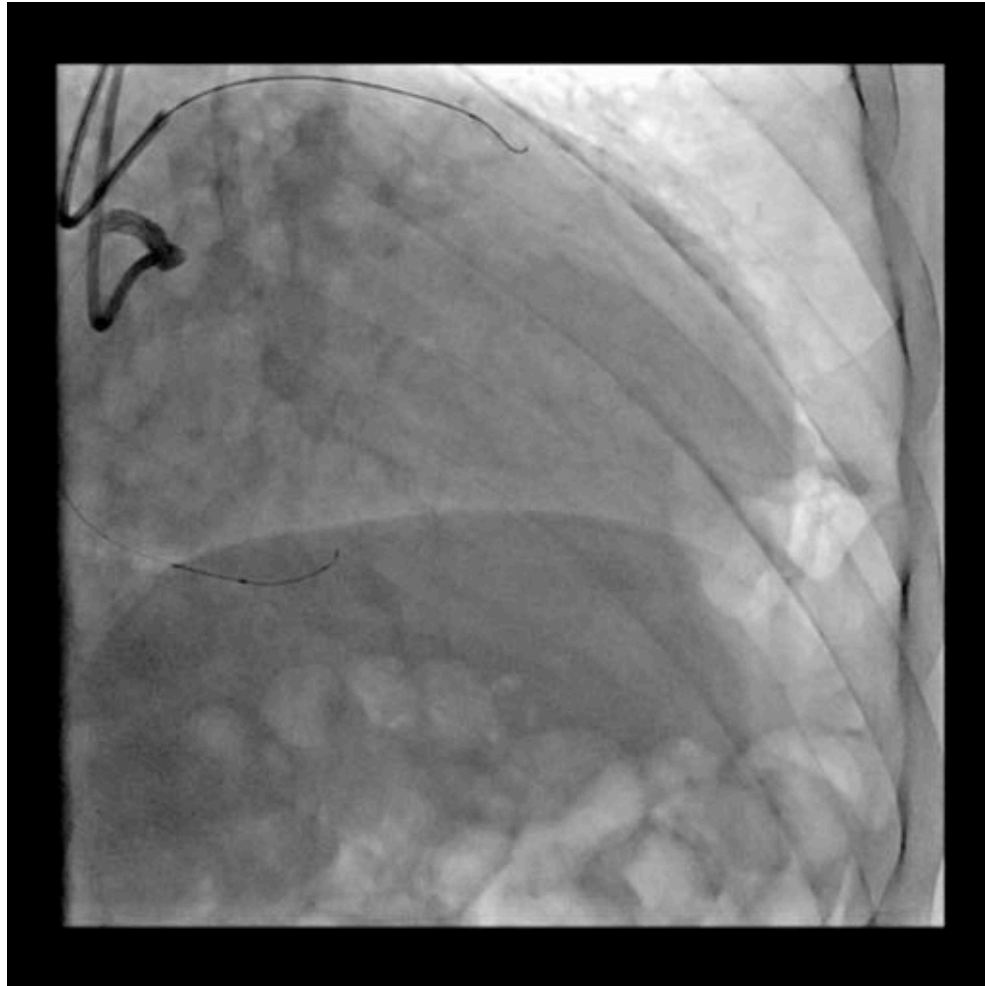
- Ne pas abimer septale nourricière

Décision de passage en rétrograde : Problème du choix du vaisseau



- ~~Ne pas abimer septale nourricière :~~
Epicardique Marginale bord Dt
- Reprise tres distale mais pb longueur et risque passage éplicardique

Décision de passage en rétrograde : Problème du choix du vaisseau



- ~~Ne pas abimer septale nourricière :~~
Epicardique Marginale bord Dt
- ~~Reprise tres distale mais pb longueur et risque passage épicaordique :~~
Passage par septale

Safety and effectiveness of the surfing technique to cross septal collateral channels during retrograde chronic total occlusion percutaneous coronary intervention

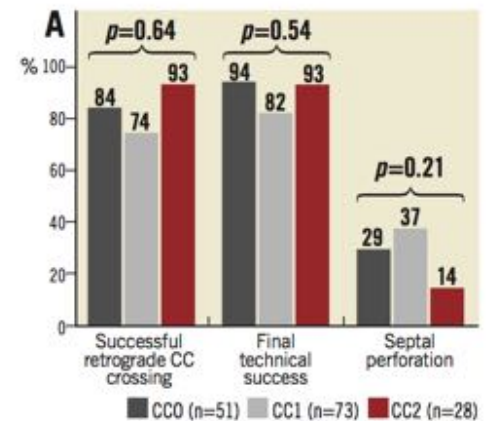


Rustem Dautov^{1,2,3}, MD, PhD, FRACP; Marina Urena^{1,2,4}, MD; Can Minh Nguyen^{1,2}, MD; Claire Gibrat¹, PhD; Stéphane Rinfret^{1,3*}, MD, SM, FSCAI

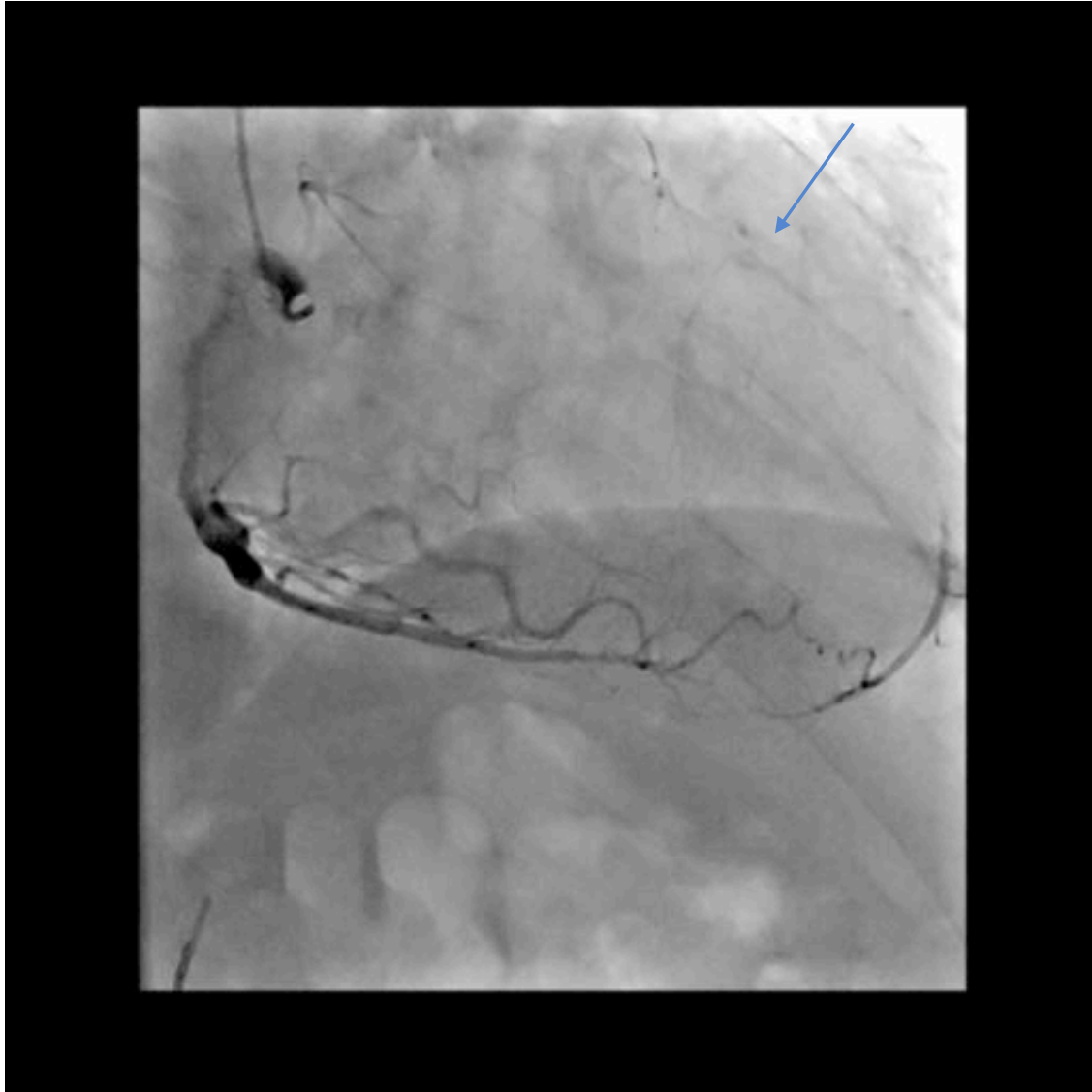
1. Quebec Heart and Lung Institute, Laval University, Quebec City, Quebec, Canada; 2. Quebec Heart and Lung Institute Research Centre, Quebec City, Quebec, Canada; 3. McGill University Health Centre, McGill University, Montreal, Quebec, Canada; 4. Cardiology Department, Bichat-Claude Bernard Hospital, Paris, France

This paper also includes supplementary data published online at: http://www.pcronline.com/eurointervention/1120_issue/304

EuroIntervention 2017;12:e1859-e1867

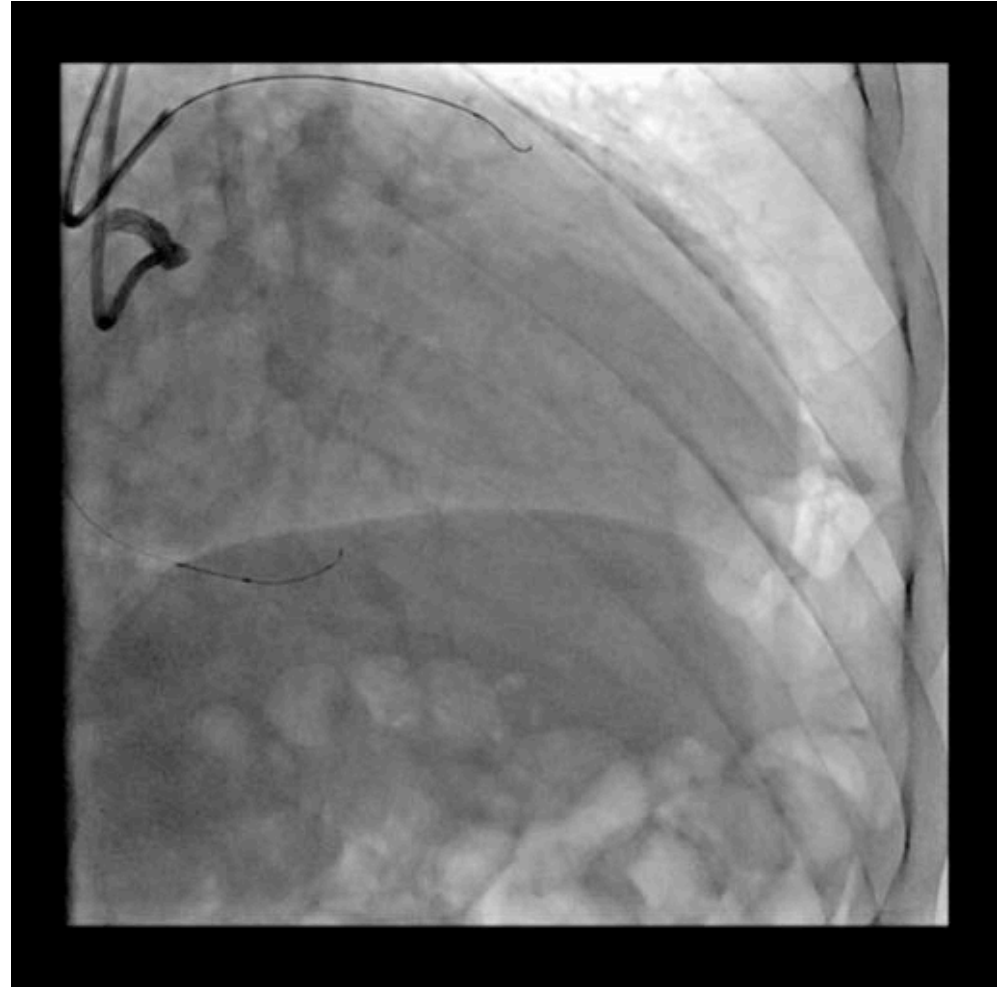
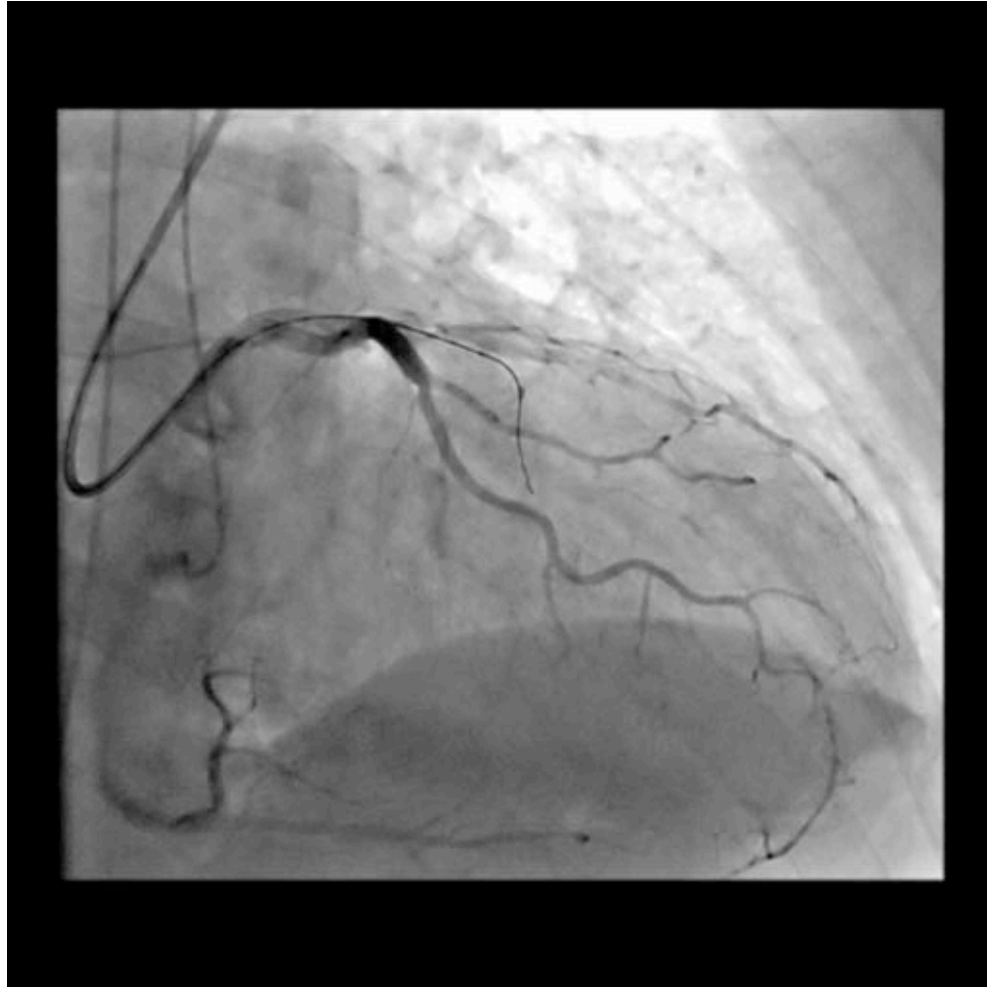


Décision de passage en rétrograde : Problème du choix du vaisseau



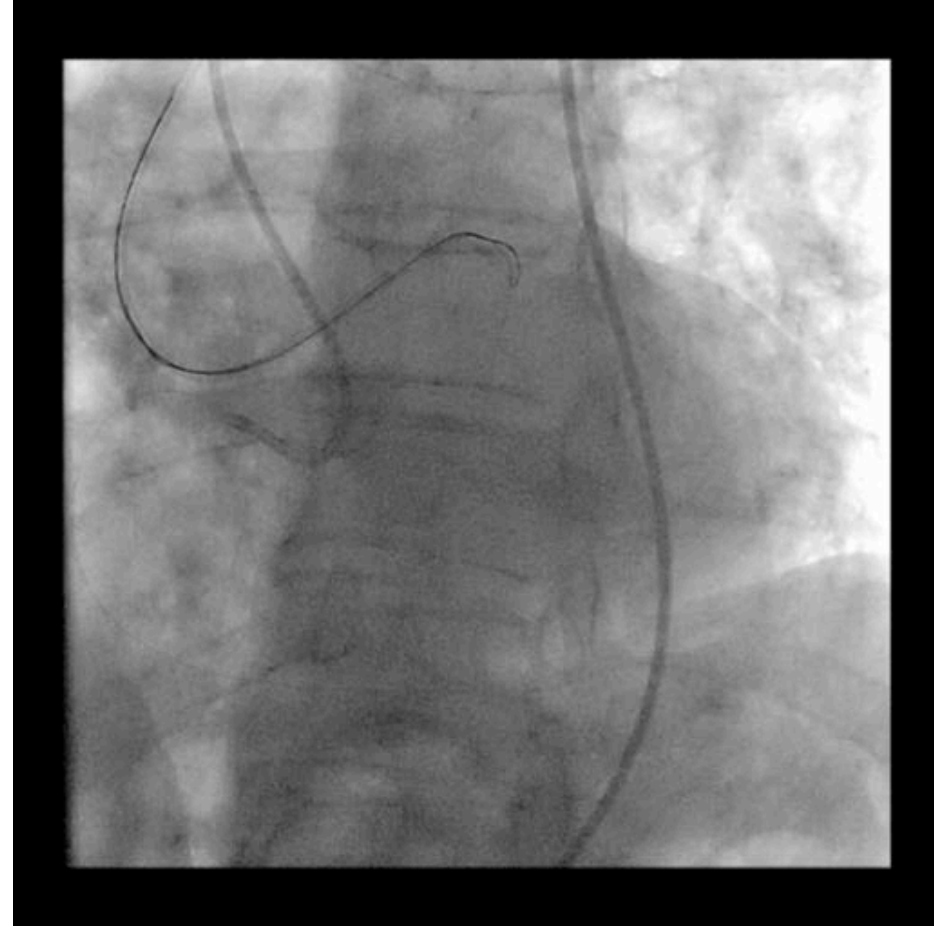
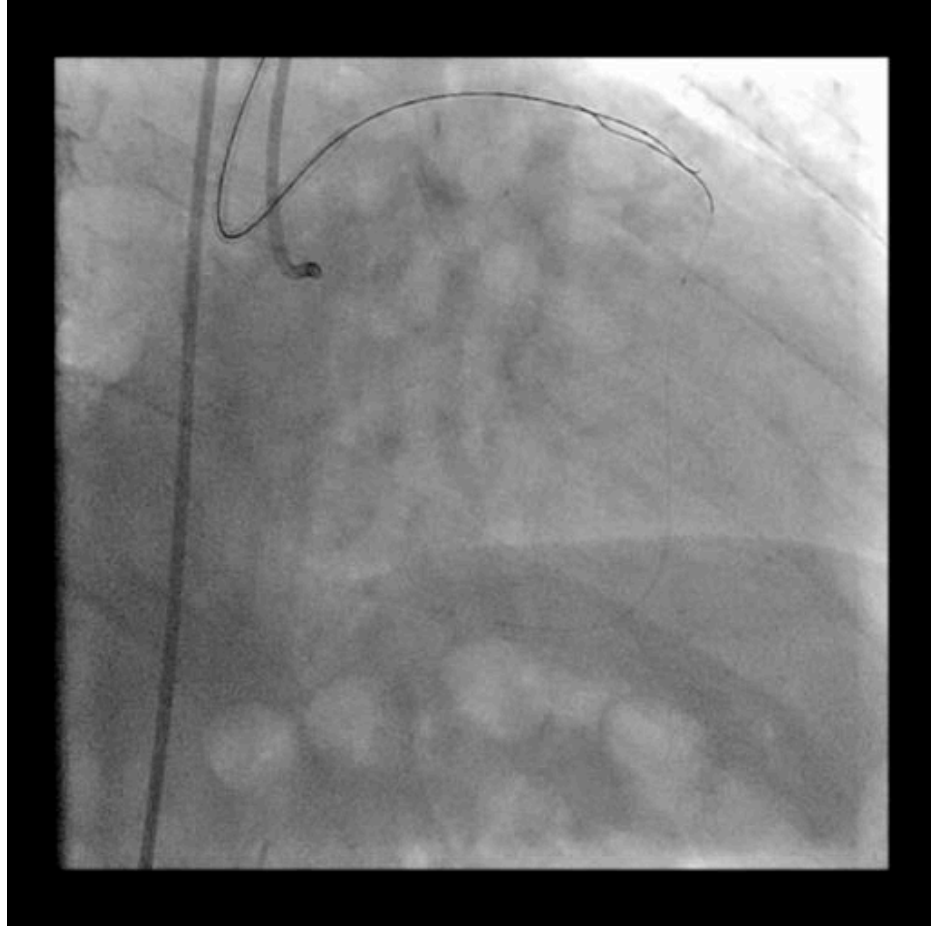
- ~~Ne pas abimer septale nourricière~~
- ~~Reprise tres distale mais pb longueur et risque passage épicaordique~~
- Pb de double occlusion sur IVA moyenne

Décision de passage en rétrograde

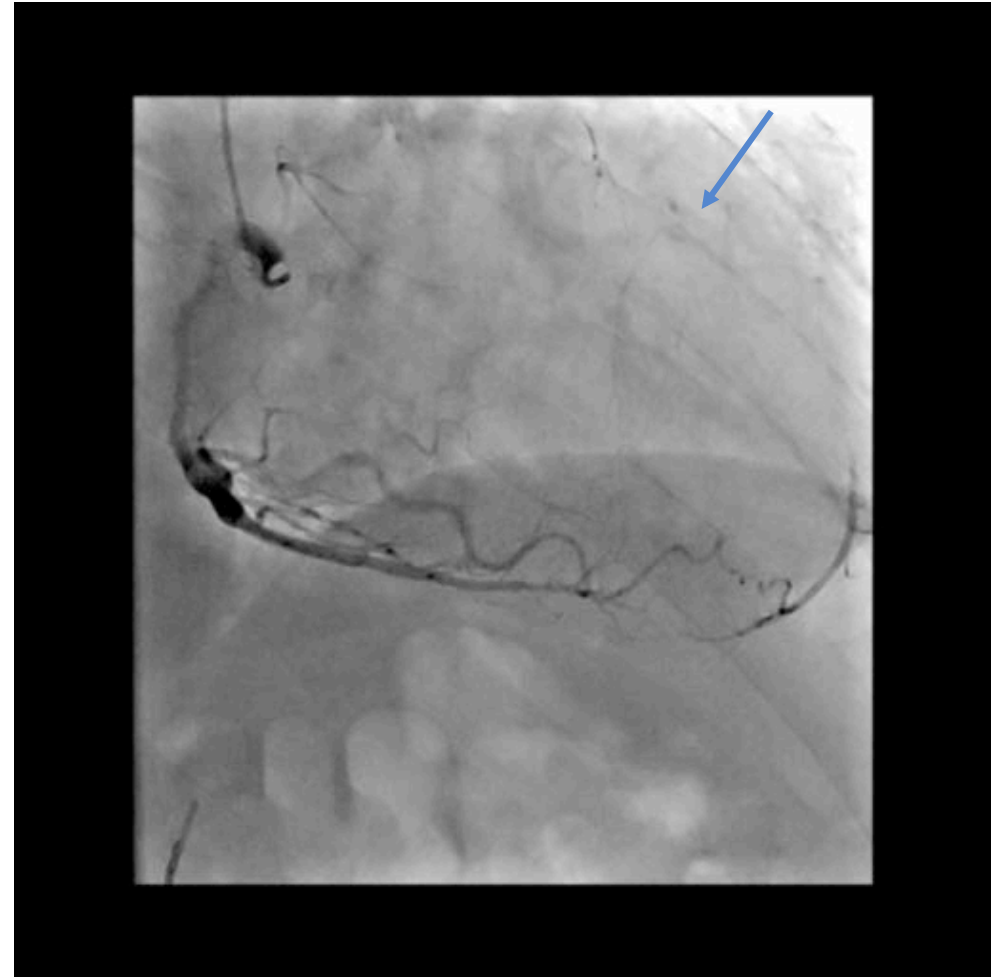
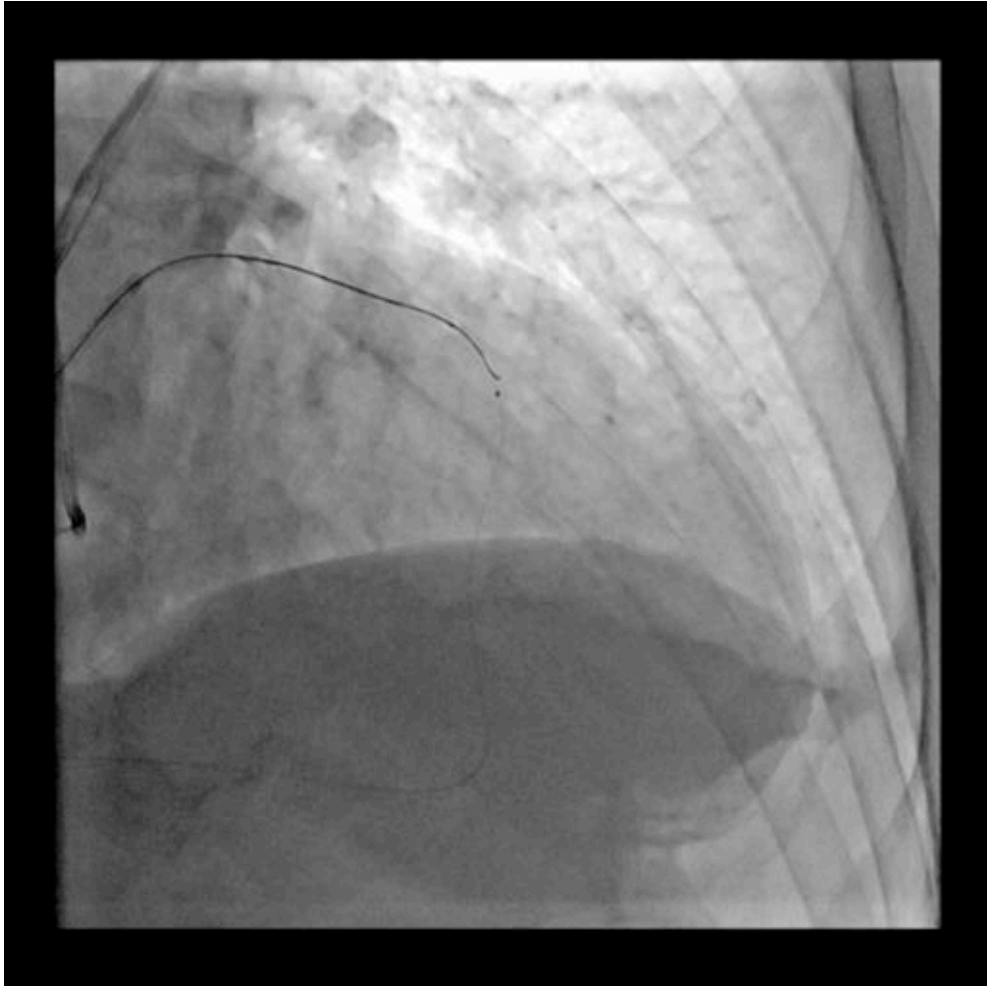


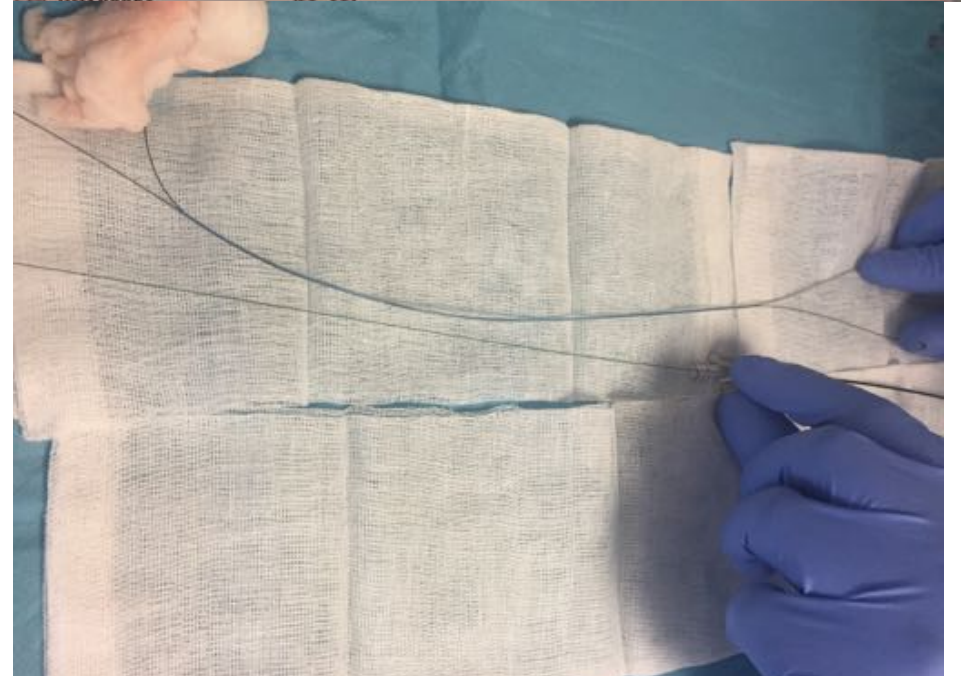
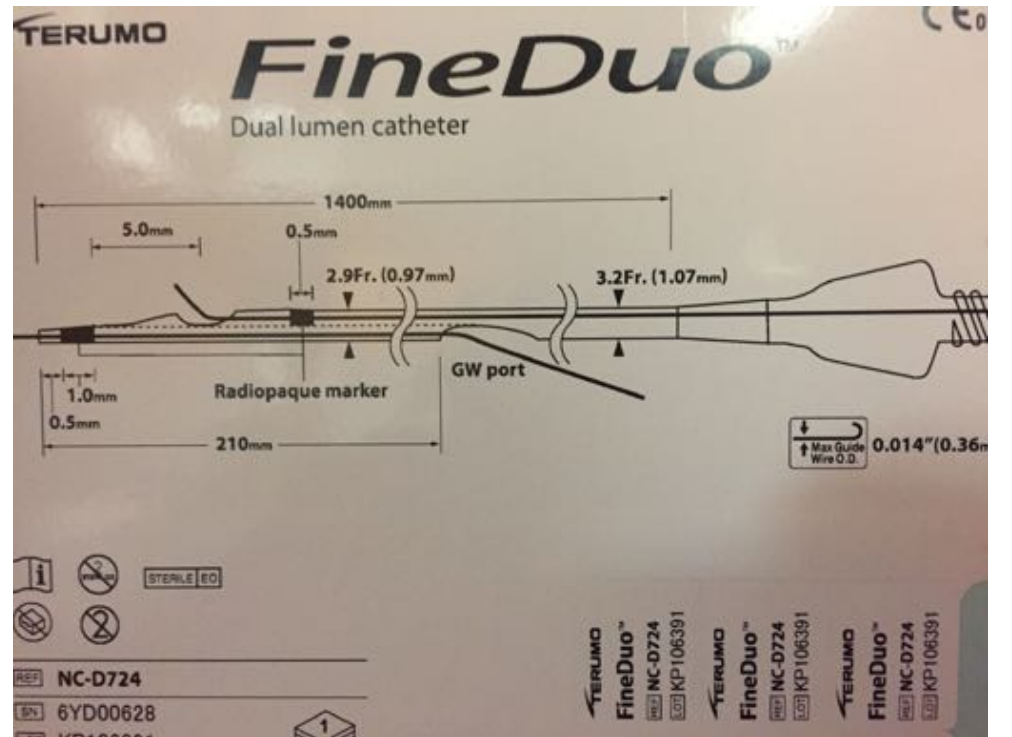
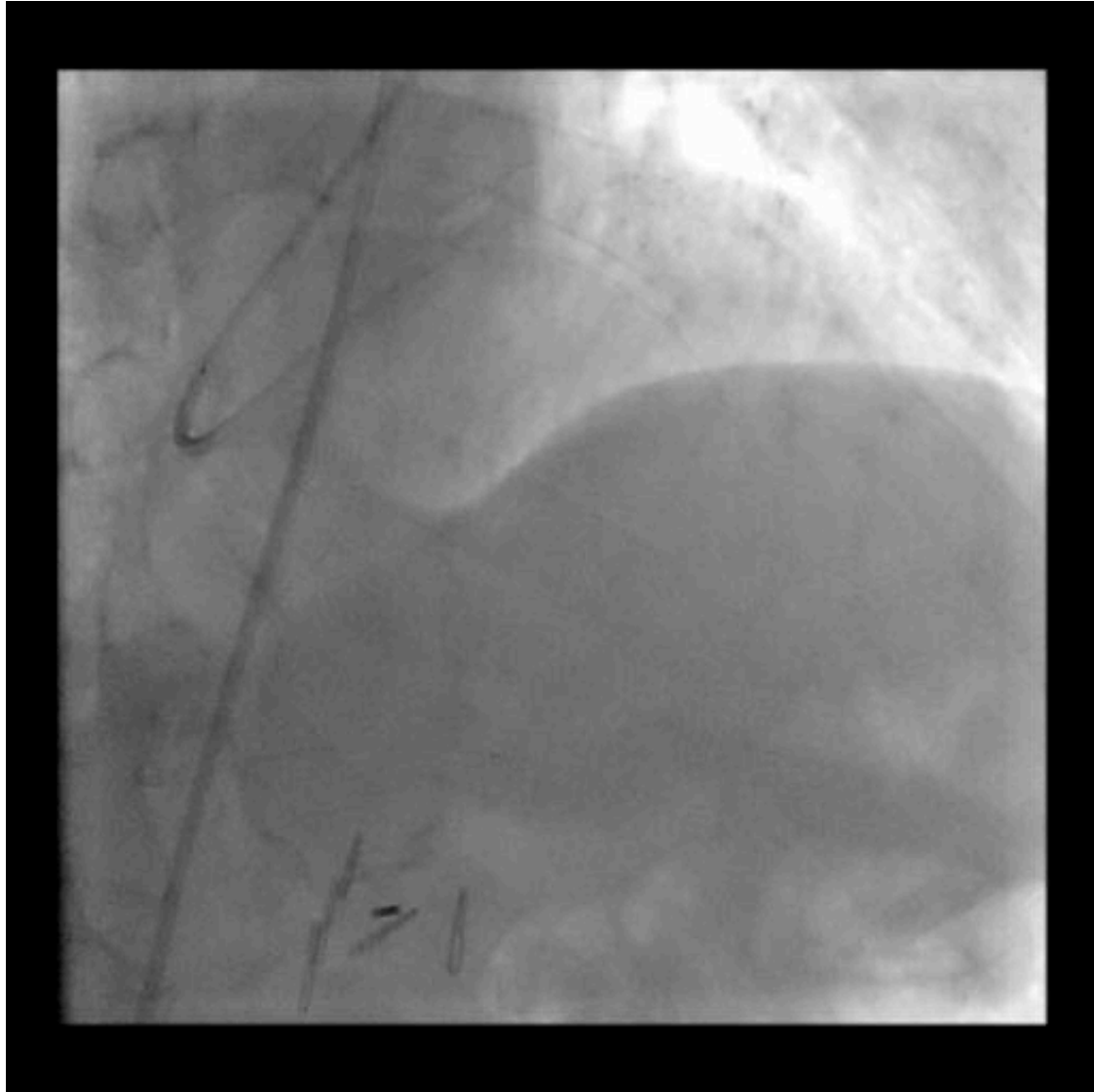
Guide sion black :

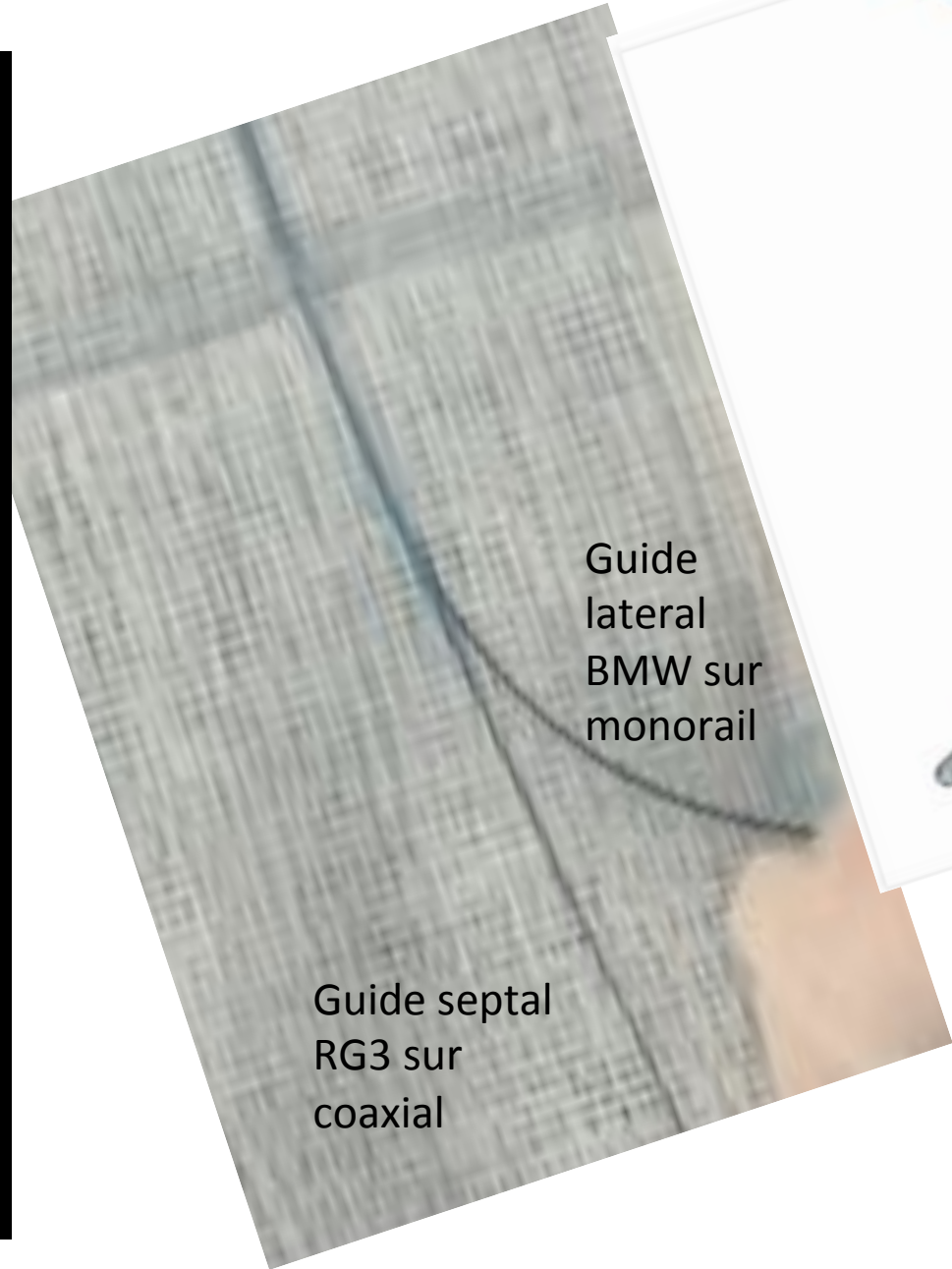
Franchissement retro jusqu'au Cathéter receveur



Mais doute sur double CTO...



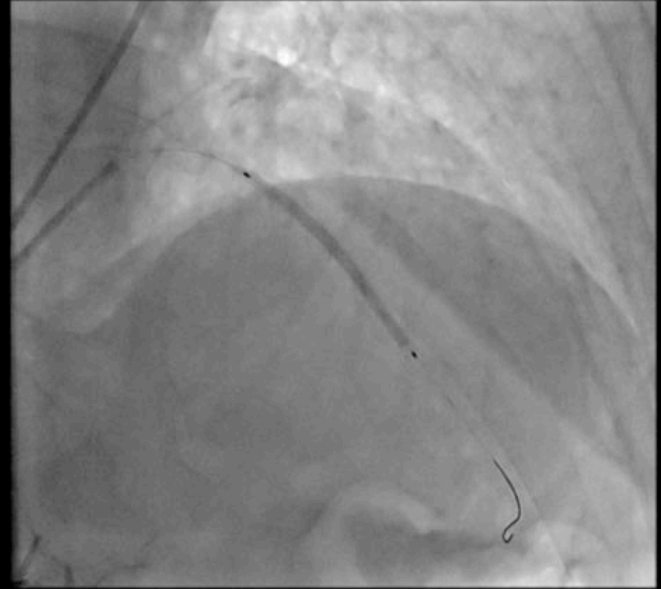


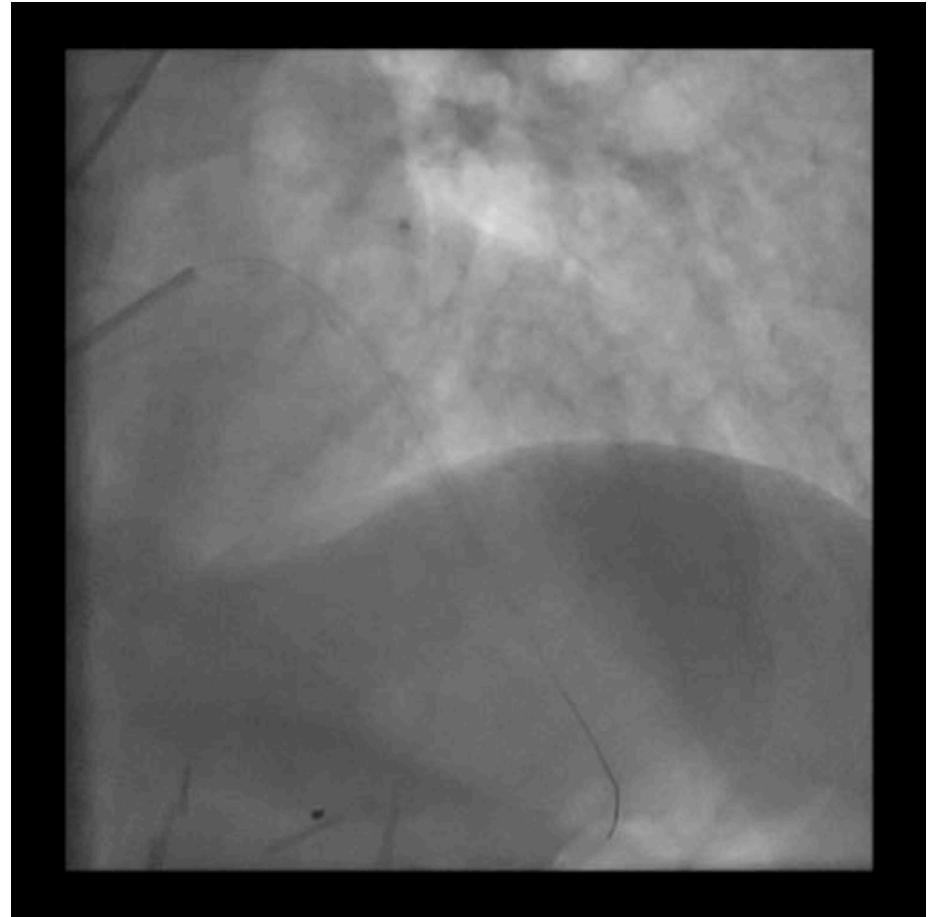
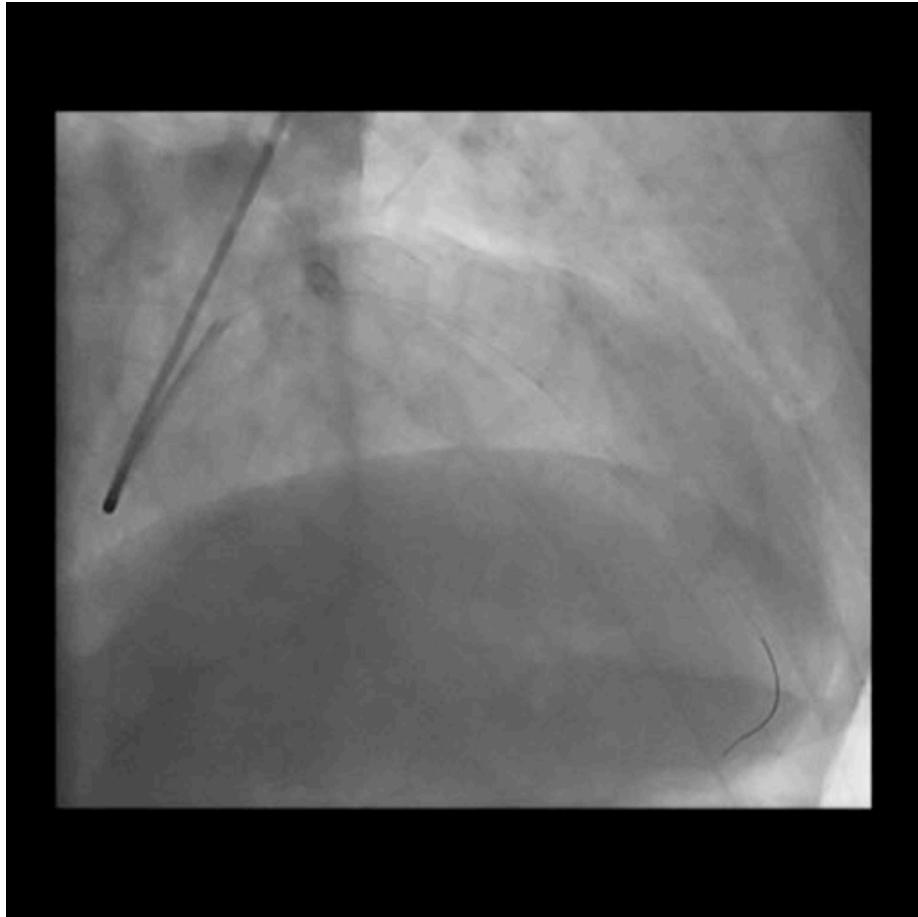


Guide
lateral
BMW sur
monorail

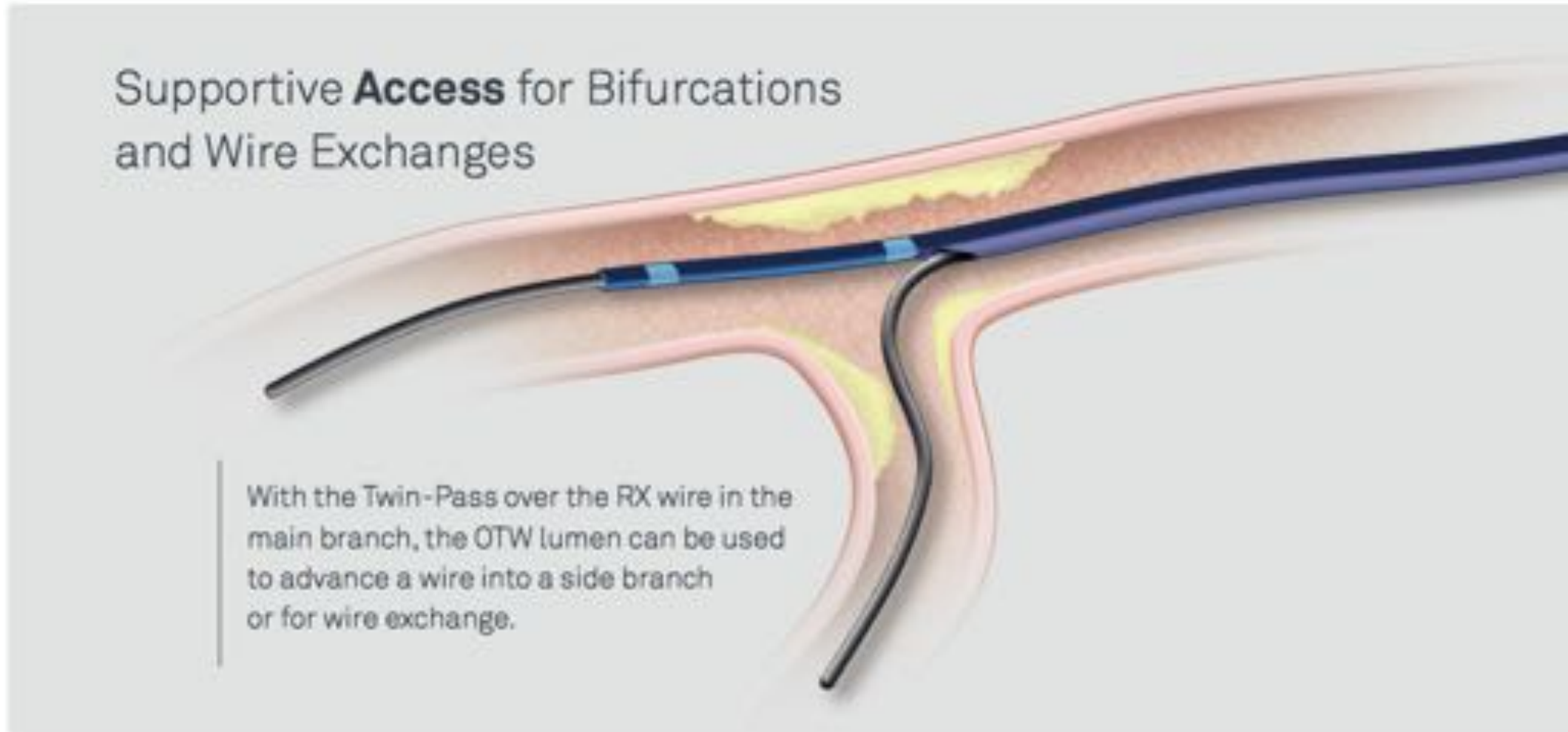
Guide septal
RG3 sur
coaxial





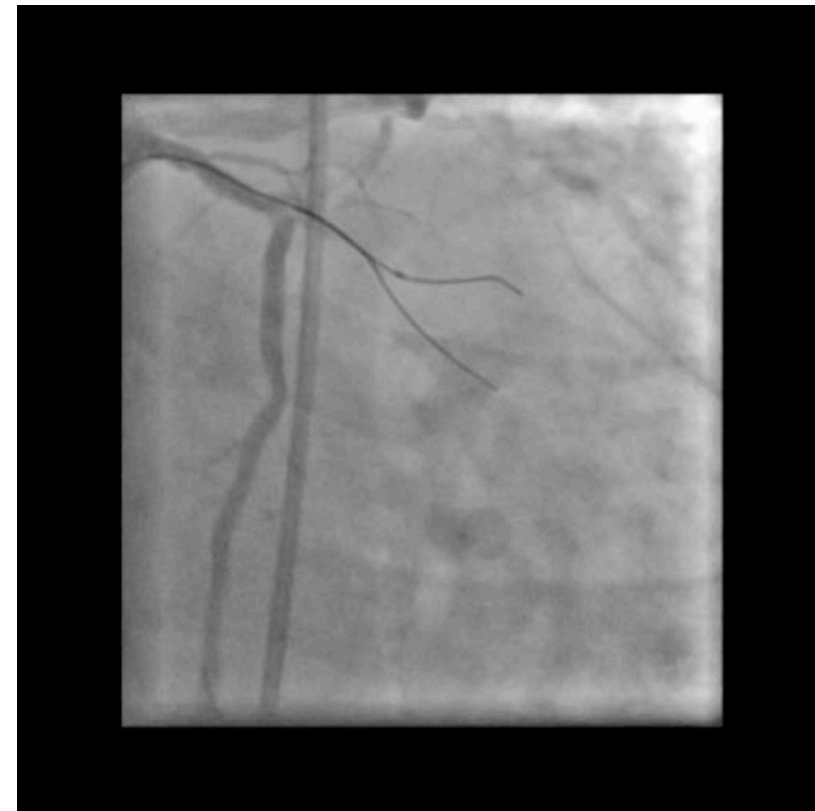
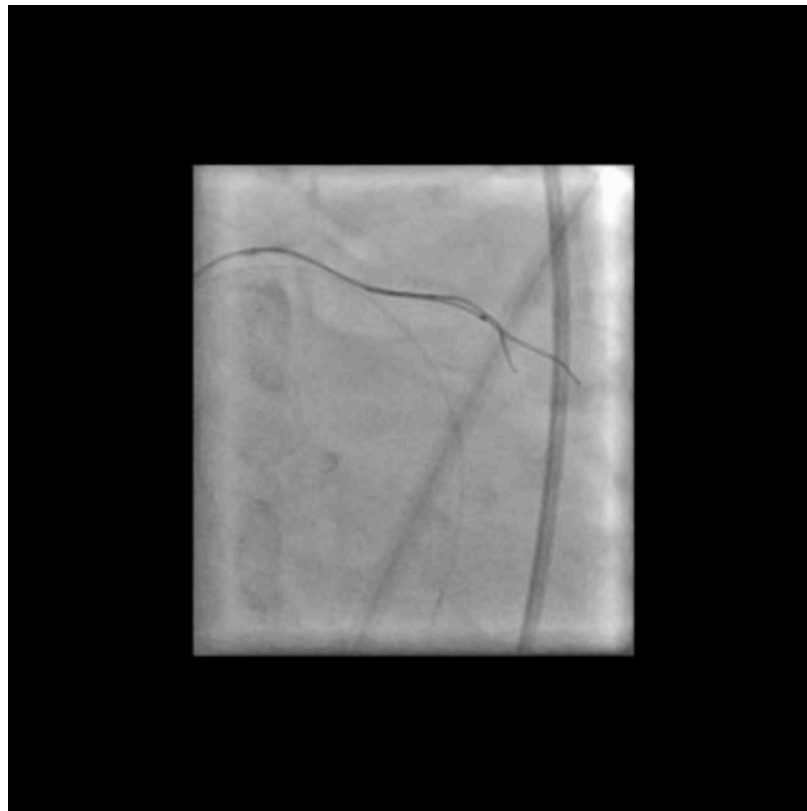
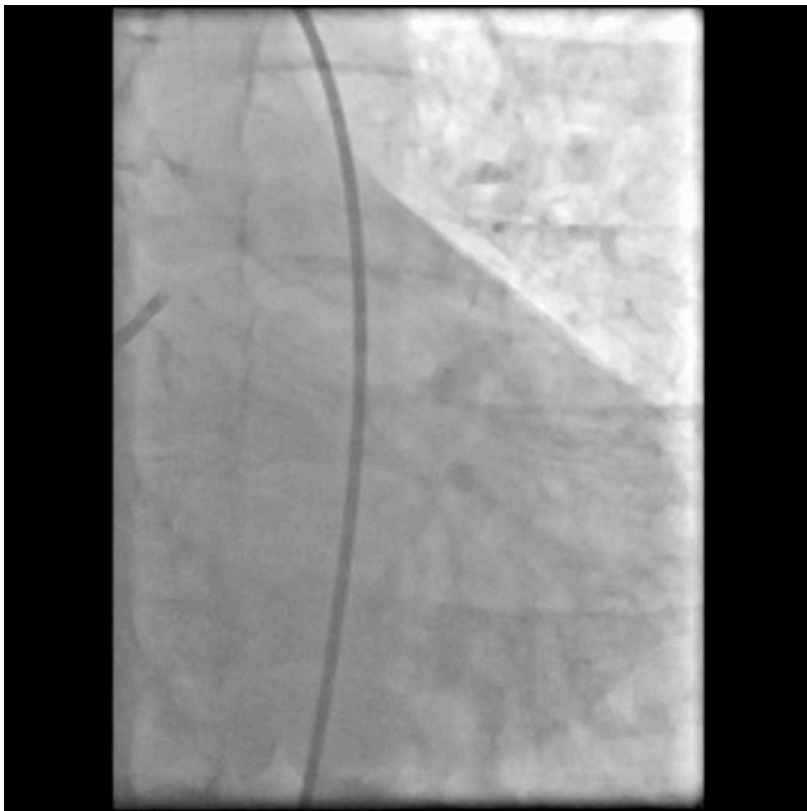


Autres applications du catheter double lumiere

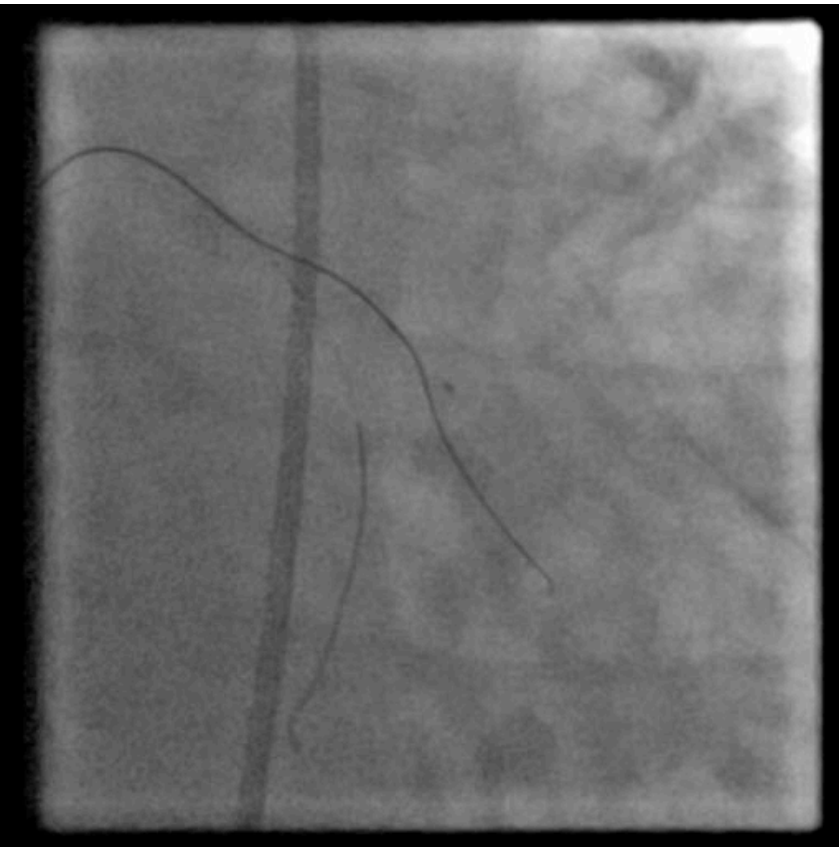


CTO de bifurcation

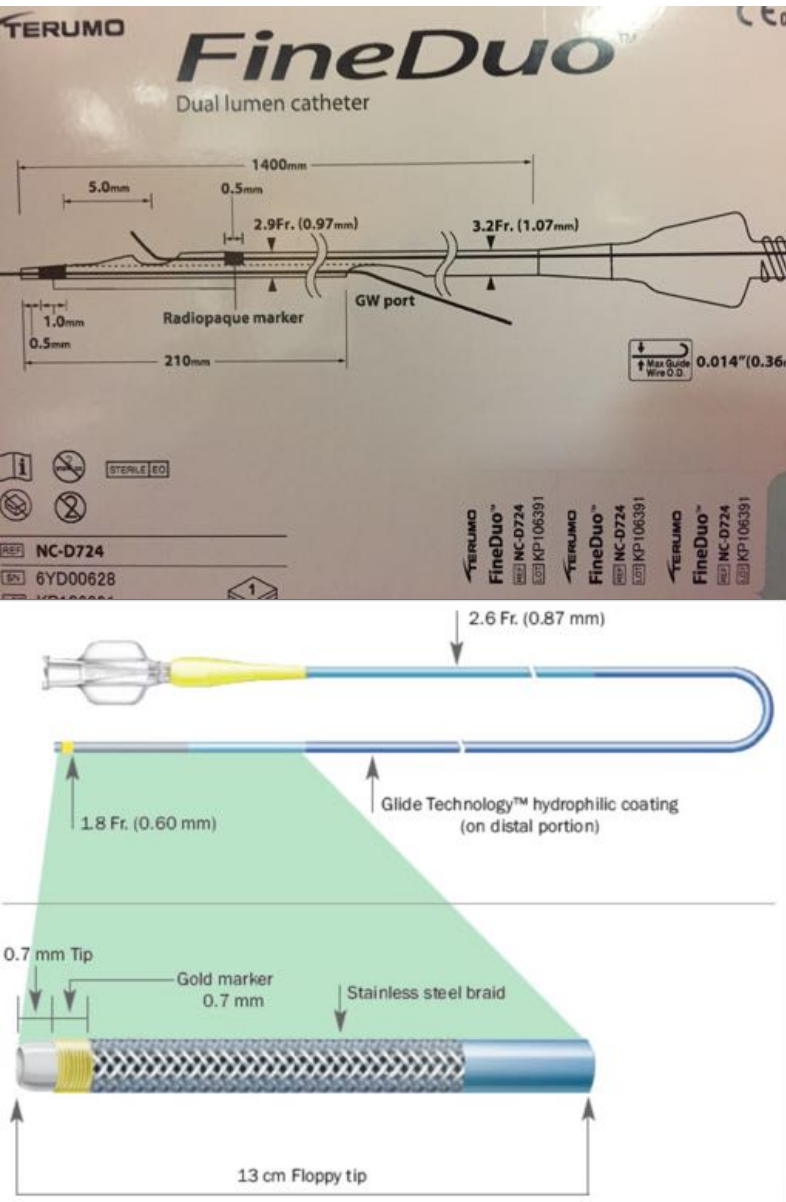
Pas de pb de franchissement mais gestion de bifurcation:
utilisation d'emblée d'un Fineduo



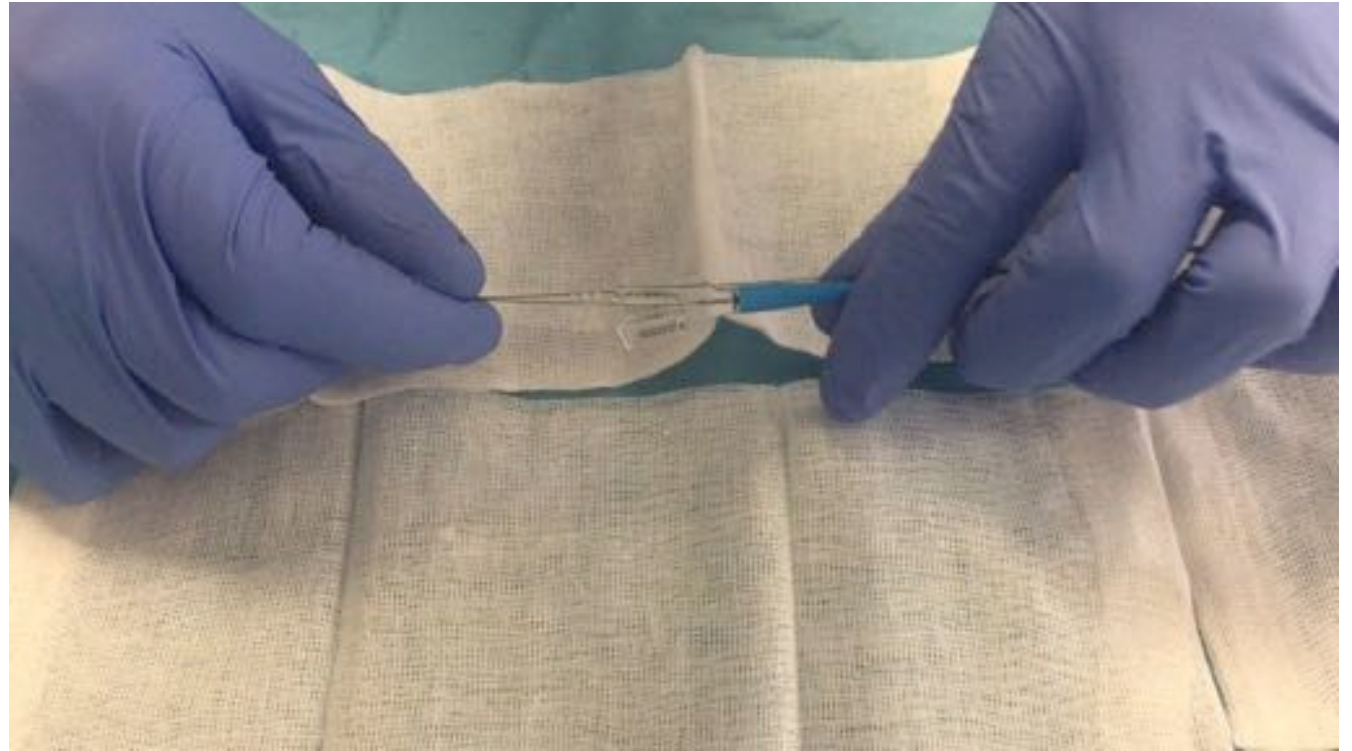
CTO de bifurcation/dissection Réutilisation Fineduo avec échange des guides pour vraie lumière



Profil vs Finecross



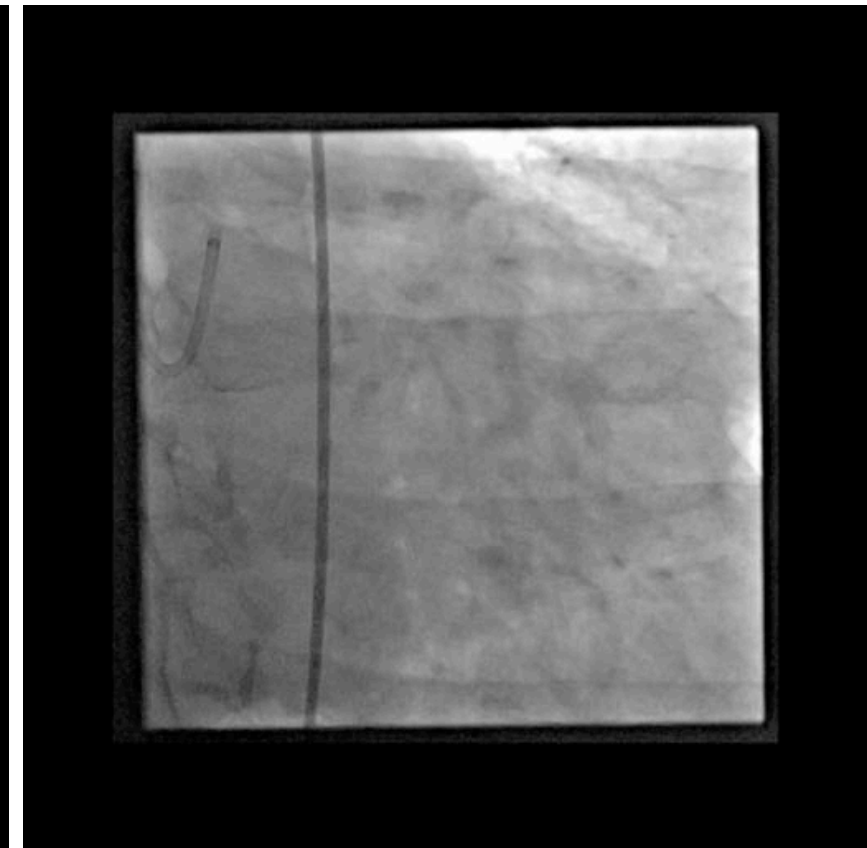
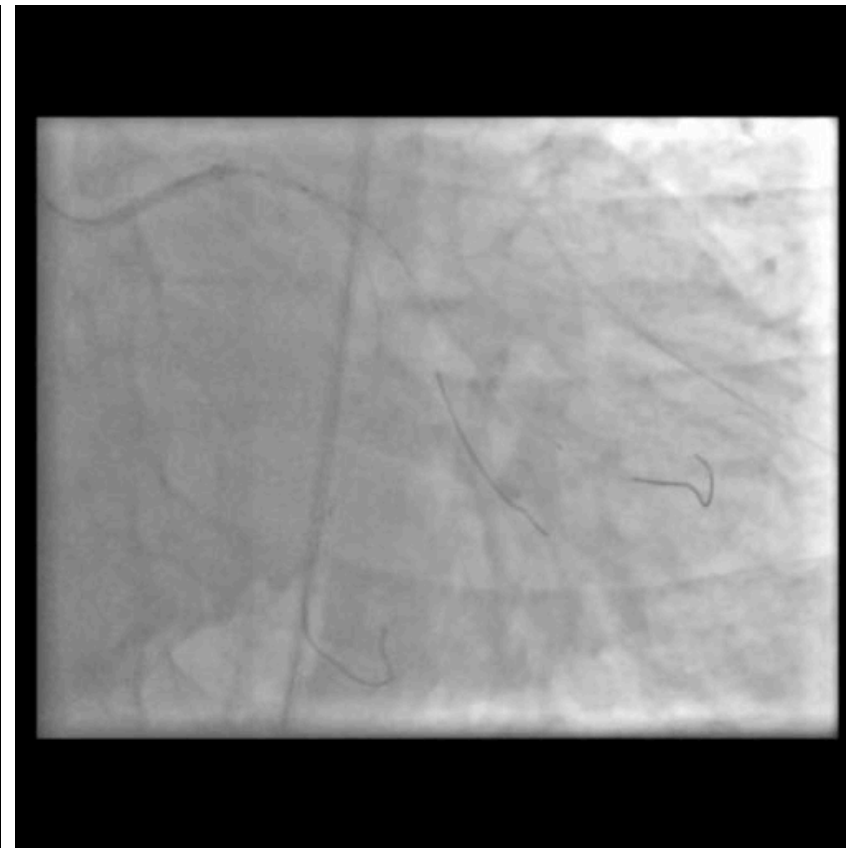
Problème du retrait



- Extension de guide sur partie coaxiale
- **Trapping dans catheter guide**
- (Méthode de Nanto à l'indéflateur)

CTO de bifurcation/dissection

Réutilisation Fineduo avec échange des guides pour vraie lumière



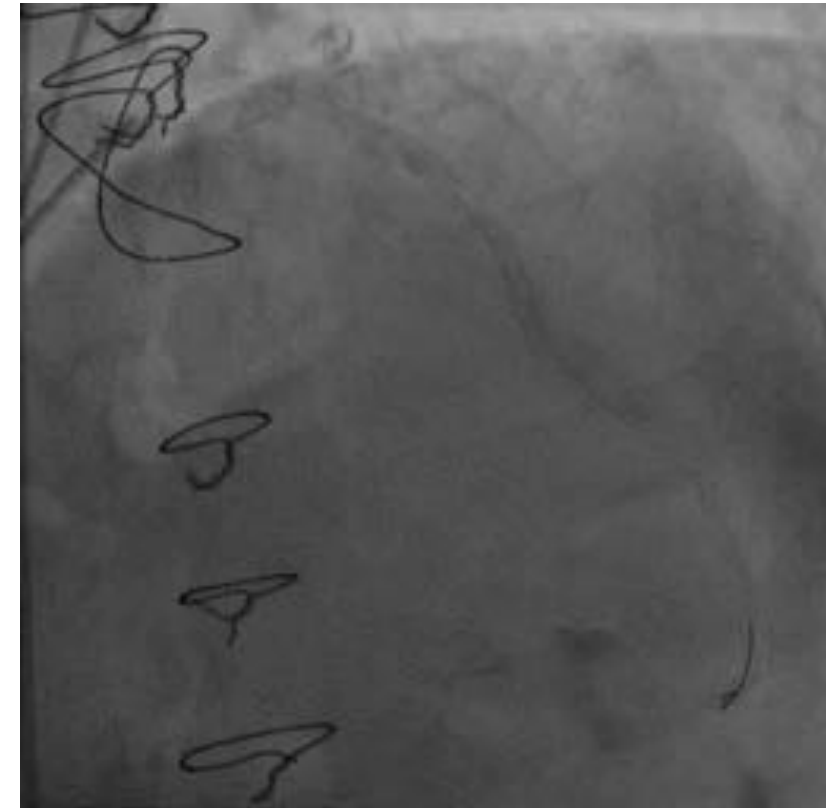
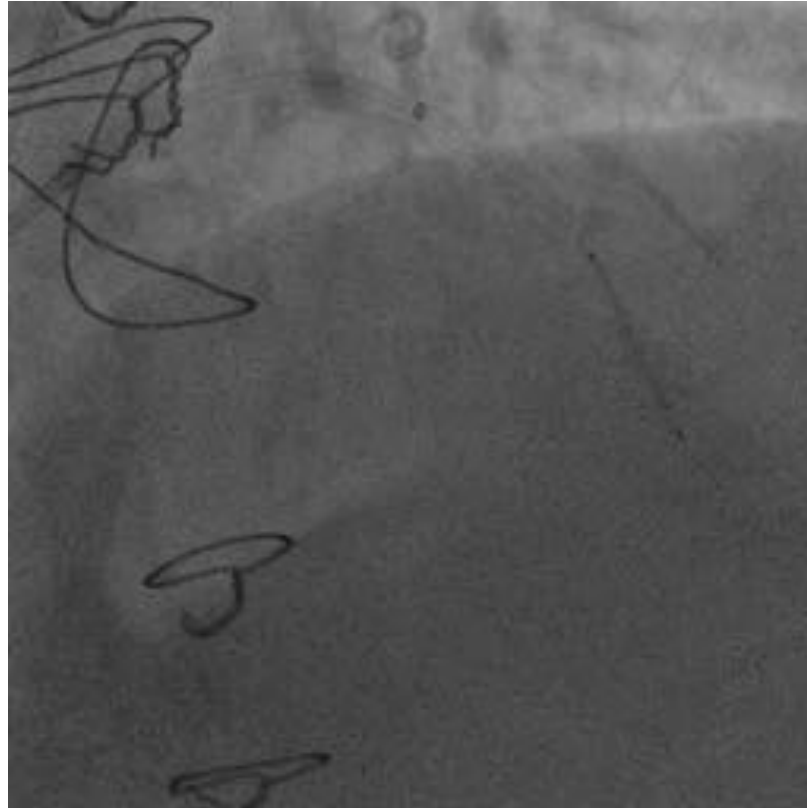
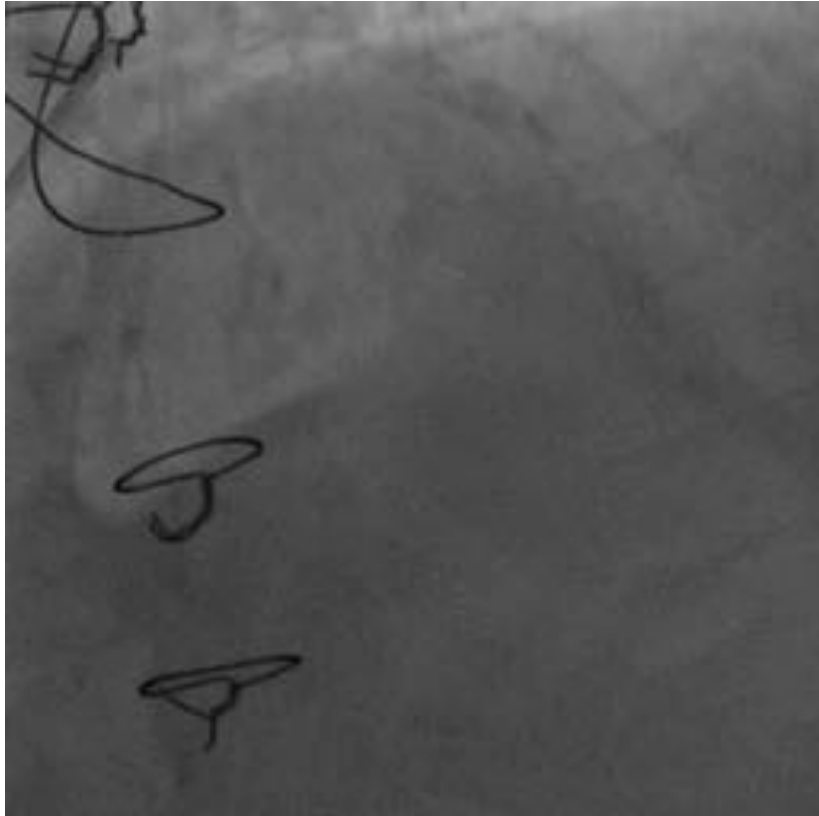
Franchissement de maille de stent : branche fille



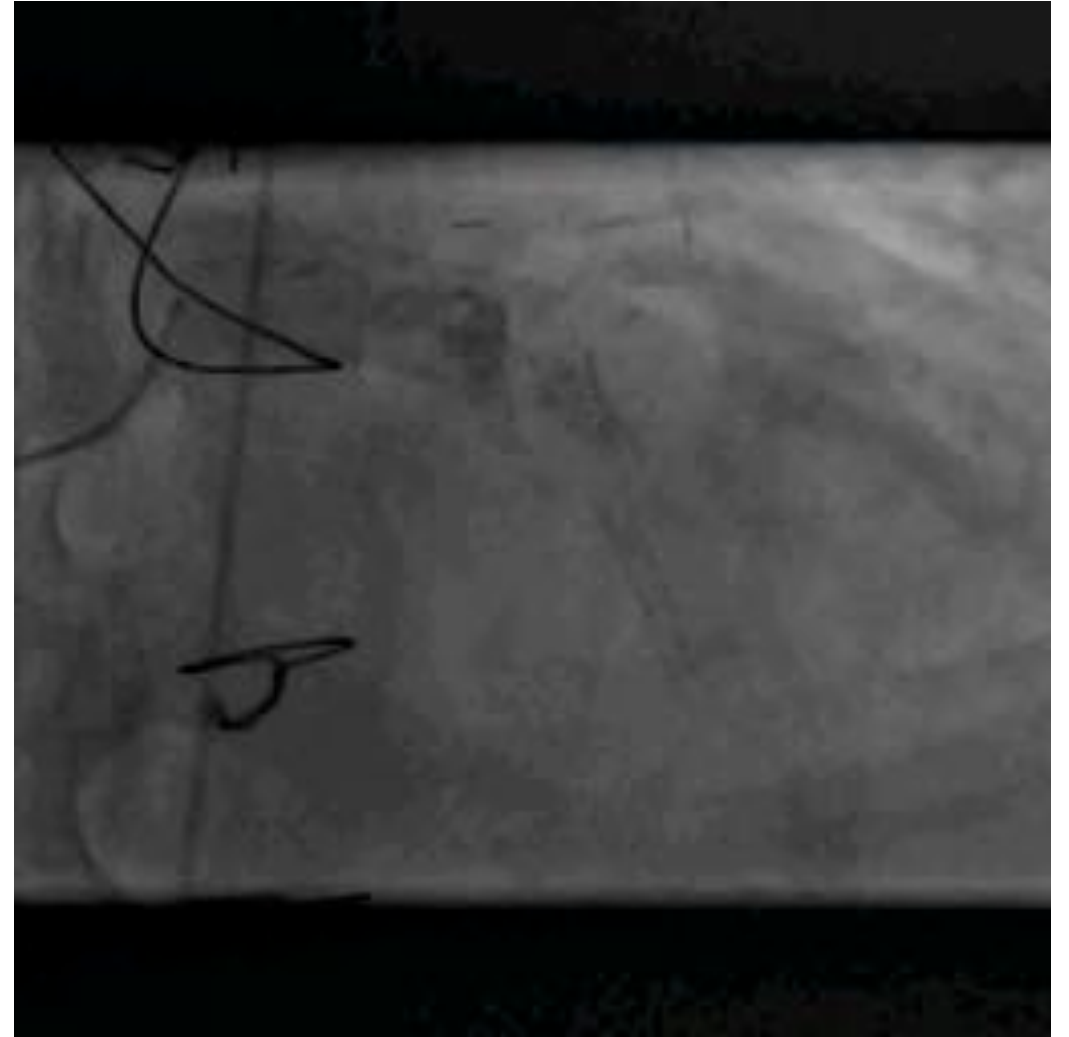
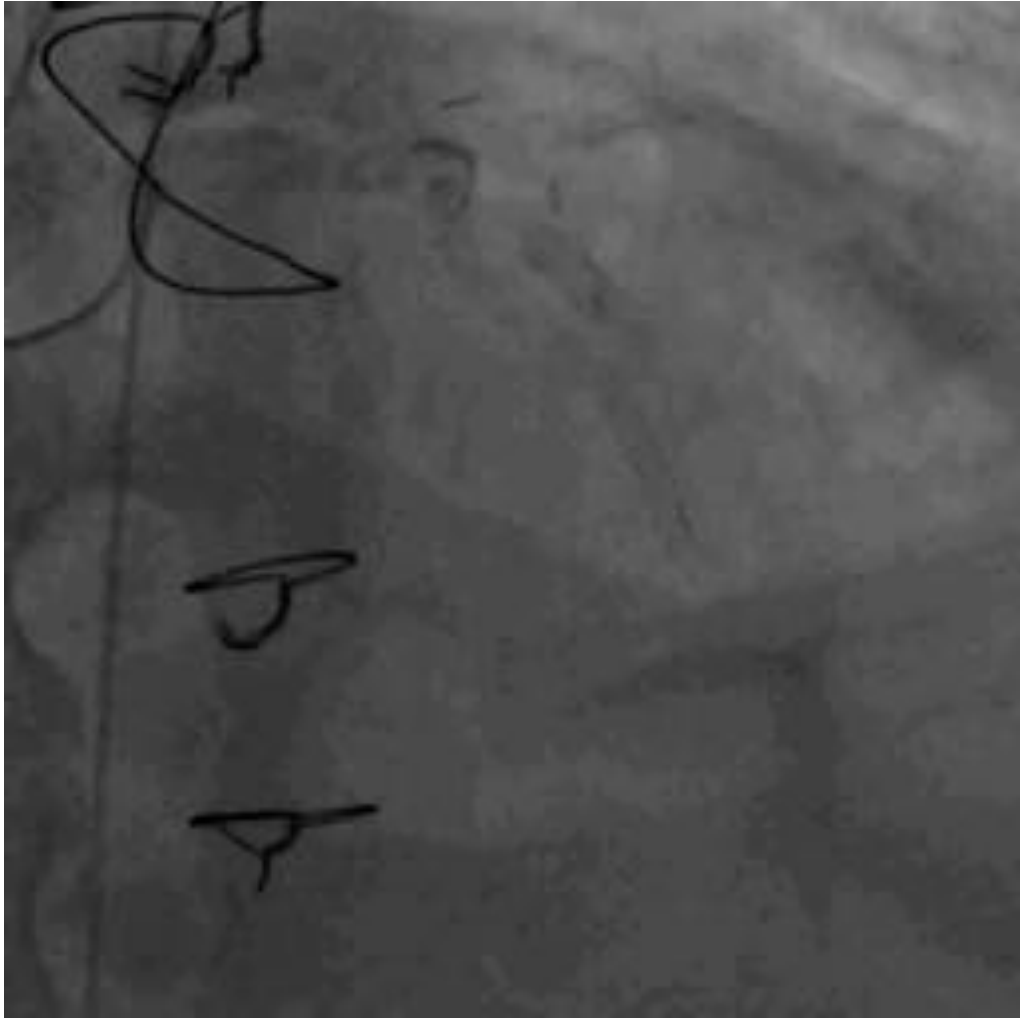
Technique parallele wire en CTO



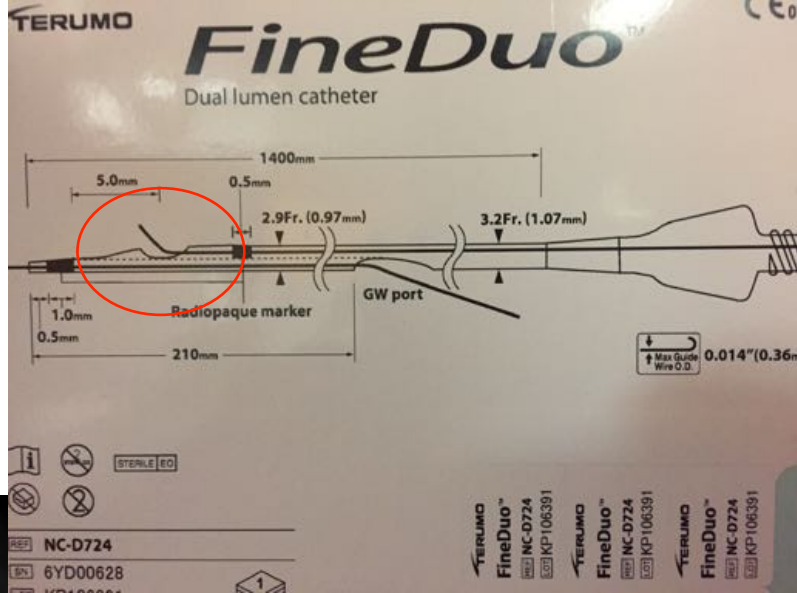
Intérêt dans les anévrysmes coronaires : angulations extrêmes



Courtesy Dr Tron- Pr Durand et Dr Bouhzam (CHU Rouen)



Courtesy Dr Tron- Pr Durand et Dr Bouhzam (CHU Rouen)



Intérêt du Catheter double-lumière

- Indispensable dans sa toolbox
- Multiples usages : bifurcations, CTO, dissection coronaire, anevrysme..
- Intérêt pour essais ou préformations de guides multiples
- Technique d'utilisation type Coaxial