

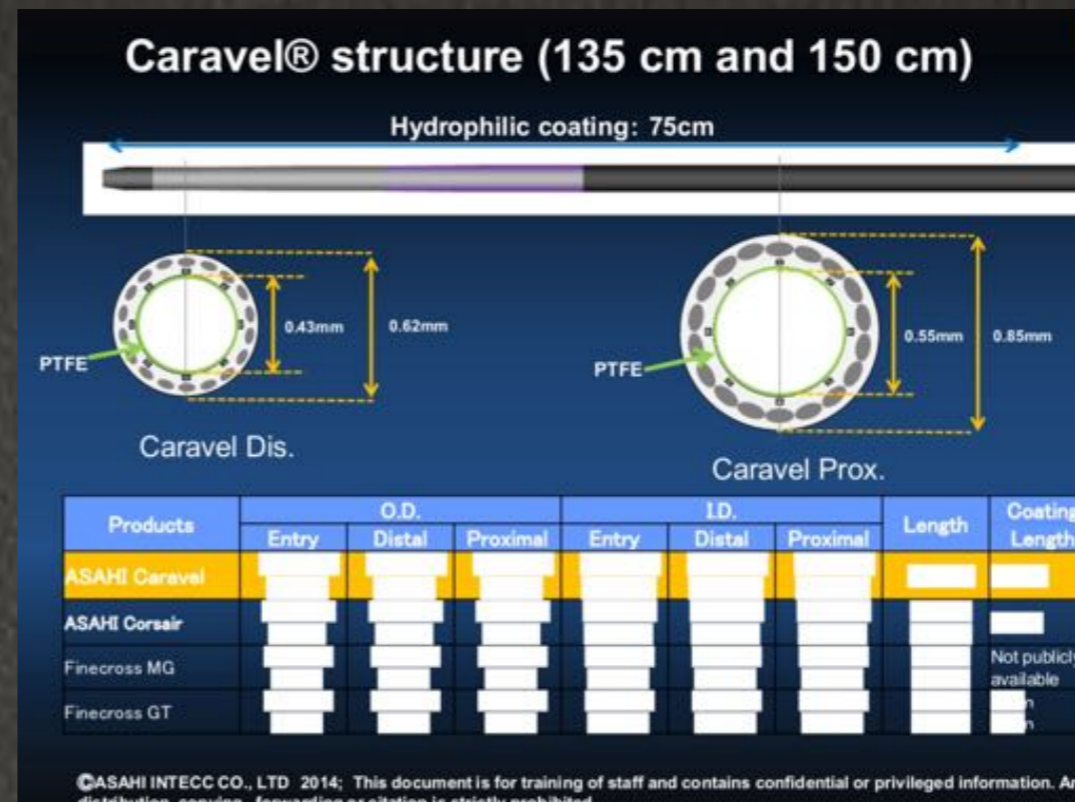
MATERIELS DE CTO ACTUALITÉS ET FUTUR

Dr Alexandre Avran
Institut Arnault Tzanck
Saint Laurent du Var



Les nouveaux microcatheters
Les nouveaux guides
les nouveaux devices
Quel sera notre futur

Les nouveaux Microcatheters

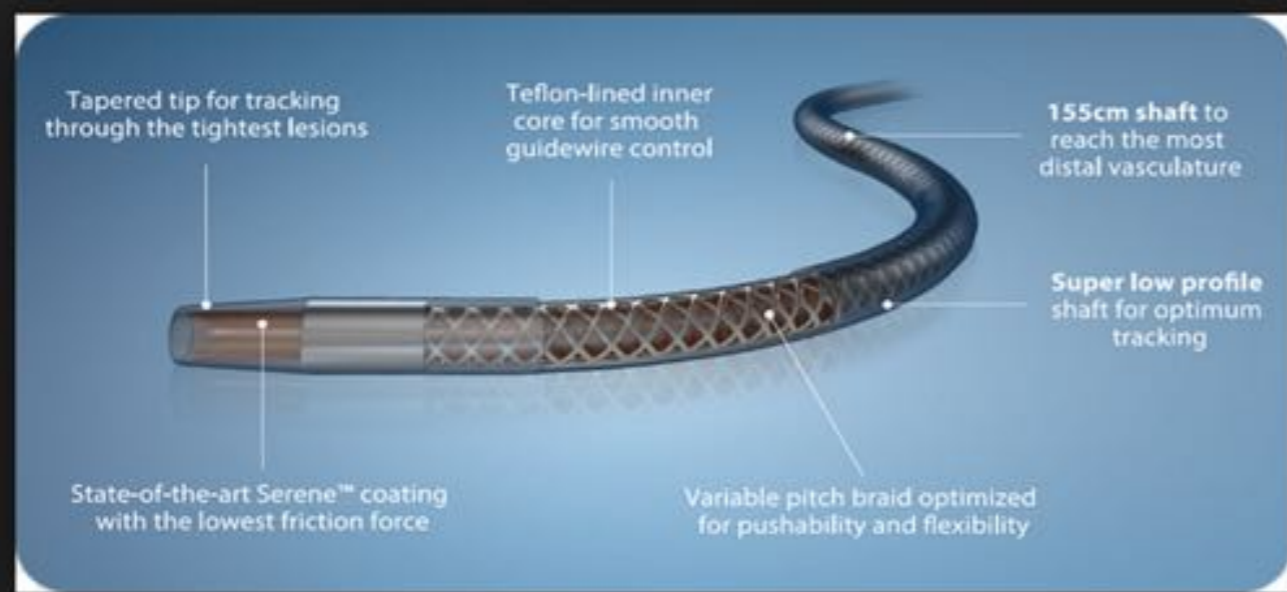


En Pratique:

Anterograde: excellent profil mais peu de support

Rétrograde: Quasi 1er intention pour les epicardiques tortueuses et certaines septales
plus difficile dans lésions calcifiées

Les nouveaux Microcatheters

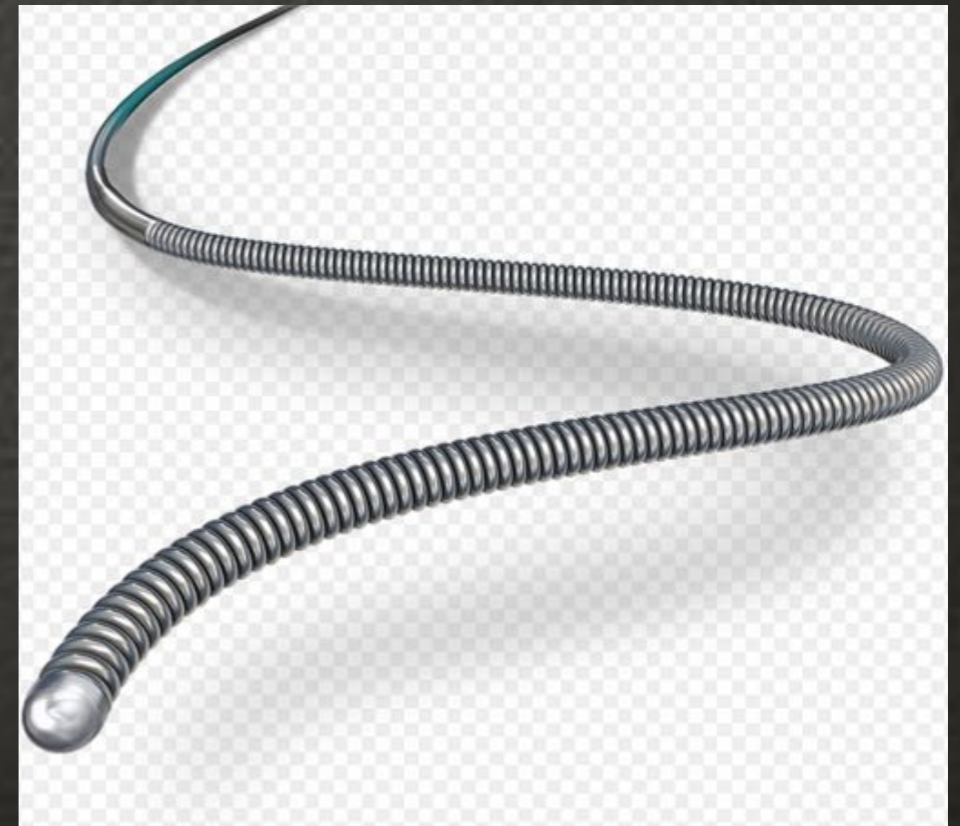


Micro 14:

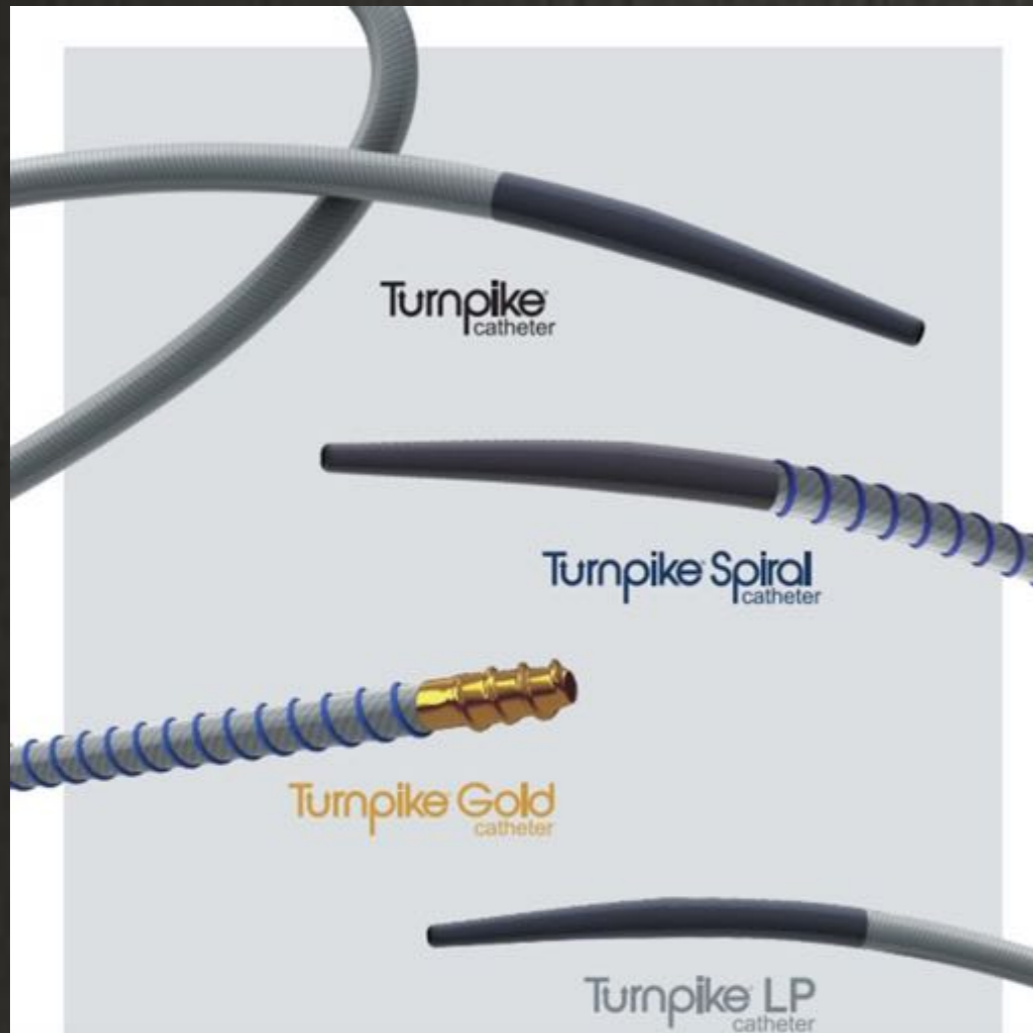
- excellent push en antérograde
- parfois manque de flexibilité en rétrograde

M Cath:

- utilisation uniquement en antérograde
- support et push le plus important du marché au dépend flexibilité



Les nouveaux Microcatheters



La gamme Turnpike:

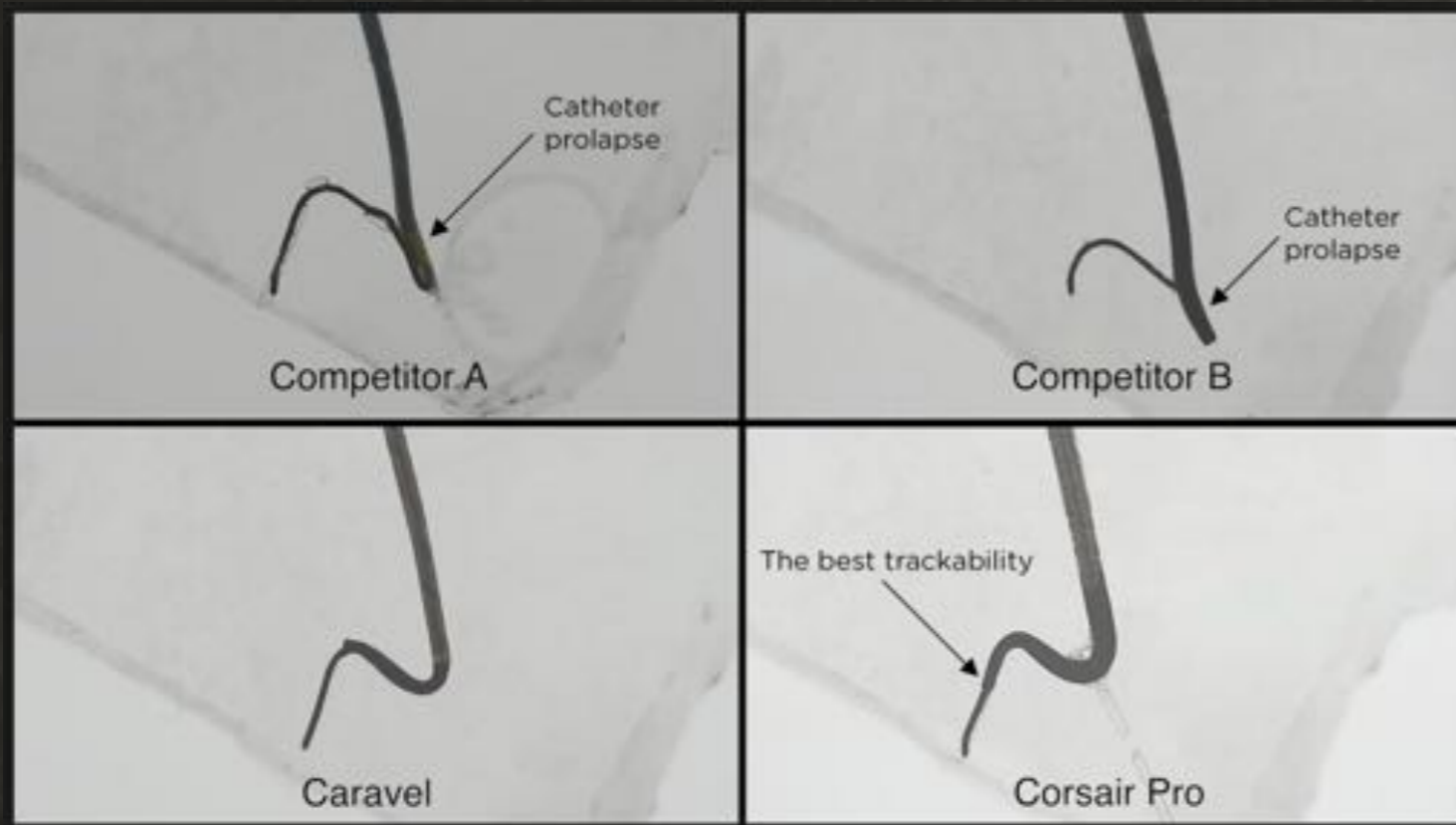
Turnpike classique: bon en anterograde sans calcification
bon en rétrograde

turnpike LP: très bon pour rétrograde septale et épocardique
mais pas de support

Turnpike spirale intérêt pour cap proximale difficile à franchir

Turnpike Gold pour les bijoutiers

Les nouveaux Microcatheters



Vous en rêviez asahi l'a fait

Corsair pro:

le corsair avec toutes ses qualités sans ses défauts

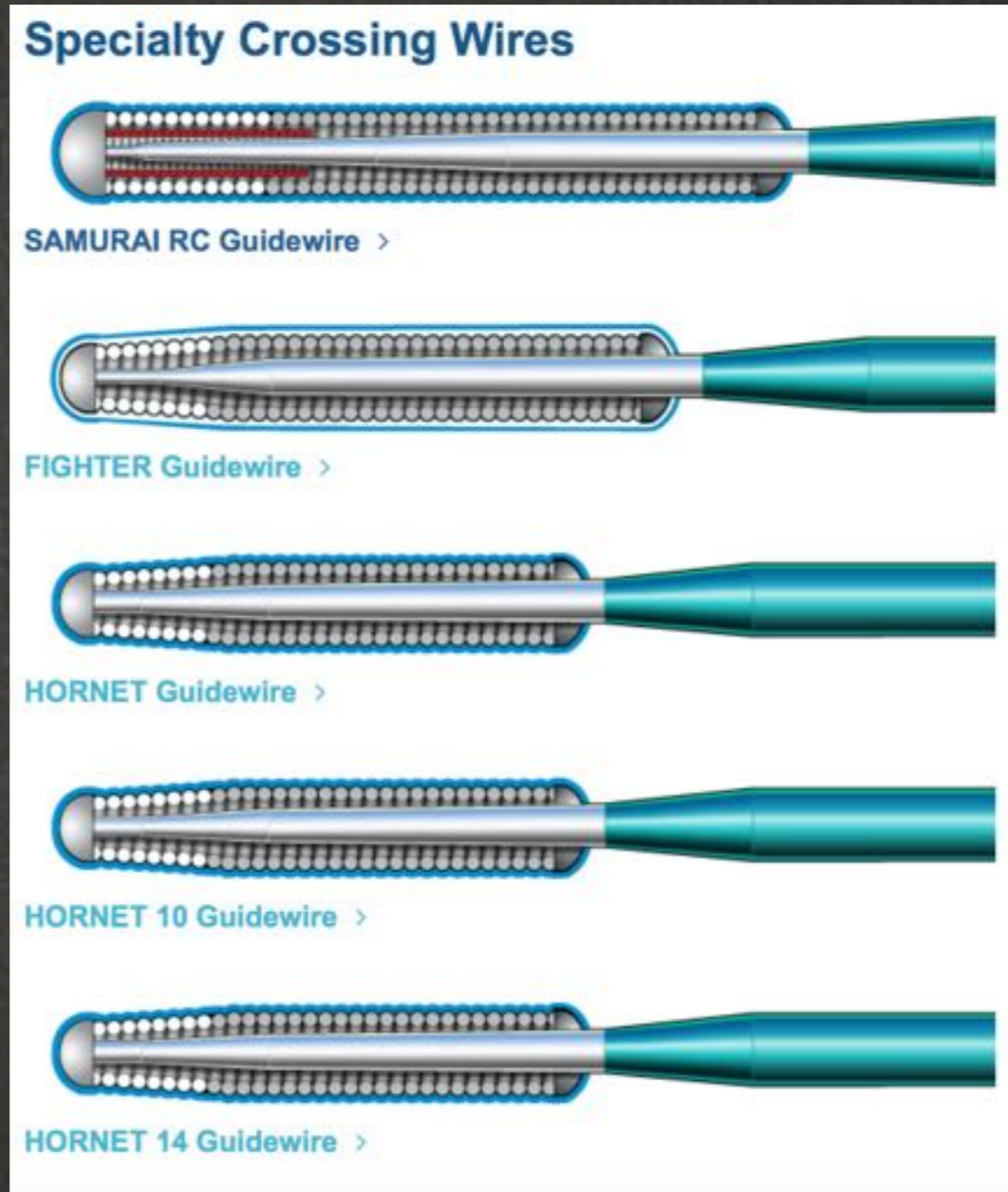
En pratique:
plus résistant, plus efficace
j'espère pas plus chère



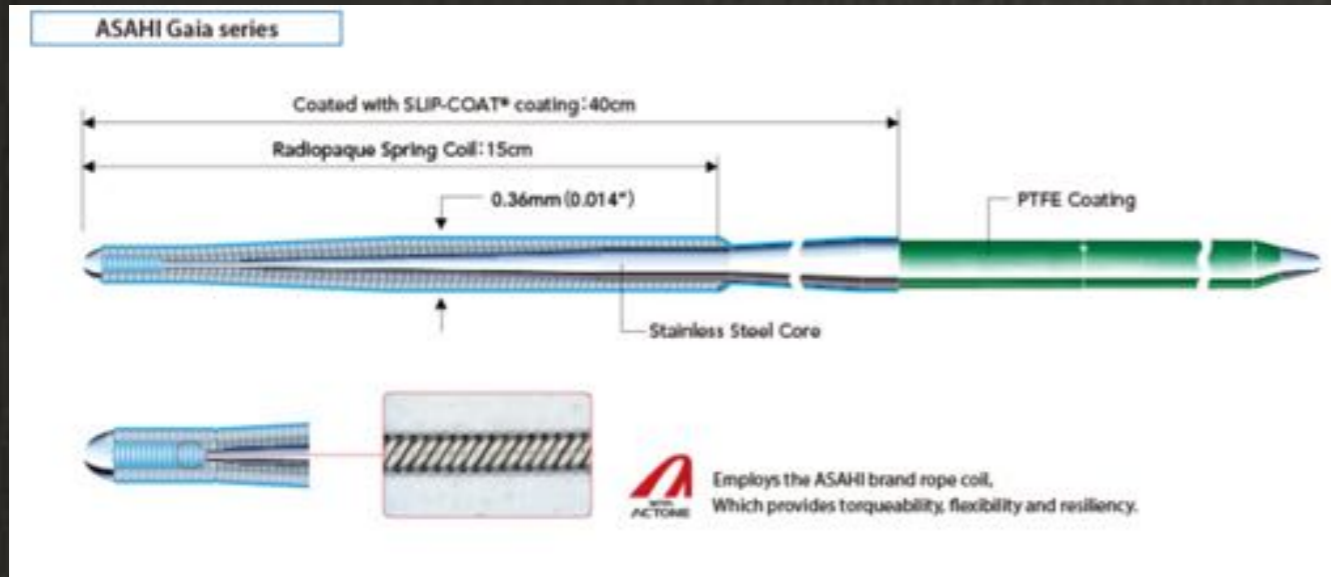
Les nouveaux guides

戦隊

Guides Sentai (Boston)



Les nouveaux guides



ASAHI
SION black
PTCA GUIDE WIRE

Characteristics

- **Polymer Jacket + SION TECC**
Designed with greater lubricity, control and durability.
- **Improved Flexibility**
ASAHI SION black is more flexible than conventional polymer jacket guide wires, for improved safety and vessel trackability.
- **Durable tip for shape retention**
SION TECC is designed to maintain tip shape for vessel selectivity and catheter positioning.

Les nouveaux guides

Suoh-03

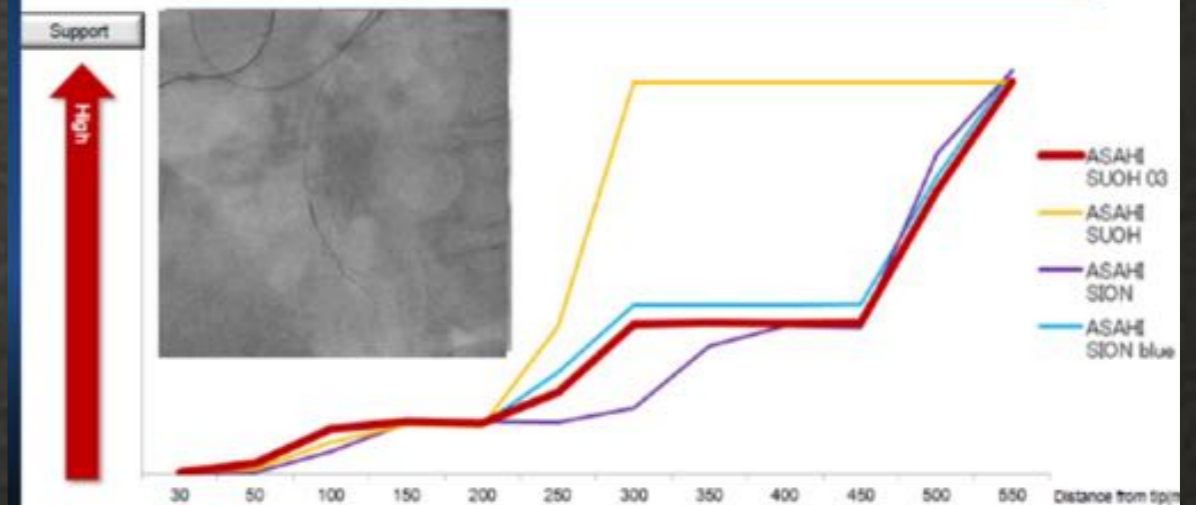


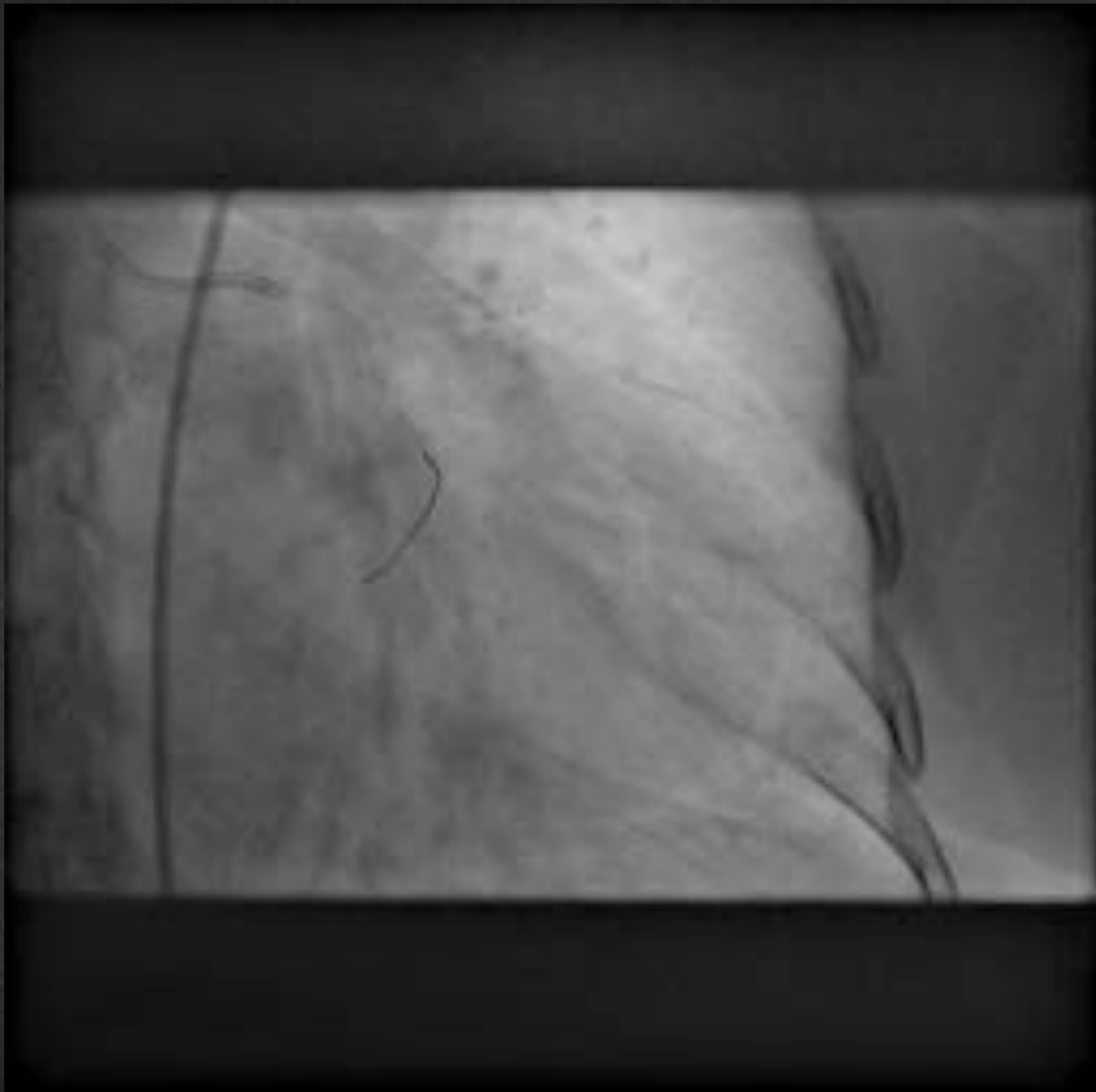
- Coating: Full Hydrophilic Coating 52cm
- Usable Length 190cm
- Coil Length 19cm
- Radiopaque Length 3cm
- Tip Load 0.3gf
- Tip Shape Straight/ Pre-shape

Suoh-03

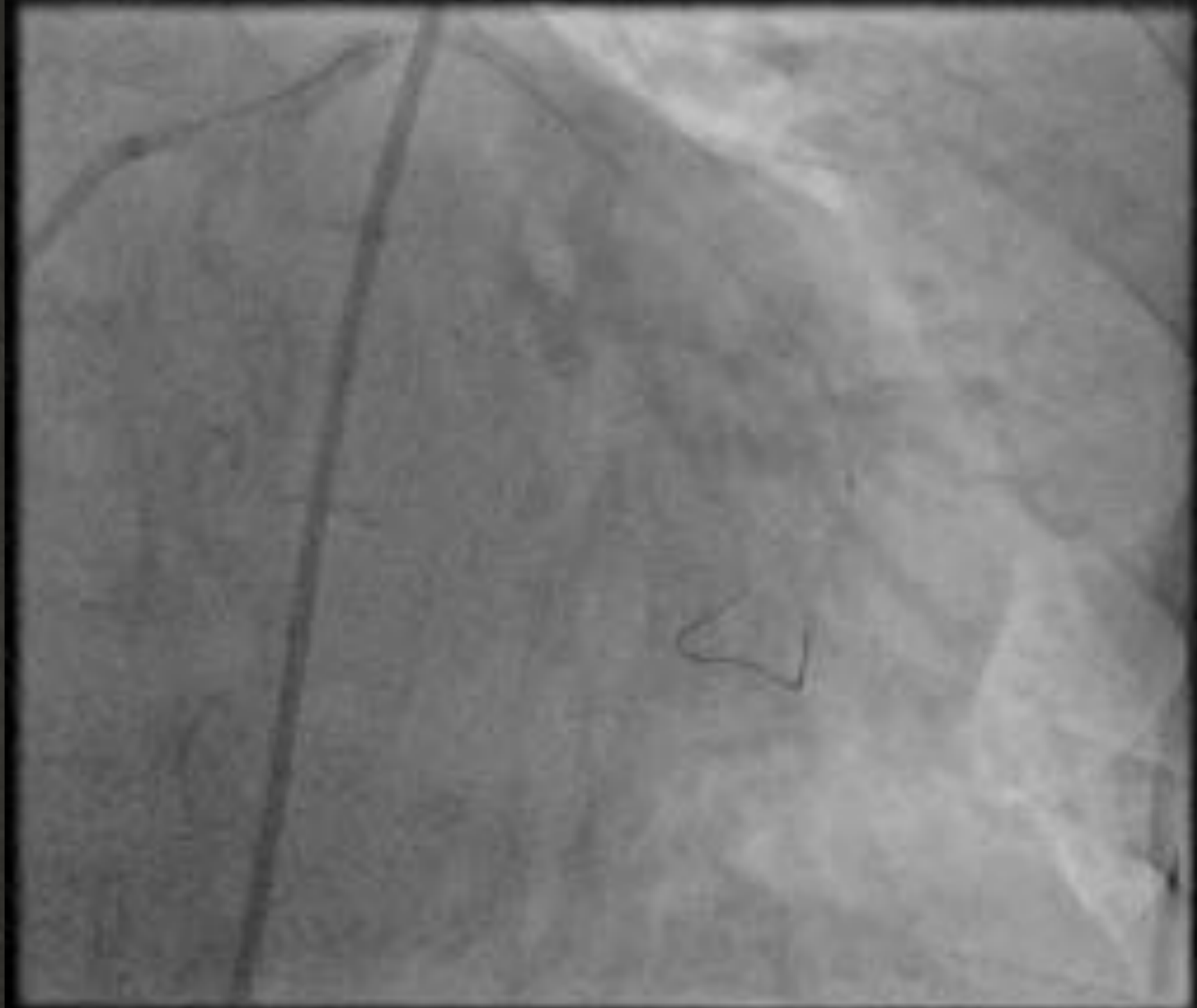
Support

The support of ASAHI SUOH 03 is the same as ASAHI SION blue. In spite of high flexibility, ASAHI SUOH 03 has enough support.











Et Demain....



Le futur proche

ASAHI Gaia next

CTO guide wire

- New generation of Gaia Family
- More torquable and penetrating power
- 3 different stiffness
 - Gaia Next 1 st
 - Gaia Next 2 nd
 - Gaia Next 3 rd
- Specifications finalized



- Next generation Gaia NEXT wire technology offers handling and performance characteristics similar to Gaia 2nd 0.014" diameter guidewires.
- Unique polymer structure provides insulation to ensure safe delivery of RF energy to treatment site for creation of a channel in CTO.

Le futur plus éloigné

Les guides au plasma

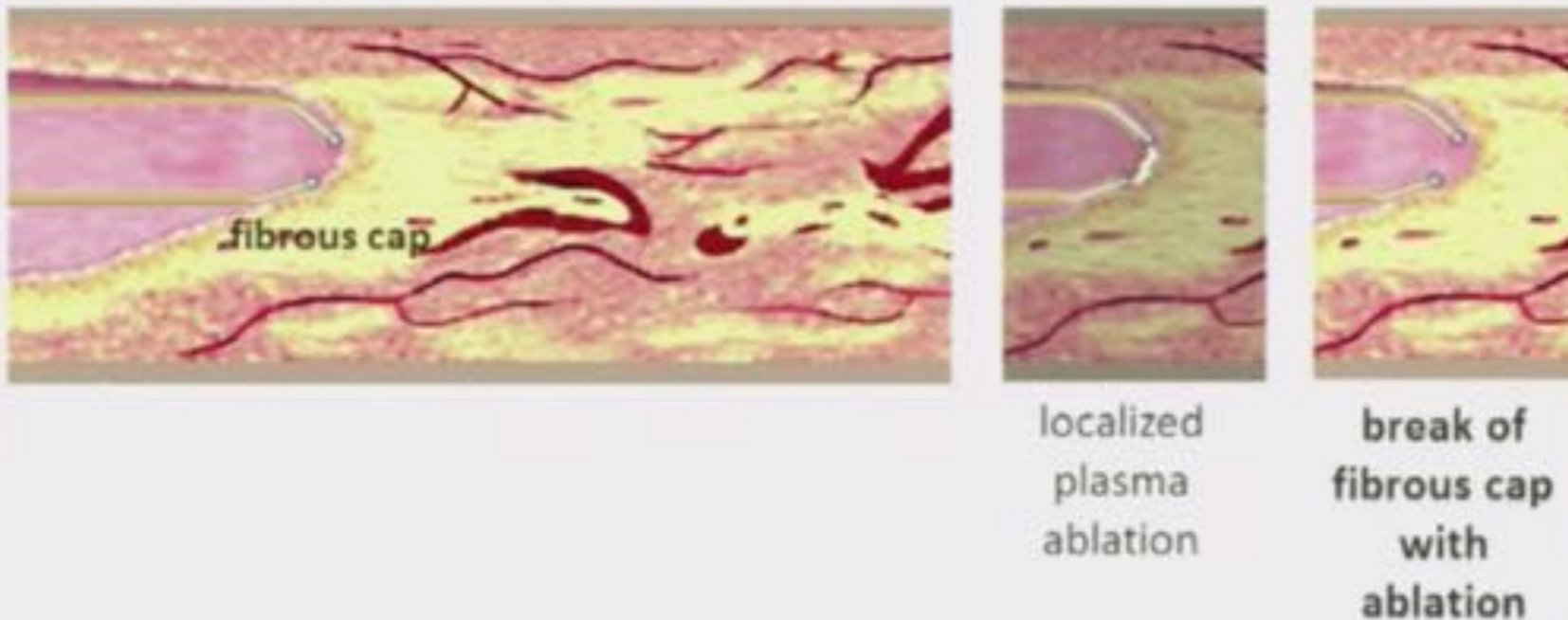


RetroVascular, Inc.

- The PlasmaWire System consists of an RF Generator (RFG), Connector Cable and two 0.014" RF wires (PlasmaWire).
- Two, independently steerable PlasmaWires act as electrodes to form a bipolar arrangement for precise directional ablation.
- RF energy is delivered to the PlasmaWire in "packets" of short pulses to minimize tissue injury while creating plasma between the two wire tips.
- Created channel allows for subsequent CTO crossing and treatment with DES.

2 possibles indications

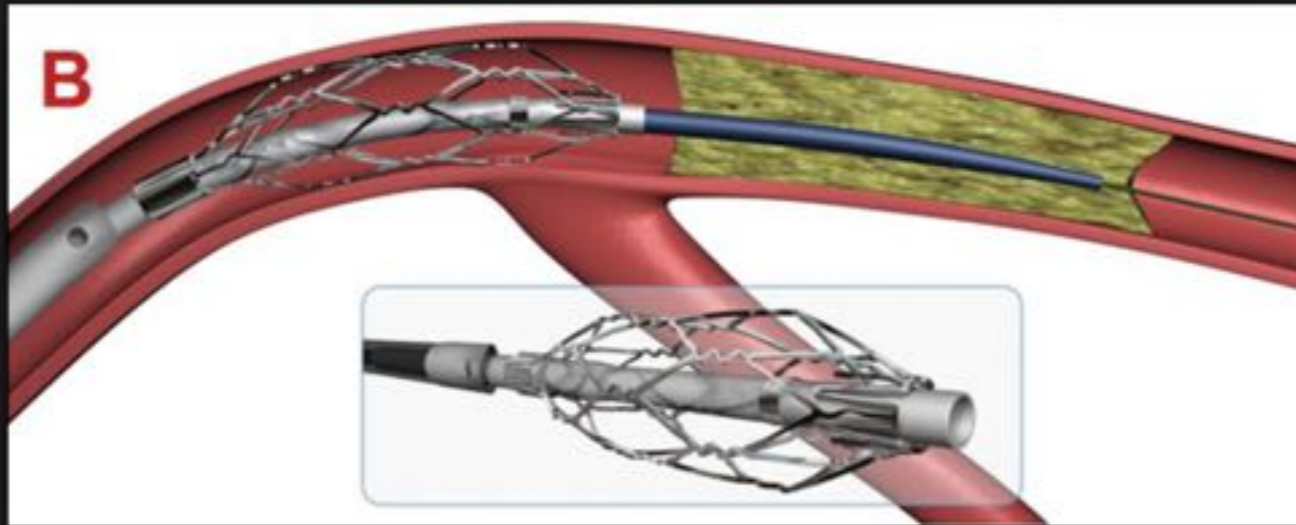
Ablation of proximal fibrous cap



Retrograde re-entry with or w/o calcium ablation



Nouveaux outils

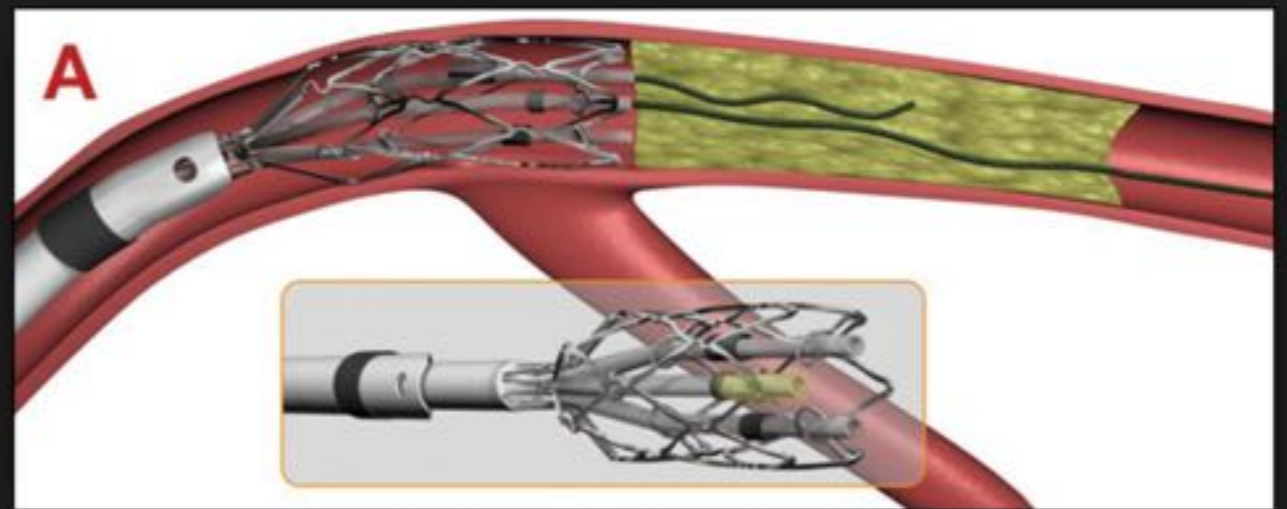


Centercross indications:

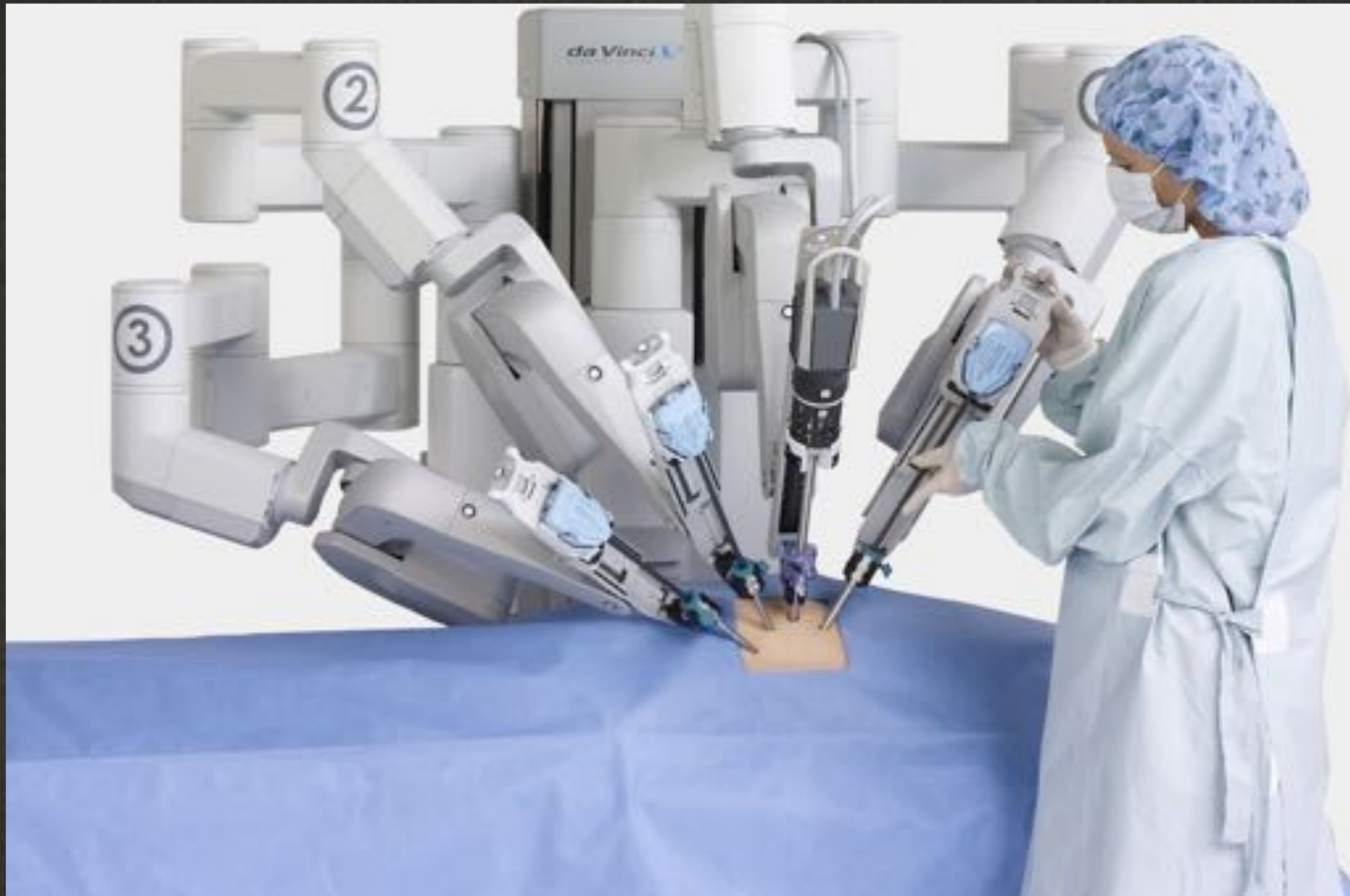
- cap proximale non franchissable
- centrer la ponction initiale

Multicross indication:

- // wire technique



Conclusion



Merci