



Anomalies de connexion des artères coronaires chez l'adulte
(ANOCOR)

Cathétérisme difficile de la coronaire droite : pensez ANOCOR

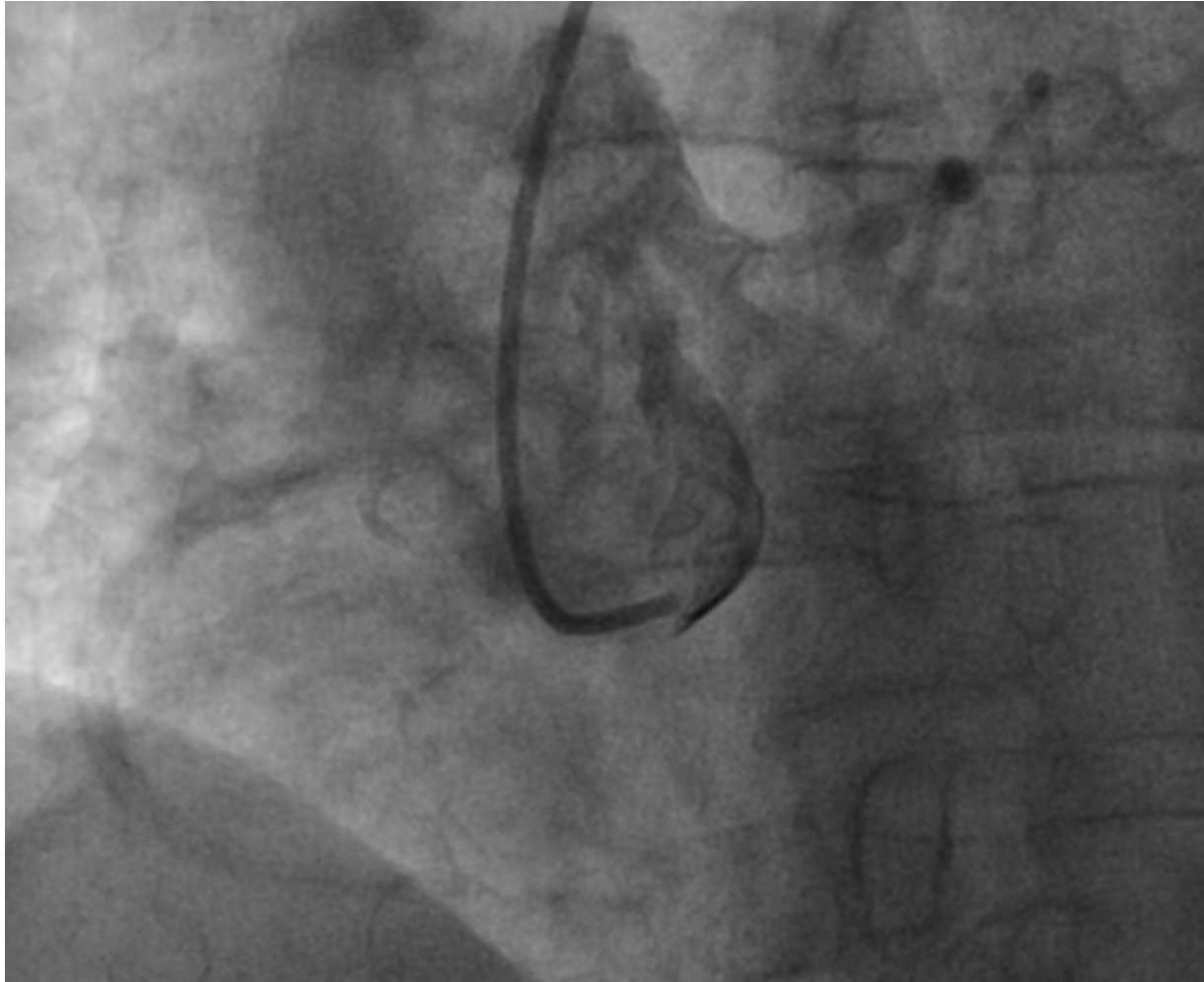
Pierre Aubry pour le groupe ANOCOR
Département de Cardiologie
Centre Hospitalier Universitaire BICHAT
Paris

10 juin 2015

lien d'intérêt à déclarer

Anomalies de connexion des artères coronaires (ANOCOR)

Cathétérisme difficile de la coronaire droite



Anomalies de connexion des artères coronaires (ANOCOR)

COHORTE ANOCOR (n = 472 patients)

- 70 cardiologues interventionnels
- recrutement : 01/2010 - 01/2013
- stratégie thérapeutique vis-à-vis de l' ANOCOR
- suivi clinique prévu à 5 ans

coordination



financement

GACI

Groupe Athérome et Cardiologie Interventionnelle
de la Société Française de Cardiologie





Angiographic data

Types of coronary artery

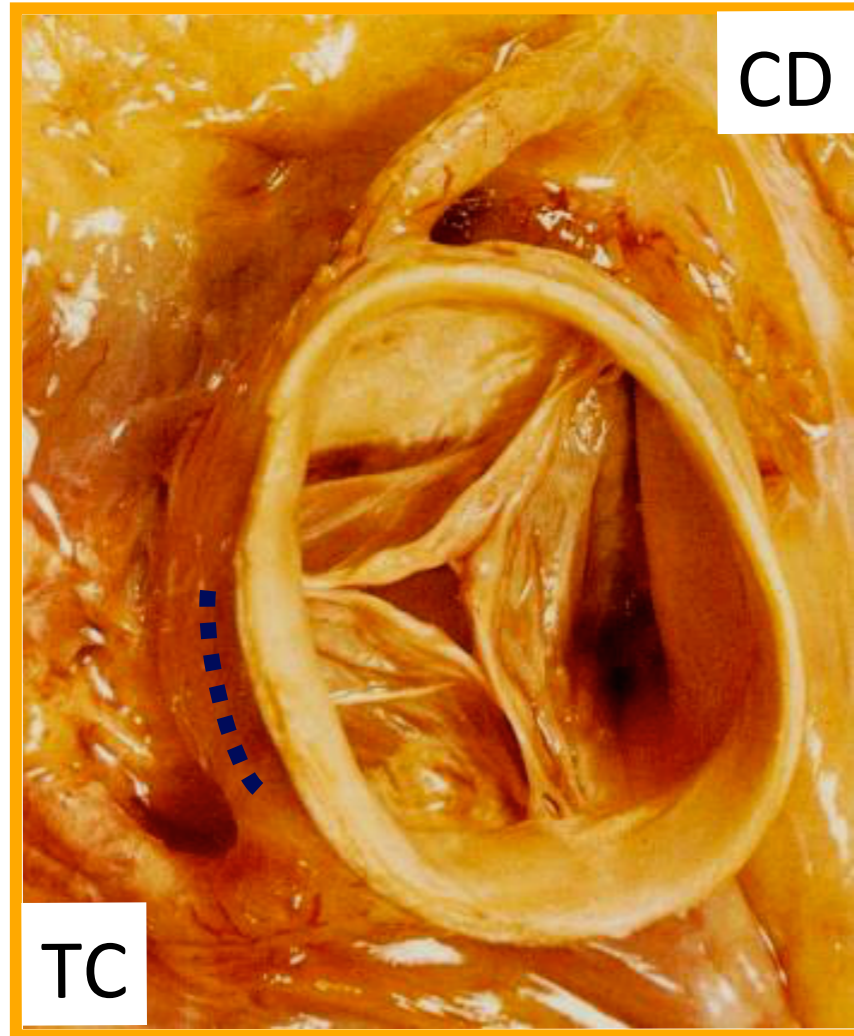
(n = 496)

Left main coronary artery, n (%)	60 (12.1)
LAD coronary artery, n (%)	27 (5.4)
Circumflex coronary artery, n (%)	236 (47.5)
Right coronary artery, n (%)	165 (33.2)
Other arteries, n (%)	9 (1.8)

LAD: left anterior descending

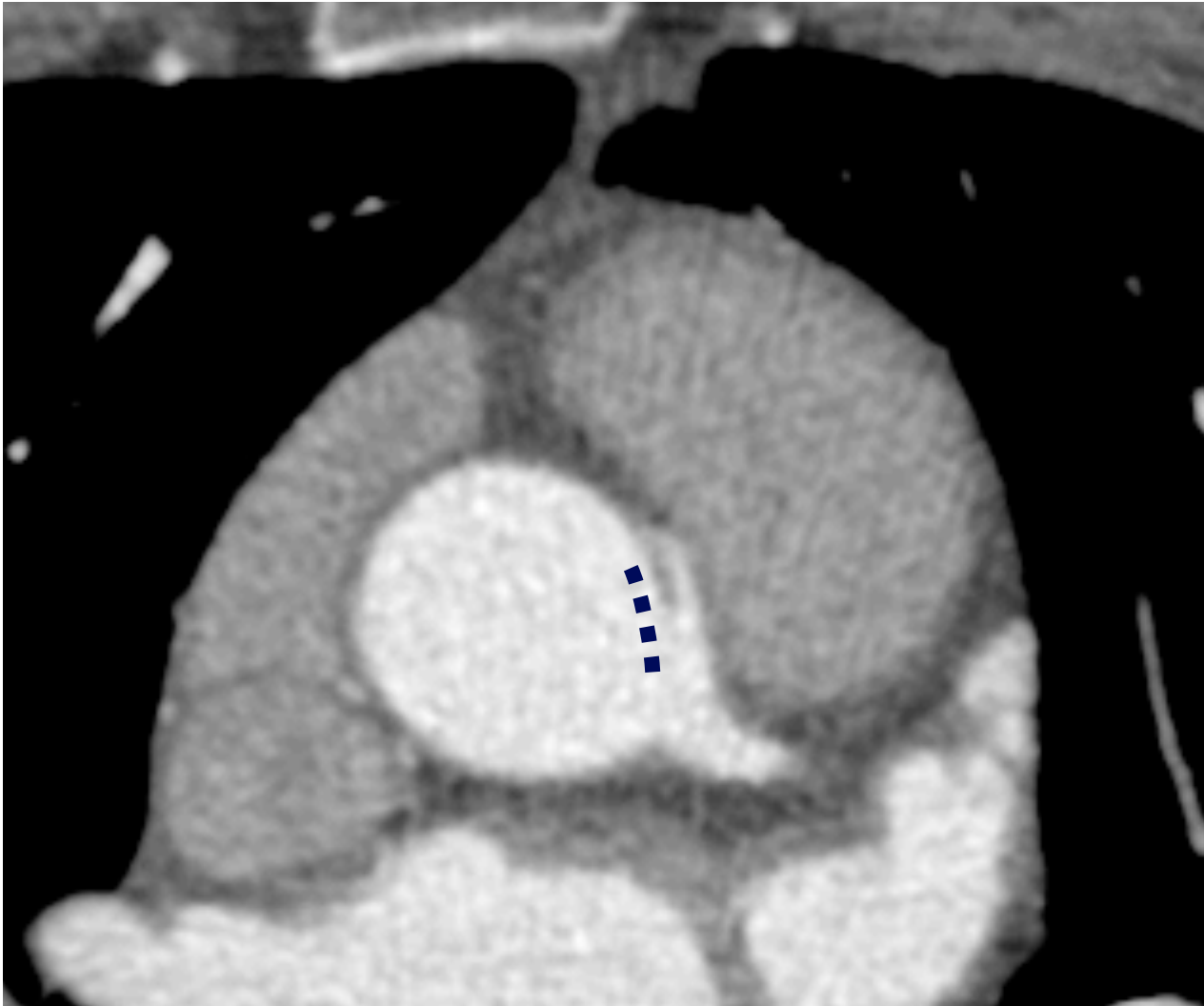
Anomalies de connexion des artères coronaires (ANOCOR)

Zone de connexion habituelle (ANOCOR droite)

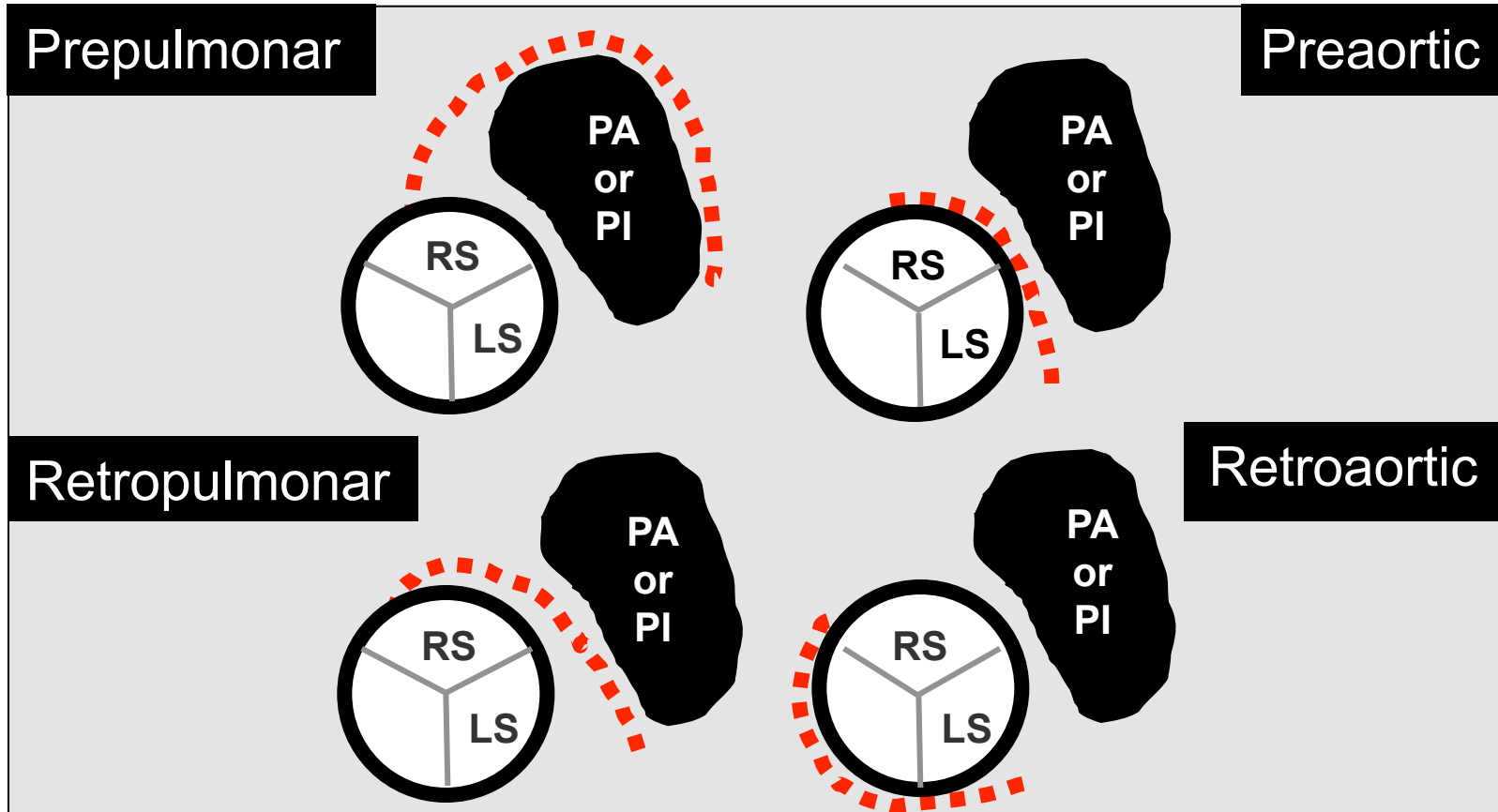


Anomalies de connexion des artères coronaires (ANOCOR)

Zone de connexion habituelle (ANOCOR droite)



Types of course



PA: pulmonary artery, PI : pulmonary infundibulum
 LS: left sinus, RS: right sinus



Angiographic data

Preaortic course

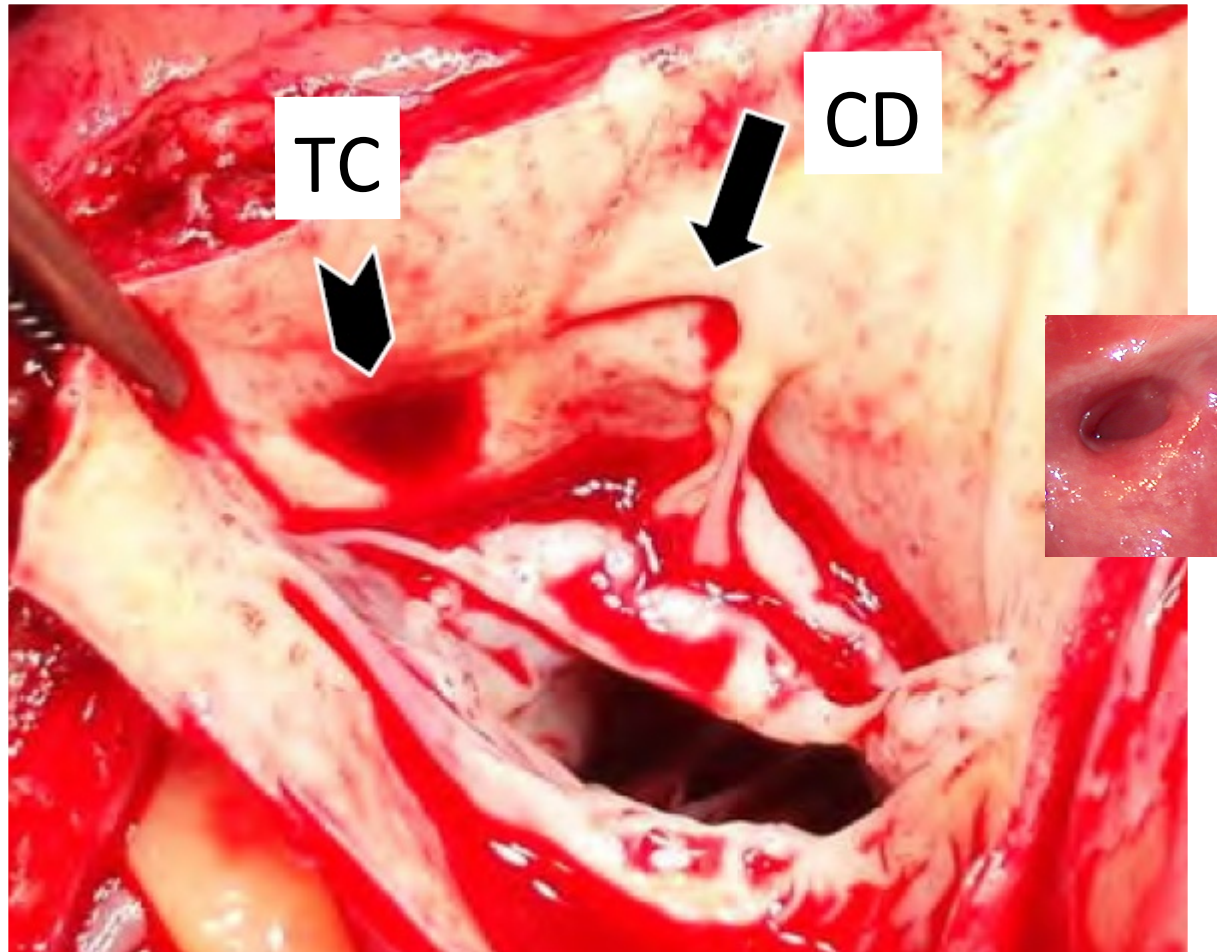
(n = 155/496)

Left main or LAD coronary artery, n (%)	5 (5.7)
Circumflex coronary artery, n (%)	0
Right coronary artery, n (%)	148 (89.7)

LAD: left anterior descending

Anomalies de connexion des artères coronaires (ANOCOR)

Difficultés de cathéterisme anomalies avec connexion intramurale

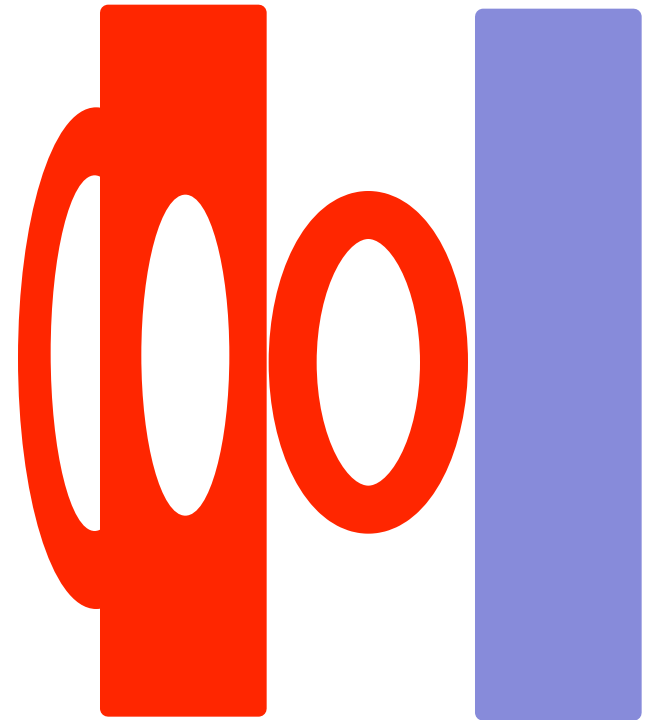


Anomalies de connexion des artères coronaires (ANOCOR)

connexion
extramurale



connexion
intramurale



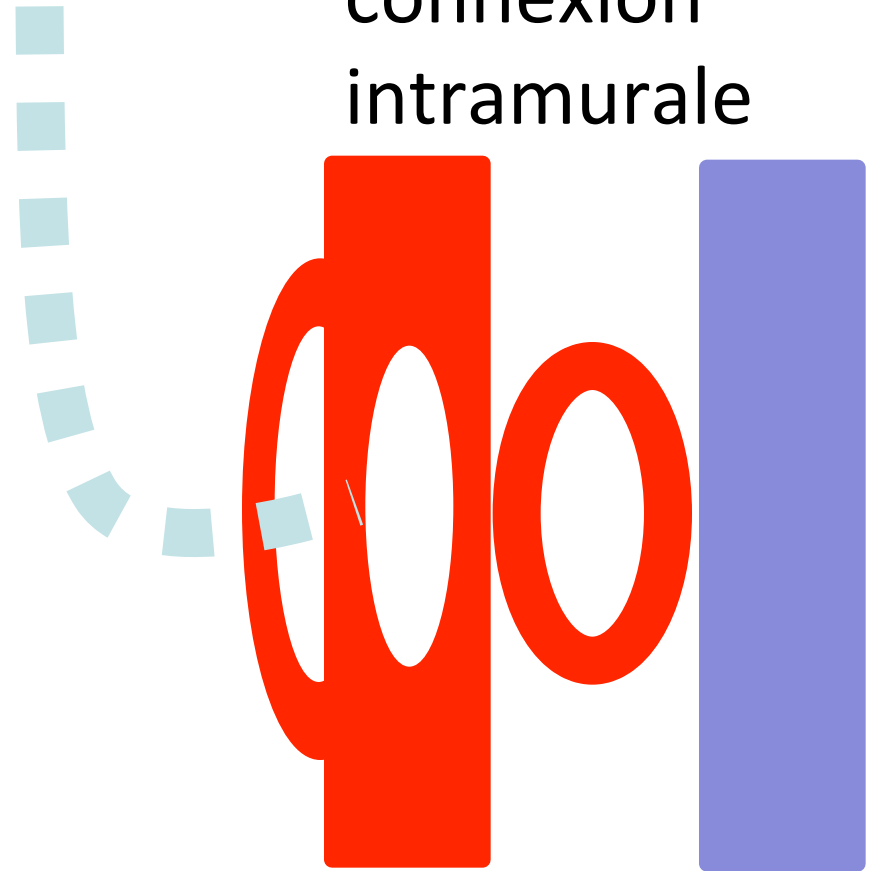
Anomalies de connexion des artères coronaires (ANOCOR)

connexion
extramurale



cannulation possible

connexion
intramurale



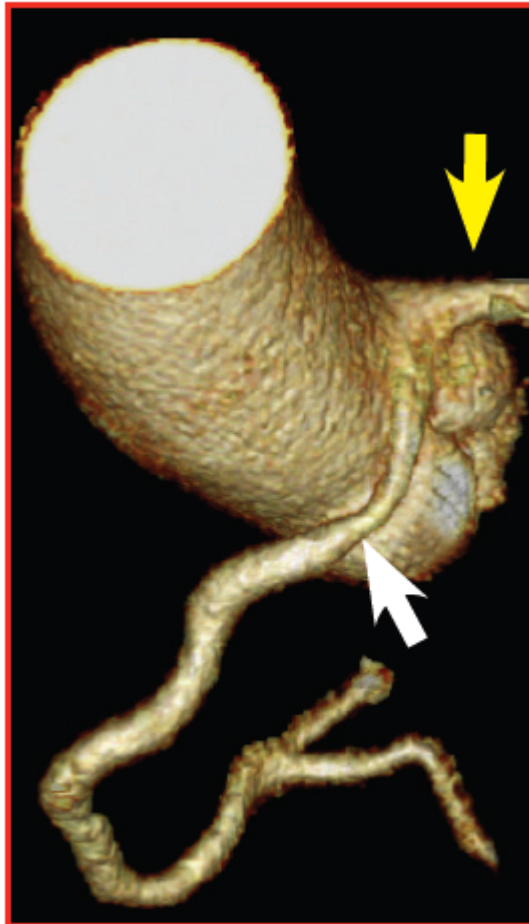
cannulation difficile

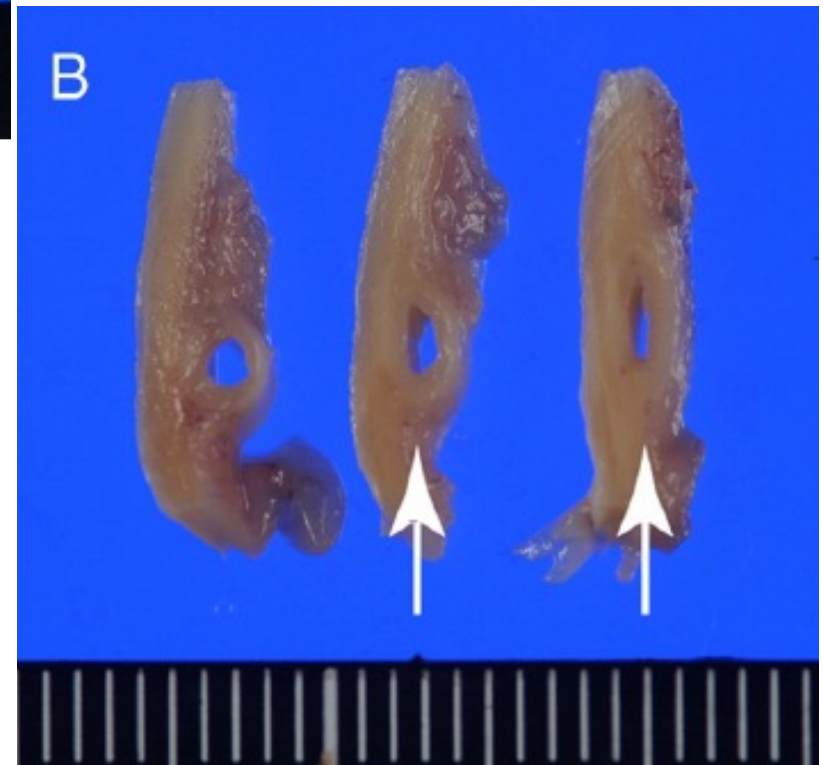
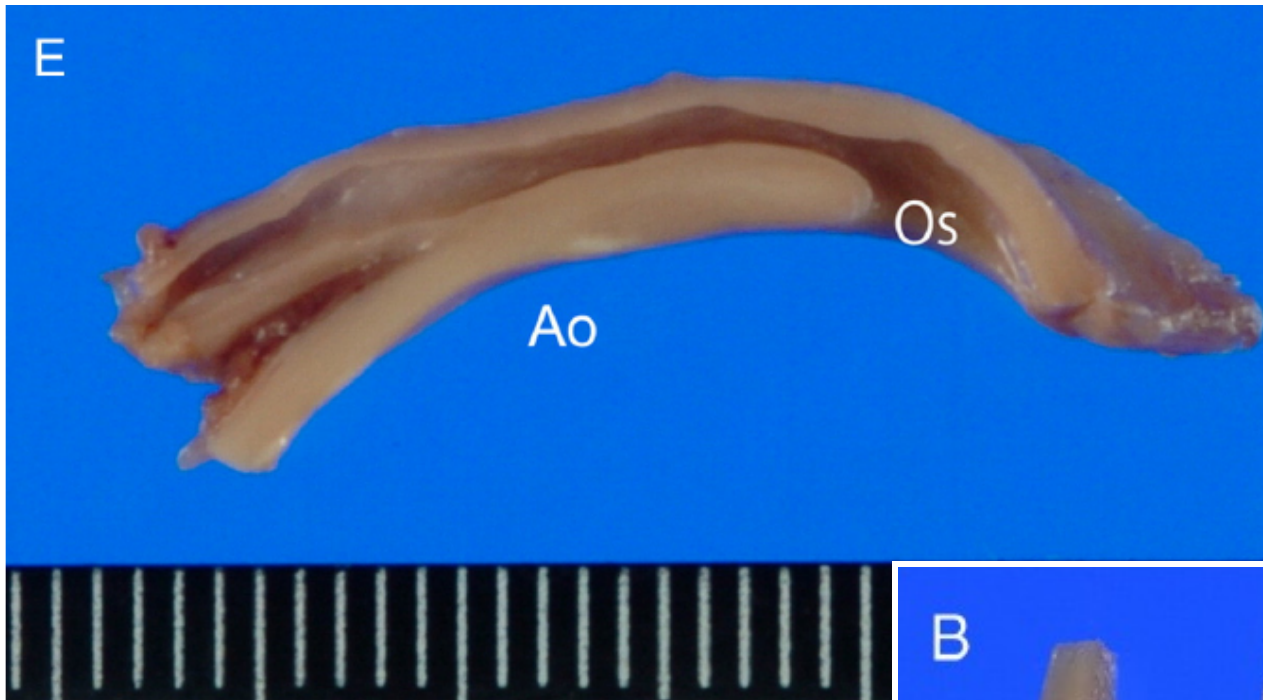
Anomalies de connexion des artères coronaires (ANOCOR)

Compression artérielle
Adaptation artérielle

Anomalies de connexion des artères coronaires (ANOCOR)

ANOCOR droite avec trajet pré aortique

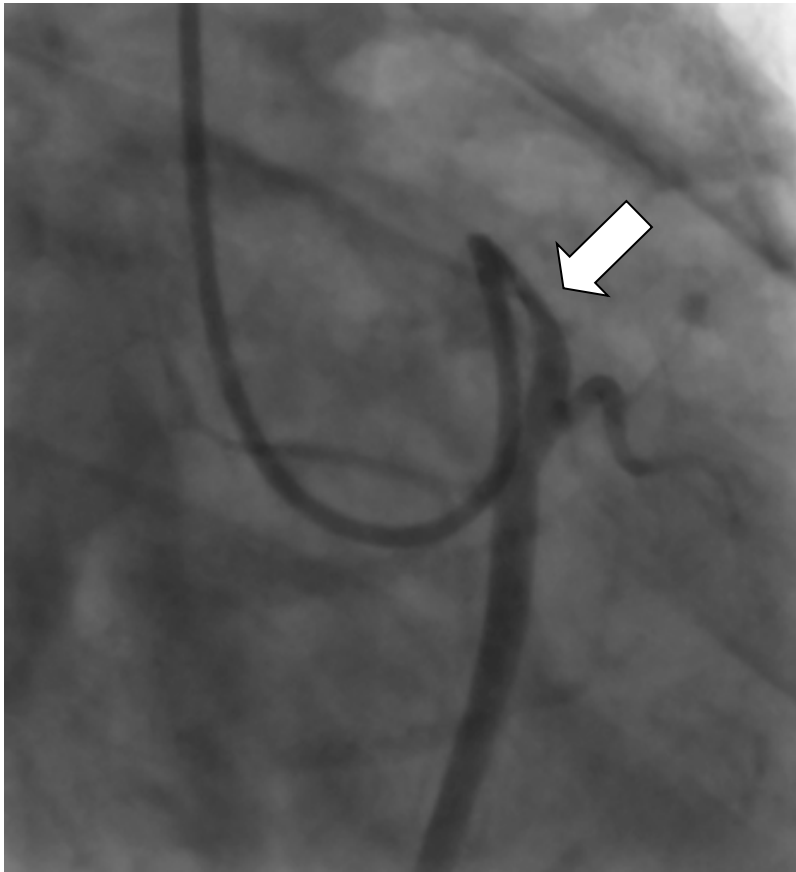




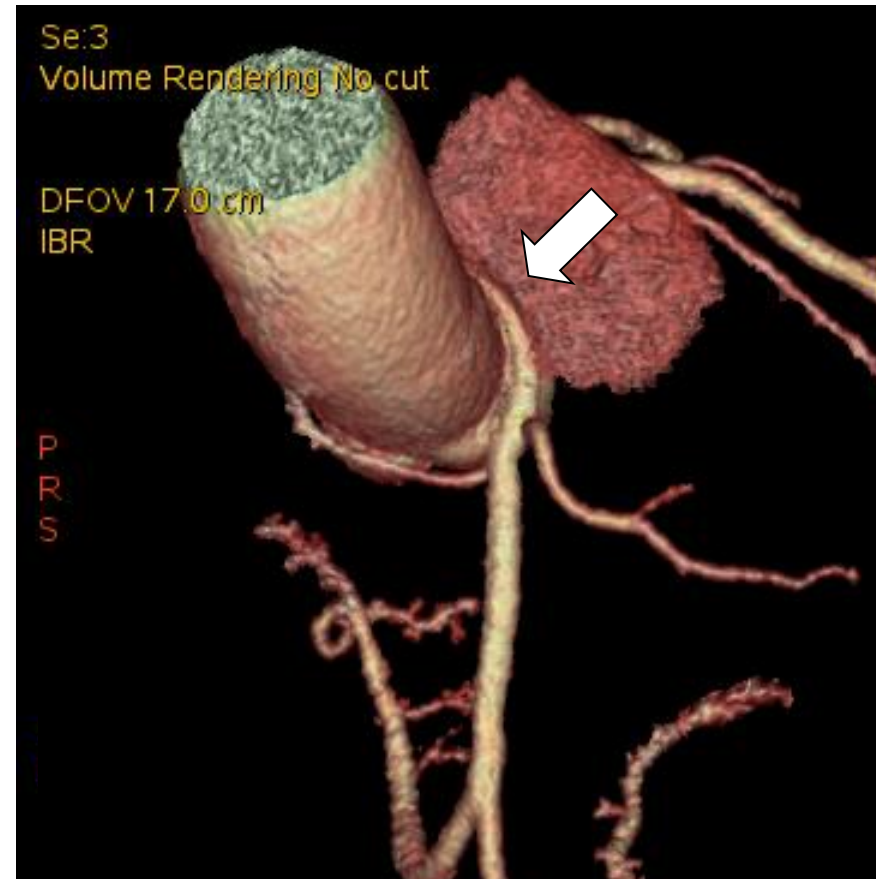
Right ANOCOR with an intramural course
Hata Y et al.
Cardiovasc Pathol 2014

Anomalies de connexion des artères coronaires (ANOCOR)

Coronarographie
OAD $\geq 30^\circ$

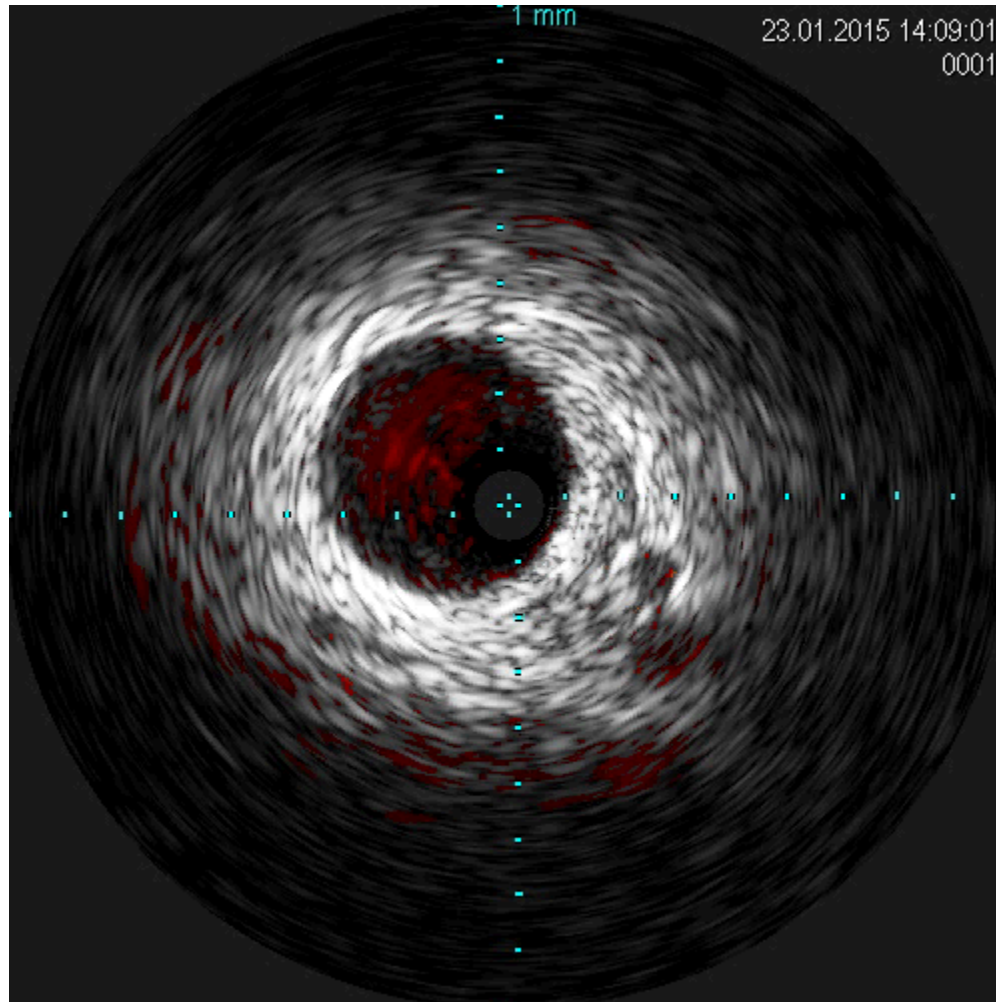


Scanner coronaire
volumique



Anomalies de connexion des artères coronaires (ANOCOR)

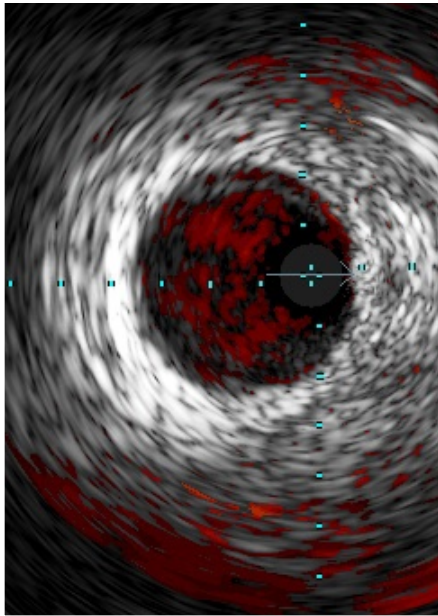
Echographie endocoronaire



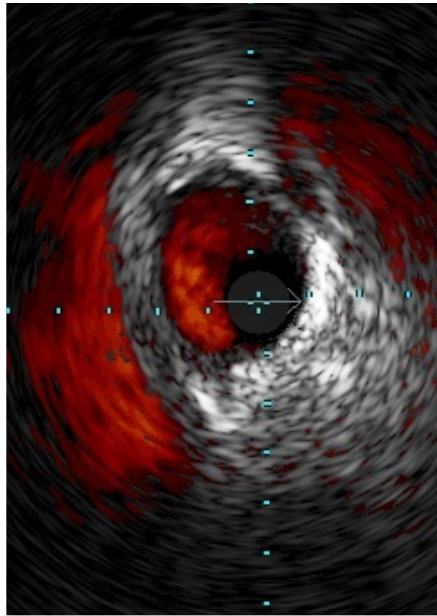
Anomalies de connexion des artères coronaires (ANOCOR)

Echographie endocoronaire

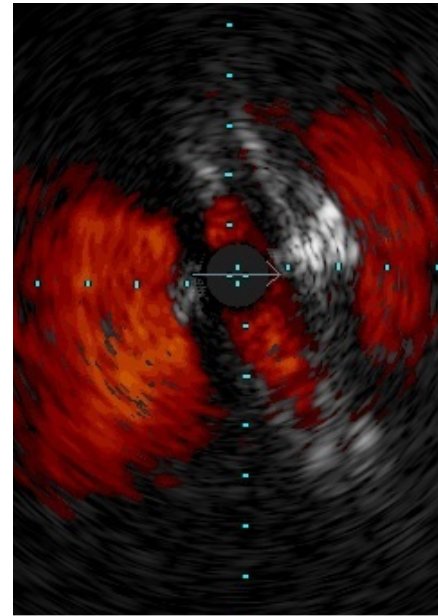
extramural



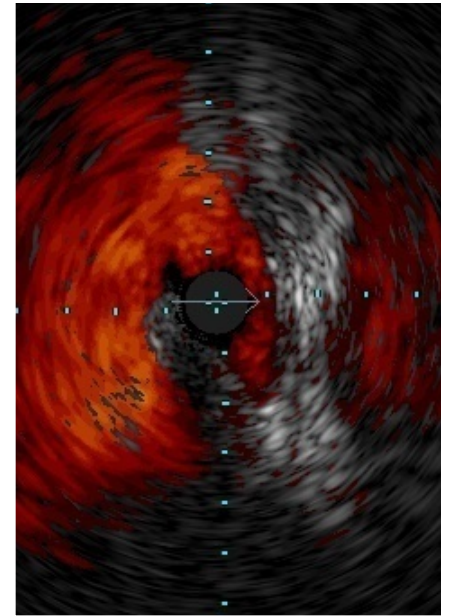
juxtamural



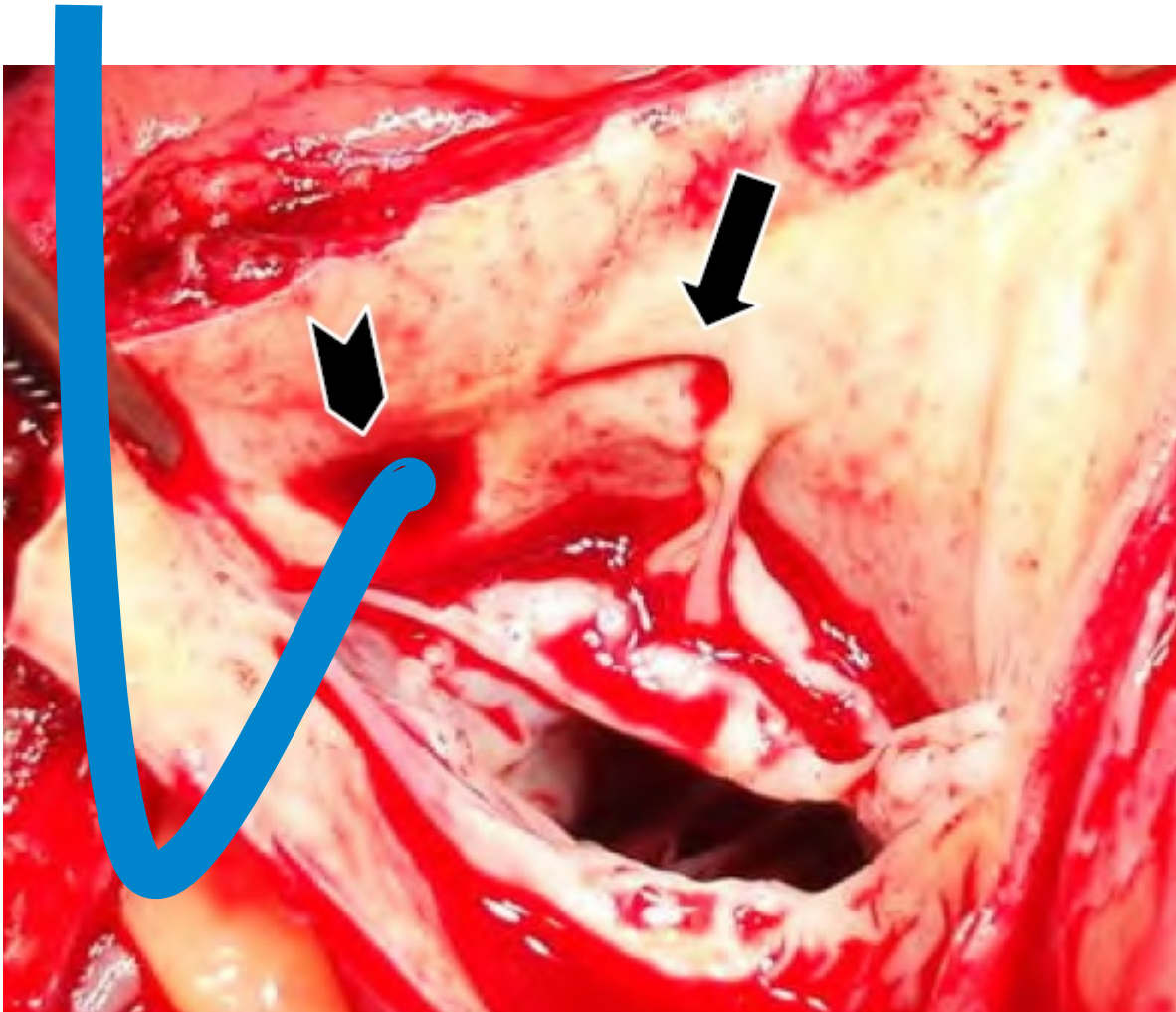
intramural



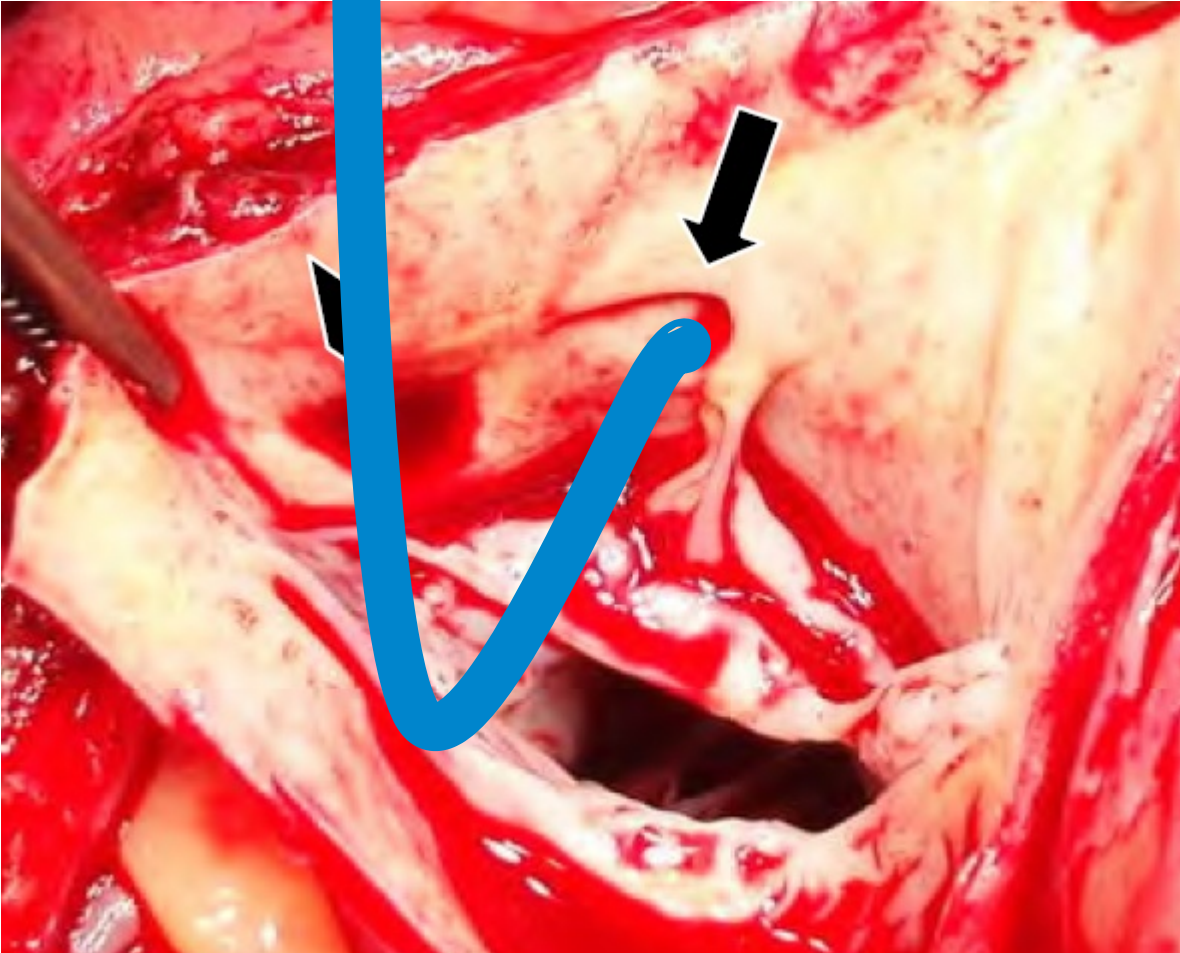
ostium



Anomalies de connexion des artères coronaires (ANOCOR)



Anomalies de connexion des artères coronaires (ANOCOR)



Anomalous connections of the coronary arteries

Catherization of anomalous connection of a right coronary artery connected with the left coronary sinus

My technique

(in case of inadequate opacification with usual technique)

1. Left anterior oblique 30° projection
2. Use of 6F guiding catheters
3. Use of Amplatz Left or Extra Back-Up catheters
4. Cannulation of the left ostium
5. Push the catheter gently to extubate from the ostium
6. Torque the catheter slowly and clockwise
7. Tip of the catheter may arrive facing the ectopic ostium
8. Opacification of the ectopic coronary artery
9. Rapid insertion of a 0.014 wire (better opacification, IVUS, PCI)

Anomalous connections of the coronary arteries

Catherization of anomalous connection of a right coronary artery connected with the left coronary sinus

My technique

(in case of failure of adequate opacification with usual technique)

1. Left anterior oblique 30° projection
2. Use of 6F guiding catheters
3. Use of Amplatz Left or Extra Back-Up catheters
4. Cannulation of the left ostium
5. Push the catheter gently to extubate from the ostium
6. Torque the catheter slowly and clockwise
7. Tip of the catheter may arrive facing the ectopic ostium
8. Opacification of the ectopic coronary artery
9. Rapid insertion of a 0.014 wire (better opacification, IVUS, PCI)

Anomalous connections of the coronary arteries

Catherization of anomalous connection of a right coronary artery connected with the left coronary sinus

My technique

(in case of failure of adequate opacification with usual technique)

1. Left anterior oblique 30° projection
2. Use of 6F guiding catheters
3. Use of Amplatz Left or Extra Back-Up catheters
4. Cannulation of the left ostium
5. Push the catheter gently to extubate from the ostium
6. Torque the catheter slowly and clockwise
7. Tip of the catheter may arrive facing the ectopic ostium
8. Opacification of the ectopic coronary artery
9. Rapid insertion of a 0.014 wire (better opacification, IVUS, PCI)

Anomalous connections of the coronary arteries

Catherization of anomalous connection of a right coronary artery connected with the left coronary sinus

My technique

(in case of failure of adequate opacification with usual technique)

1. Left anterior oblique 30° projection
2. Use of 6F guiding catheters
3. Use of Amplatz Left or Extra Back-Up catheters
4. Cannulation of the left ostium
5. Push the catheter gently to extubate from the ostium
6. Torque the catheter slowly and clockwise
7. Tip of the catheter may arrive facing the ectopic ostium
8. Opacification of the ectopic coronary artery
9. Rapid insertion of a 0.014 wire (better opacification, IVUS, PCI)

Anomalous connections of the coronary arteries

Catherization of anomalous connection of a right coronary artery connected with the left coronary sinus

My technique

(in case of failure of adequate opacification with usual technique)

1. Left anterior oblique 30° projection
2. Use of 6F guiding catheters
3. Use of Amplatz Left or Extra Back-Up catheters
4. Cannulation of the left ostium
5. Push the catheter gently to extubate from the ostium
6. Torque the catheter slowly and clockwise
7. Tip of the catheter may arrive facing the ectopic ostium
8. Opacification of the ectopic coronary artery
9. Rapid insertion of a 0.014 wire (better opacification, IVUS, PCI)

Anomalous connections of the coronary arteries

Catherization of anomalous connection of a right coronary artery connected with the left coronary sinus

My technique

(in case of failure of adequate opacification with usual technique)

1. Left anterior oblique 30° projection
2. Use of 6F guiding catheters
3. Use of Amplatz Left or Extra Back-Up catheters
4. Cannulation of the left ostium
5. Push the catheter gently to extubate from the ostium
6. Torque the catheter slowly and clockwise
7. Tip of the catheter may arrive facing the ectopic ostium
8. Opacification of the ectopic coronary artery
9. Rapid insertion of a 0.014 wire (better opacification, IVUS, PCI)

Anomalous connections of the coronary arteries

Catherization of anomalous connection of a right coronary artery connected with the left coronary sinus

My technique

(in case of failure of adequate opacification with usual technique)

1. Left anterior oblique 30° projection
2. Use of 6F guiding catheters
3. Use of Amplatz Left or Extra Back-Up catheters
4. Cannulation of the left ostium
5. Push the catheter gently to extubate from the ostium
6. Torque the catheter slowly and clockwise
7. Tip of the catheter may arrive facing the ectopic ostium
8. Opacification of the ectopic coronary artery
9. Rapid insertion of a 0.014 wire (better opacification, IVUS, PCI)

Anomalous connections of the coronary arteries

Catherization of anomalous connection of a right coronary artery connected with the left coronary sinus

My technique

(in case of failure of adequate opacification with usual technique)

1. Left anterior oblique 30° projection
2. Use of 6F guiding catheters
3. Use of Amplatz Left or Extra Back-Up catheters
4. Cannulation of the left ostium
5. Push the catheter gently to extubate from the ostium
6. Torque the catheter slowly and clockwise
7. Tip of the catheter may arrive facing the ectopic ostium
8. Opacification of the ectopic coronary artery
9. Rapid insertion of a 0.014 wire (better opacification, IVUS, PCI)

Anomalous connections of the coronary arteries

Catherization of anomalous connection of a right coronary artery connected with the left coronary sinus

My technique

(in case of failure of adequate opacification with usual technique)

1. Left anterior oblique 30° projection
2. Use of 6F guiding catheters
3. Use of Amplatz Left or Extra Back-Up catheters
4. Cannulation of the left ostium
5. Push the catheter gently to extubate from the ostium
6. Torque the catheter slowly and clockwise
7. Tip of the catheter may arrive facing the ectopic ostium
8. Opacification of the ectopic coronary artery
9. Rapid insertion of a 0.014 wire (better opacification, IVUS, PCI)

Angiographic committee

- Patrick Dupouy
- Jean-Michel Juliard
- Jean-Pierre Laissy
- Phalla Ou

Steering committee

- Pierre Aubry
- Candice Estellat
- Reza Farnoud
- Xavier Halna du Fretay